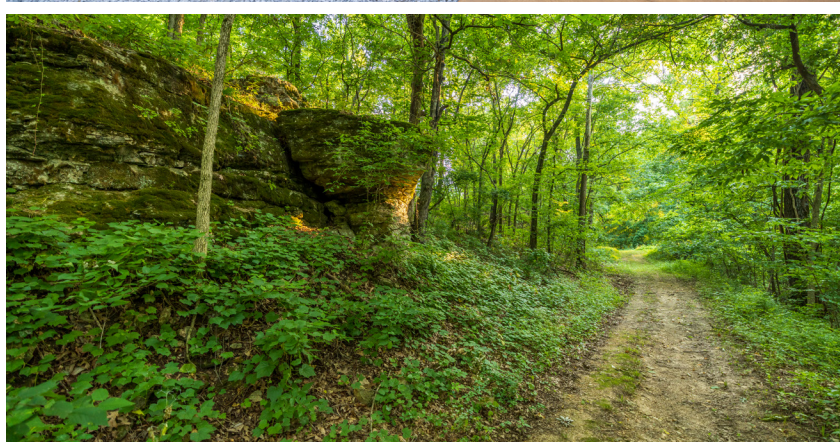


MIDWEST LAND GROUP PRESENTS



JASPER COUNTY, MO

32 ACRES



MidwestLandGroup.com

MIDWEST LAND GROUP IS HONORED TO PRESENT

CUSTOM BUILT HOME ON 32 ACRES WITH EXCLUSIVE CENTER CREEK FRONTAGE

Welcome to your dream home in the highly sought-after community of Briar Brook, where luxury meets country living! This stunning 3-bedroom, 3-bathroom residence spans approximately 3,882 finished square feet and is situated on 32 +/- acres of amazing recreational land, featuring exclusive Center Creek frontage. The property offers high-end convenient living as you are within a 2-minute golf cart ride of Briar Brook Golf Course and all the town's amenities.

Step inside to discover a meticulously maintained, spacious, and inviting interior, highlighted by a large 3-season porch, tall ceilings, and an open concept with hardwood and solid surface flooring that extends throughout the home. You'll quickly notice the care and warmth this home exuberates as you explore its layout amplified by the expansive windows that provide breathtaking views of the surrounding land and creek bottom. The kitchen, dining, and living room blend well together in an open-concept arrangement. The master bedroom is a true retreat, boasting a generous closet space and a large, luxurious bathroom.

The basement is fully equipped for comfort and functionality, featuring heated flooring, a second utility room, a large safe room with an electric locked steel door, a John Deere room, and a second kitchen area complete with a separate HVAC system and entrance. Additionally, the basement houses a large bathroom with a walk-in shower and substantial closet space—

perfect for family member visits or entertaining!

Car enthusiasts and storage lovers will appreciate the oversized 3-car garage complete with a tool room, dog cubby, and heated floors! The property also features a nice outdoor area with a fire pit, a huge covered front porch, lovely landscaping, and a large basement patio perfect for entertaining.

Practical amenities include lots of well-thought-out storage throughout the home, a front porch closet, a tool closet in the garage, plenty of outlets inside and out, great exterior lighting, thoughtful design, and a long driveway. The home also offers good attic storage space with easy access, and an underground dog fence with over an acre to roam. There are also trails leading down to the creek that give you easy access to the acreage and creek! Center Creek flows year-round and provides the owners with fantastic small-mouth bass fishing or just a place for quiet relaxation. The land also offers excellent hunting as the creek creates a natural funnel for deer and turkeys, the seller's hunting success is easily identifiable by the wall mounts within the home.

This remarkable property combines elegant living spaces with extensive outdoor amenities, making it a rare find in Briar Brook. Don't miss the opportunity to make this exceptional home your own. Contact us today to schedule a viewing!

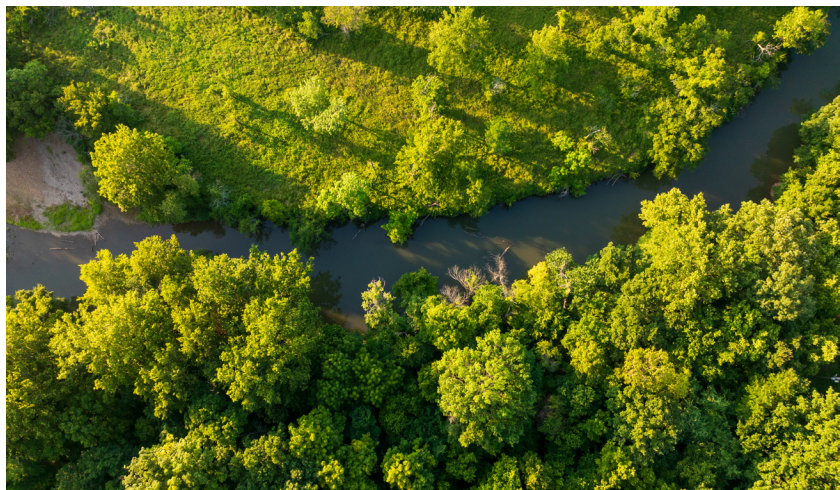
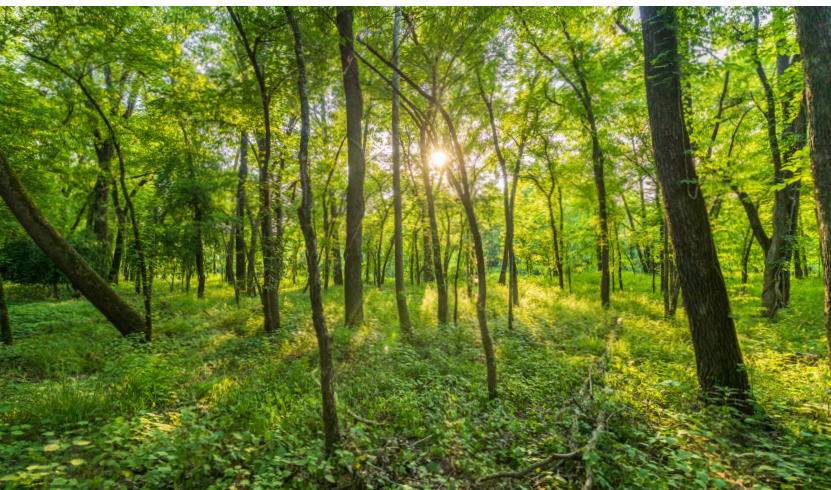
PROPERTY FEATURES

PRICE: **\$899,000** | COUNTY: **JASPER** | STATE: **MISSOURI** | ACRES: **32**

- Acreage
- Waterfront
- New home
- Custom built
- Golf course
- Lots of extras
- Heated concrete floors
- Access to hunting and fishing
- Convenient
- Mature timber
- Well maintained
- One owner



ACREAGE



NEW HOME

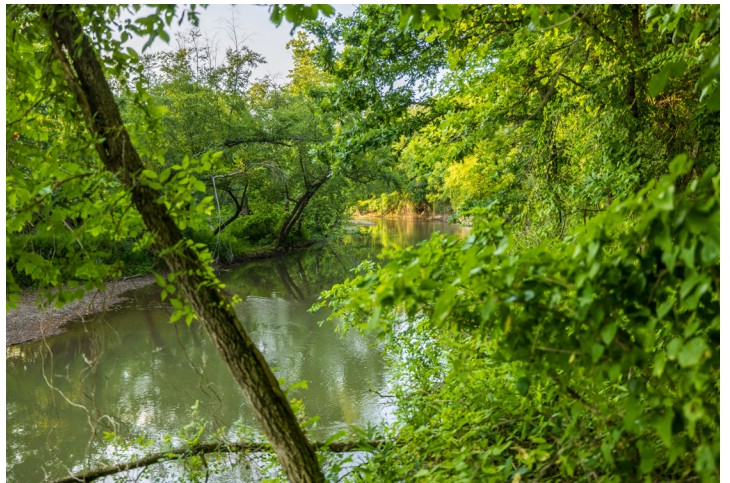
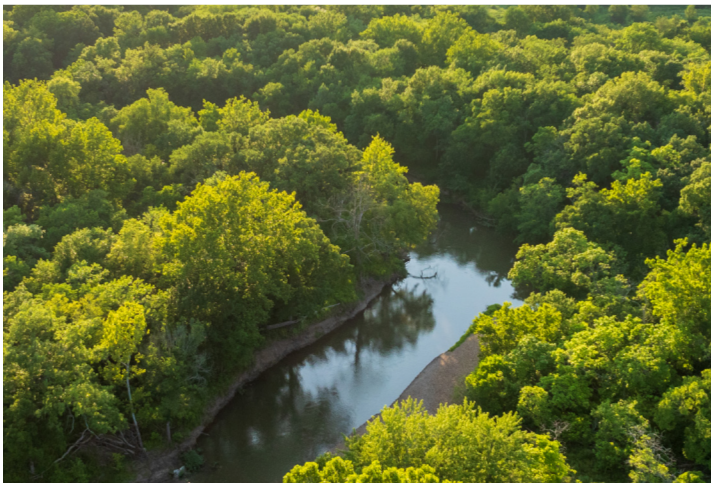
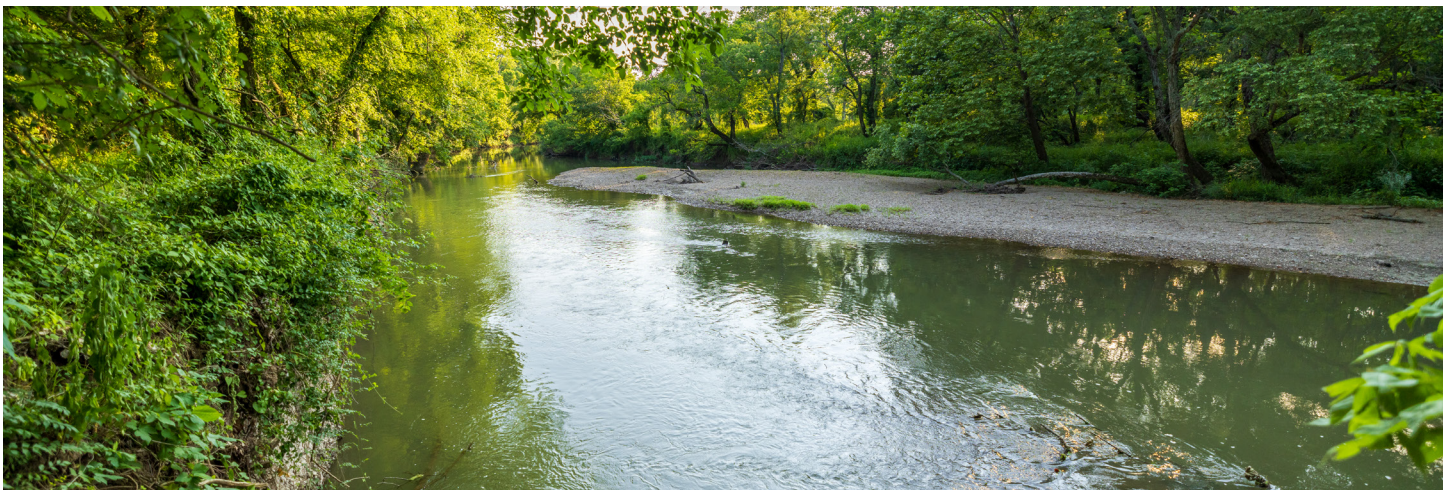
This stunning 3-bedroom, 3-bathroom residence spans approximately 3,882 finished square feet.



WELL MAINTAINED



WATERFRONT



ADDITIONAL PHOTOS



AERIAL MAP



©2024 AgriData, Inc.

Boundary Center: 37° 9' 51.68, -94° 33' 2.24

0ft 425ft 850ft



Maps Provided By:



© AgriData, Inc. 2023

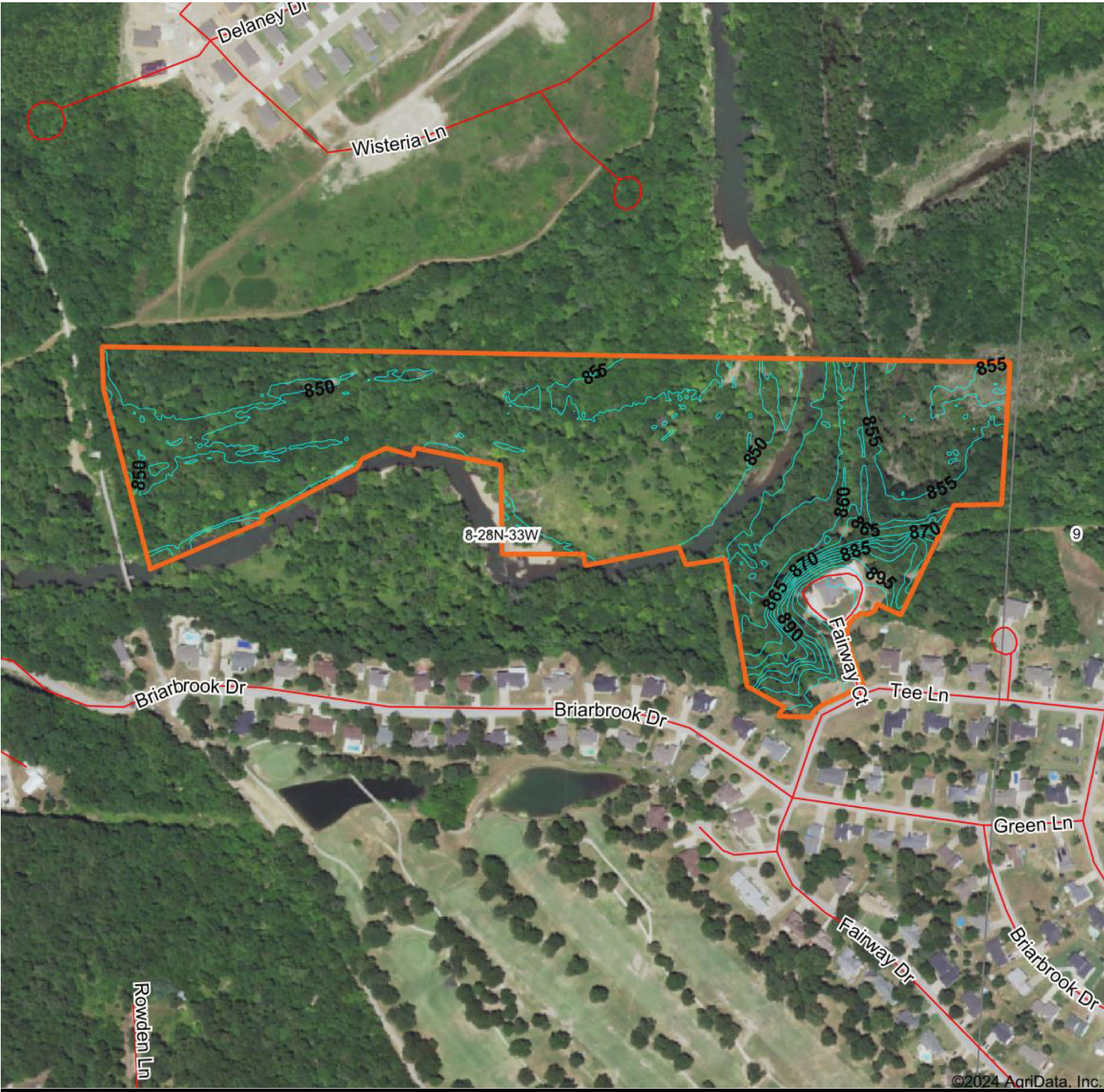
www.AgridataInc.com

8-28N-33W
Jasper County
Missouri



6/21/2024

TOPOGRAPHY MAP



Maps Provided By:



© AgriData, Inc. 2023 www.AgriDataInc.com

Source: USGS 1 meter dem
Interval(ft): 5.0
Min: 842.8
Max: 909.8
Range: 67.0
Average: 857.2
Standard Deviation: 13.09 ft

0ft 458ft 917ft

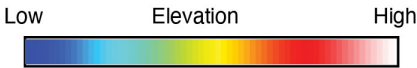
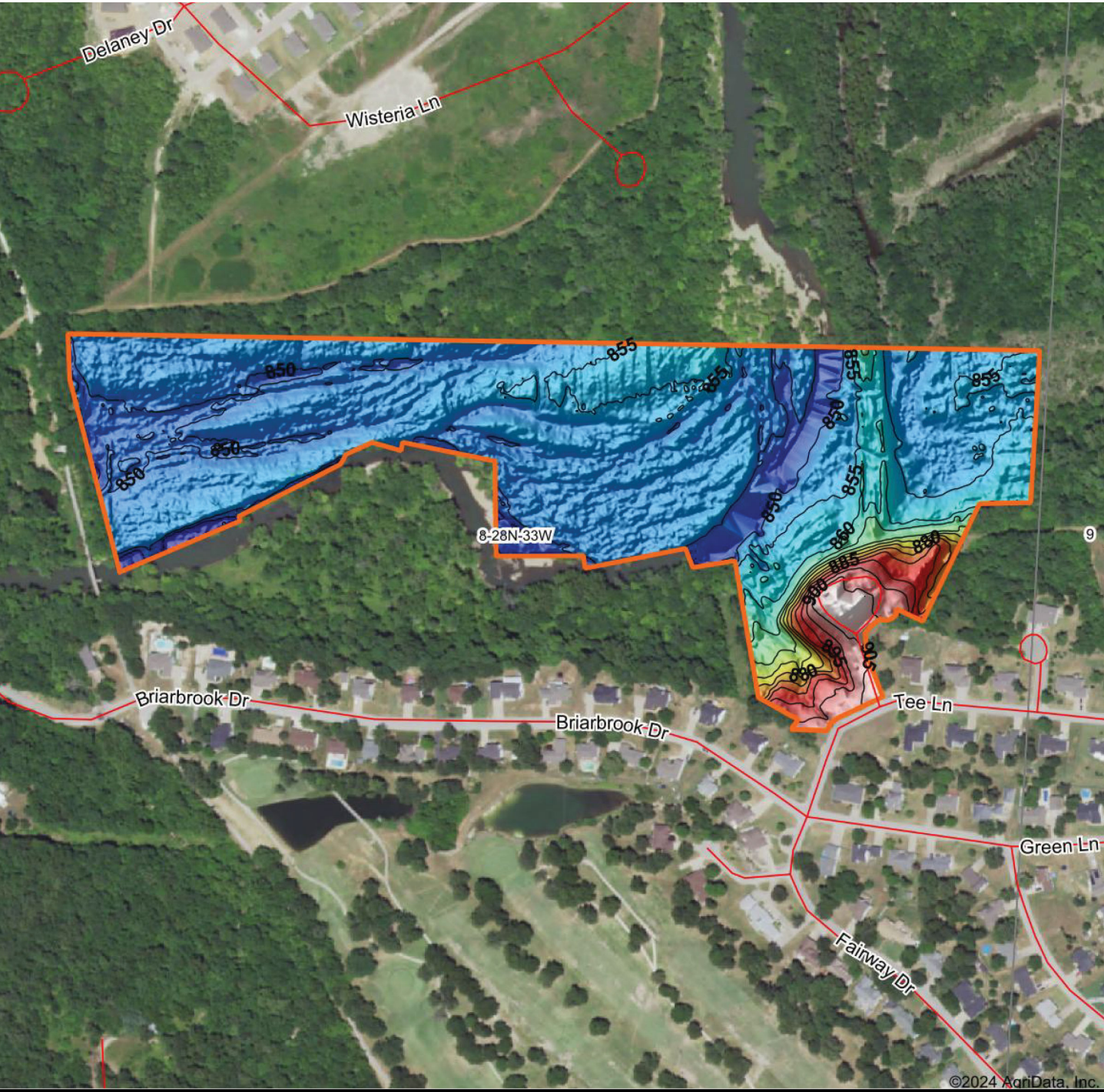


6/21/2024

8-28N-33W
Jasper County
Missouri

Boundary Center: 37° 9' 51.68, -94° 33' 2.24

HILLSHADE MAP



Maps Provided By:



© AgriData, Inc. 2023 www.AgriDataInc.com

Source: USGS 1 meter dem

Interval(ft): 5

Min: 842.8

Max: 909.8

Range: 67.0

Average: 857.2

Standard Deviation: 13.09 ft

0ft 428ft 856ft

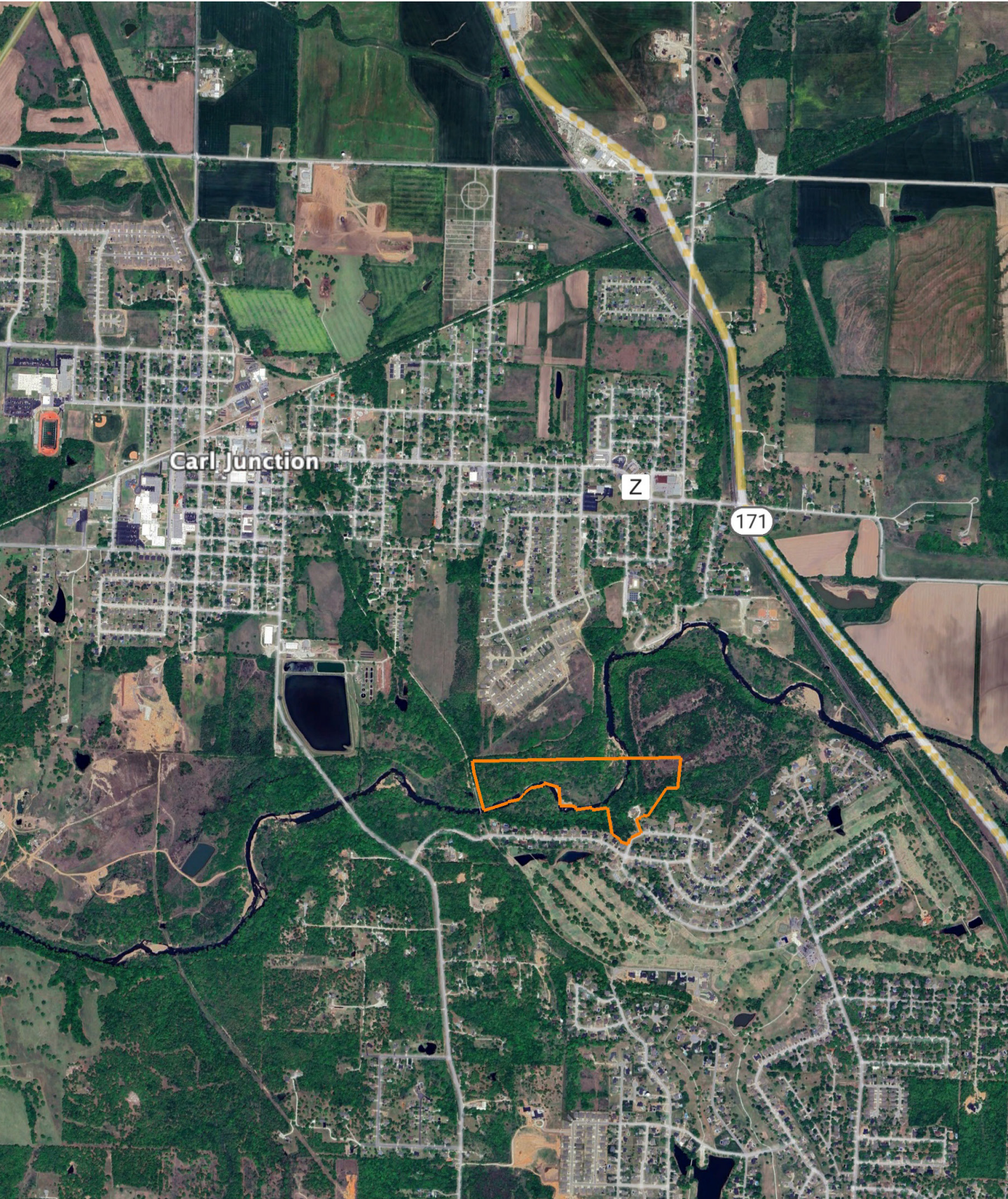


6/21/2024

8-28N-33W
Jasper County
Missouri

Boundary Center: 37° 9' 51.68, -94° 33' 2.24

OVERVIEW MAP



AGENT CONTACT

Looking for land or selling a piece of property can be stressful or overbearing, but not if you're working with the right agent. Bjorn Wilkerson is all about making sure each client has an enjoyable experience from start to finish. A lifelong lover of the outdoors, Bjorn has a background in agriculture and a passion for all things outdoors. This includes hunting, fishing, camping, traveling, hiking, and land management, not to mention his personal favorites: spring turkey hunting, whitetail hunting, and bowfishing. Born in West Plains, Missouri, Bjorn attended Couch High School and graduated from Missouri State University—Springfield with a degree in Wildlife Management. Before coming to Midwest Land Group, he worked in agriculture and operations with Archer Daniels Midland (ADM), a human and animal nutrition company specializing in agricultural origination and processing, where he worked his way around the company, serving in a variety of positions, everything from trainee, plant manager, and recruiter to new manager development specialist and continuous improvement practitioner. Being a service to someone looking for hunting or farming property is what drives Bjorn. He wants each experience to not only be enjoyable, but seamless as well. If you're in the market to sell or buy land, give Bjorn a call.



BJORN WILKERSON,
LAND AGENT

417.233.1243

BWilkerson@MidwestLandGroup.com



MidwestLandGroup.com

This property is being offered by Midwest Land Group, LLC. 913.674.8010. All information provided by Midwest Land Group, LLC or their agents was acquired from sources deemed accurate and reliable, however we do not warrant its accuracy or completeness. Midwest Land Group, LLC assumes no liability for error, omission or investment results. Midwest Land Group, LLC. Licensed in Arkansas, Illinois, Iowa, Kansas, Minnesota, Missouri, Nebraska, Oklahoma, South Dakota, Texas, Wisconsin, and Wyoming.