

MIDWEST LAND GROUP PRESENTS

38.5 ACRES IN

---

# CANADIAN COUNTY OKLAHOMA



[MidwestLandGroup.com](http://MidwestLandGroup.com)

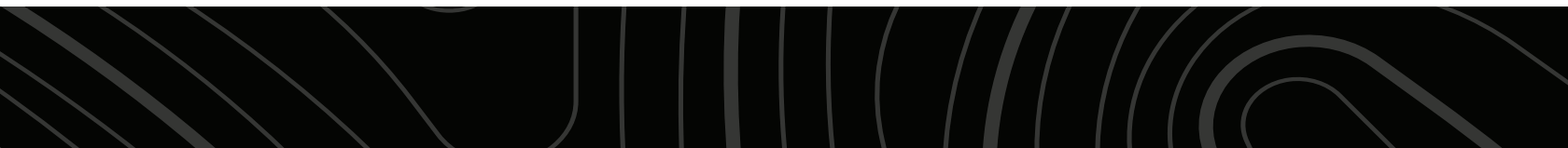
MIDWEST LAND GROUP IS HONORED TO PRESENT

# 38.5 +/- ACRE MULTI-USE PROPERTY IN EL RENO, OKLAHOMA

---

Located on S Alfadale Road and just ¼ mile north of Route 66 is an excellent 38.5 +/- acre tract that can suit a variety of needs. The gently rolling landscape offers a multitude of build sites for either a personal residence, small hobby farm, or potential development opportunities. This property is in the El Reno city limits and allows for quick access to Route 66 and I-40. The location of this tract offers all the amenities of living in

“town” while also giving you that “country” feel with the wide-open spaces. Whether you’re looking for the ideal place to build your future home or a place to start a small livestock operation, these 38.5 +/- acres deserve attention. Please contact Blake Bechtel at (580) 363-6870 to find out more about this versatile investment opportunity. An additional 38.5 +/- acres are also for sale that adjoins this property to the north.





# PROPERTY FEATURES

PRICE: **\$317,000** | COUNTY: **CANADIAN** | STATE: **OKLAHOMA** | ACRES: **38.5**

---

- 38.5 +/- acres
- Development potential
- Paved road frontage
- Utilities available
- In El Reno city limits
- Multiple build sites
- Gently rolling land
- Beautiful views
- Ideal location
- Will suit various needs
- Located ¼ mile north of Route 66





38.5 +/- ACRES

---





# MULTIPLE BUILD SITES

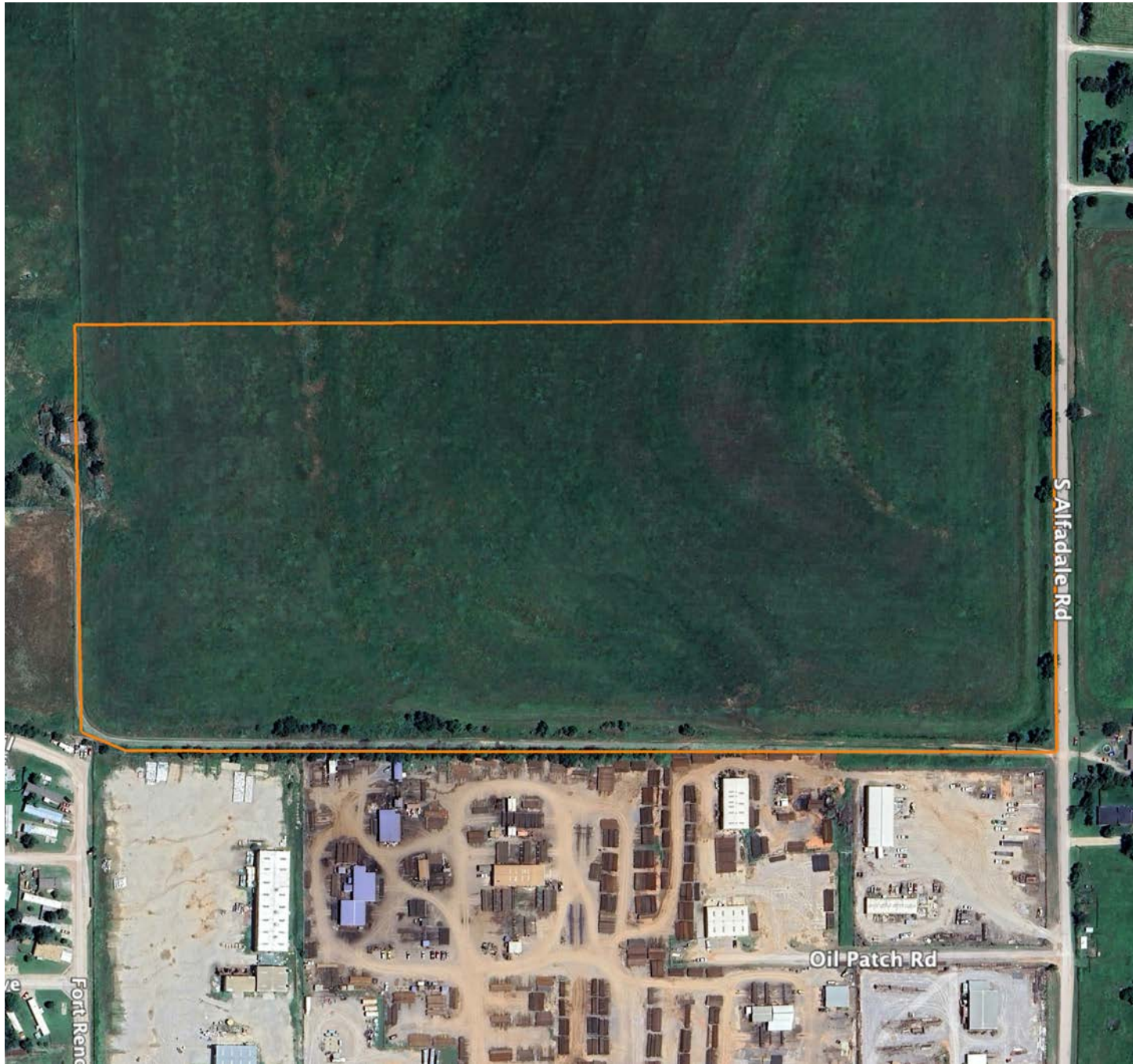
---





# AERIAL MAP

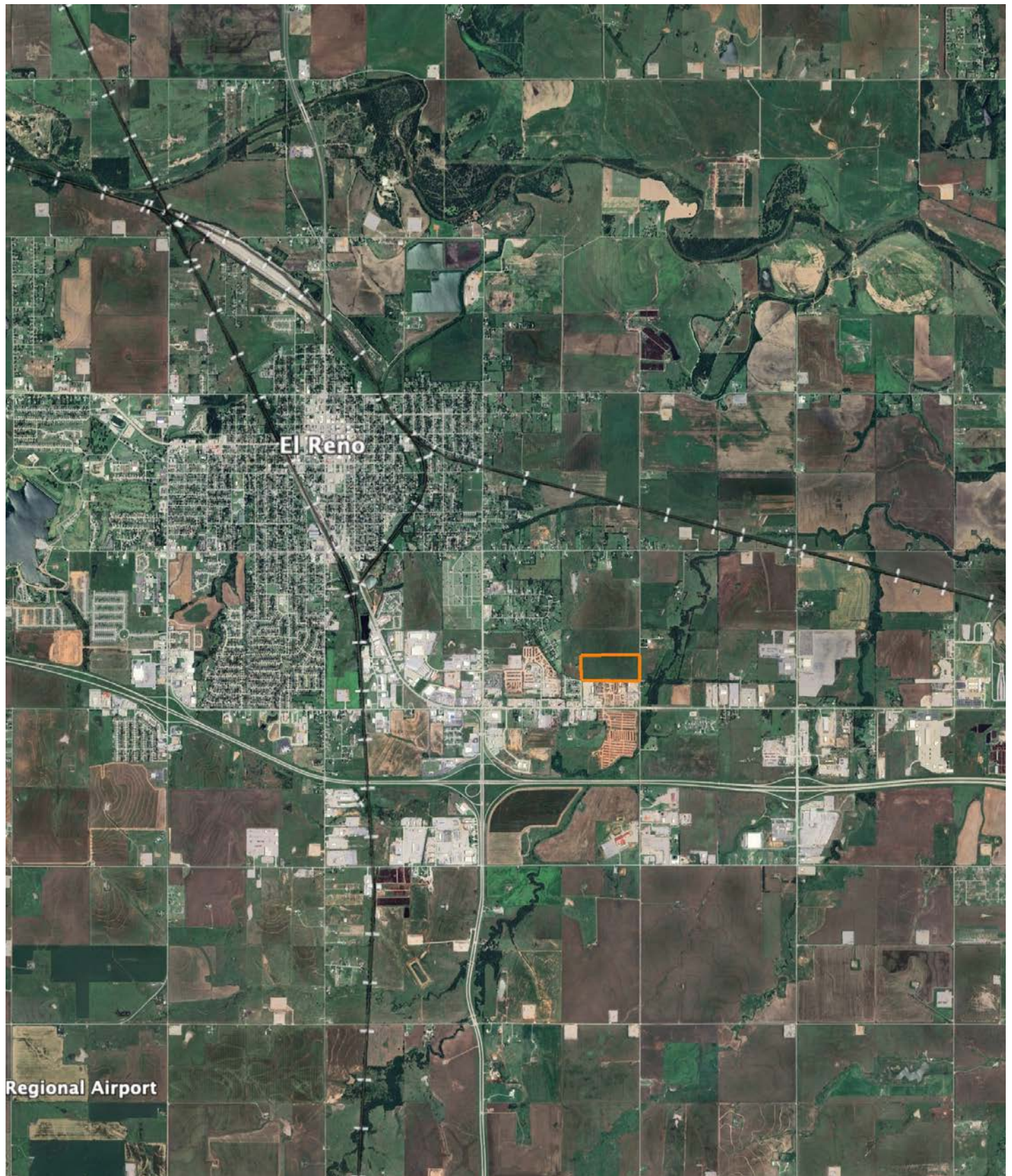
---





# OVERVIEW MAP

---





# AGENT CONTACT

Born and raised in north central Oklahoma, Blake Bechtel has always had a passion for agriculture and the outdoors. Growing up, Blake spent his summers working on a family friend's row crop farm and worked year-round tending to his own livestock projects through 4H and FFA. After graduating from Blackwell High School, Blake went on to study business administration at Oklahoma State University, where he was a member of the Alpha Gamma Rho fraternity. While in college, he not only met his wife, Natalie, he also met lifelong friends that ignited his passion for learning and understanding the art of hunting trophy whitetails.

After college, Blake moved to Edmond, Oklahoma, where he began his career in the oil and gas industry. Having spent the majority of his career providing services to oil and gas producers, he understands the importance of client relationships and is focused on always doing what's best for his customer. Today, Blake still resides in Edmond with his wife and four daughters Kyler, Tegan, Ainsley and Berkley. He serves as an ambassador for the Folds of Honor Oklahoma City Chapter, coaches little league soccer, and enjoys hunting and playing golf. Having a well-rounded background in agriculture and hunting properties, coupled with his experiences in the oil and gas industry, Blake understands the importance and value of land transactions and is committed to serving his clients with the utmost care and commitment.



**BLAKE BECHTEL,**  
LAND AGENT

**580.363.6870**

BBechtel@MidwestLandGroup.com



## MidwestLandGroup.com

This property is being offered by Midwest Land Group, LLC. 913.674.8010. All information provided by Midwest Land Group, LLC or their agents was acquired from sources deemed accurate and reliable, however we do not warrant its accuracy or completeness. Midwest Land Group, LLC assumes no liability for error, omission or investment results. Midwest Land Group, LLC. Licensed in Arkansas, Illinois, Iowa, Kansas, Minnesota, Missouri, Nebraska, Oklahoma, South Dakota, Texas, and Wisconsin.