

MIDWEST LAND GROUP PRESENTS

.5 ACRES IN

DALLAS COUNTY MISSOURI

LOT 9 WICKER STREET, BUFFALO, MO 65622



MidwestLandGroup.com

MIDWEST LAND GROUP IS HONORED TO PRESENT

WHISPERING LANES ESTATE BUILD LOT

Welcome to Whispering Lanes Estate, where tranquility meets upscale living. Nestled at the end of a peaceful cul-de-sac, this large lot offers the perfect canvas for your dream home. Mature trees at the front of the property make for a great view off your front porch. Bring your ideas, this lot would be perfect for an in-ground pool and fire pit for friends and family to enjoy.

Located near the Buffalo Middle School, lot 9 combines the best of both worlds- a high-end neighborhood and the peacefulness of rural living. There are restrictions in place to ensure subdivision integrity. Don't miss out on this exceptional opportunity to own land in a prime location - schedule a showing today and start envisioning the possibilities!



PROPERTY FEATURES

PRICE: **\$25,500** | COUNTY: **DALLAS** | STATE: **MISSOURI** | ACRES: **.5**

- Whispering Lanes Estate subdivision
- Quiet neighborhood
- Fiber internet available
- Near Buffalo Middle School
- 7 lots available
- First-time lots have been listed for sale
- Quick access to Highway 65
- Restrictions covenants
- 35 minute drive to Springfield



.5 ACRE BUILD LOT



AERIAL MAP



©2024 AgriData, Inc.

Boundary Center: 37° 37' 58.92, -93° 6' 6.72



35-34N-20W
Dallas County
Missouri



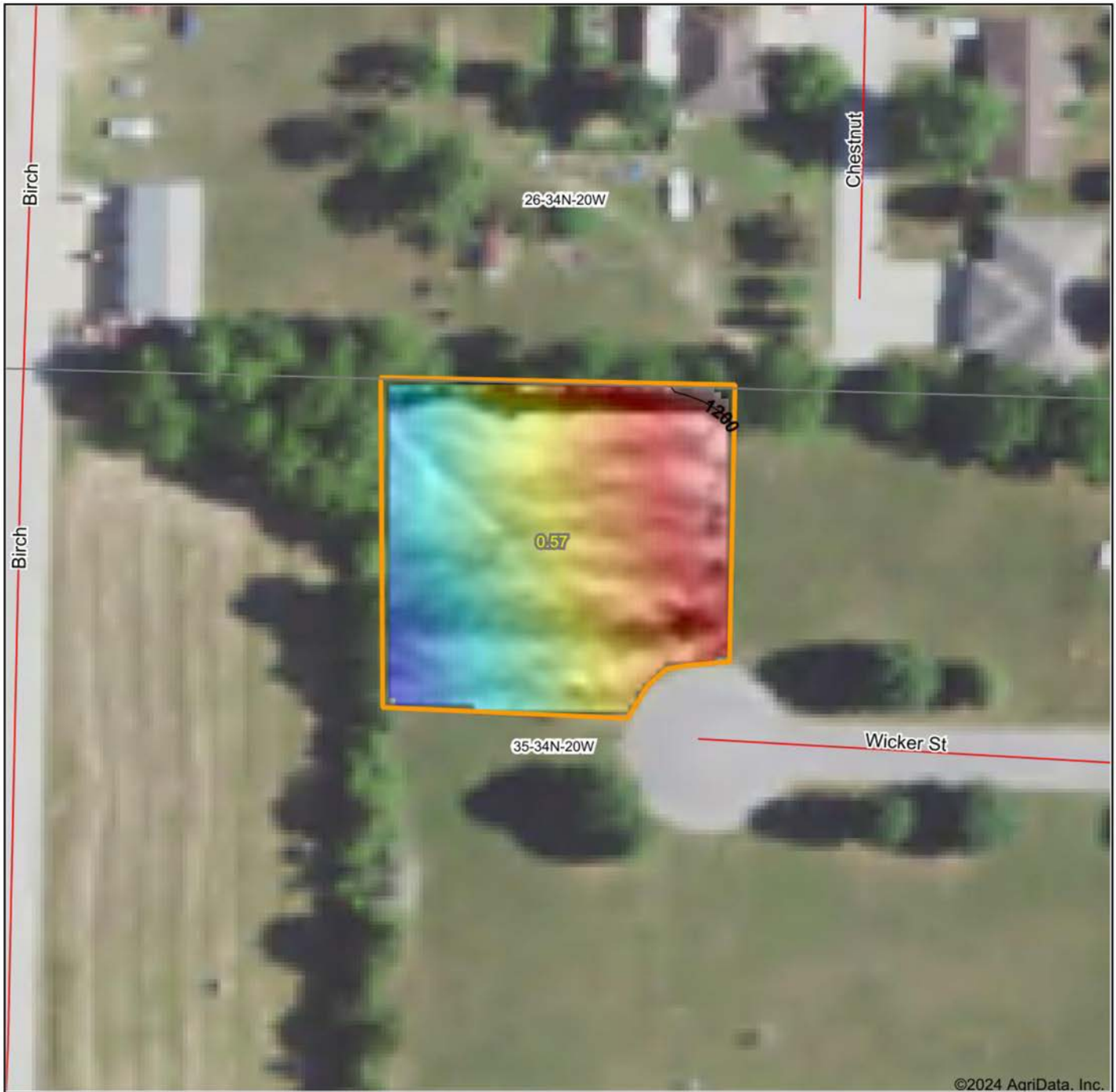
Maps Provided By:



© AgriData, Inc. 2023 www.AgriDataInc.com

5/18/2024

HILLSHADE MAP



©2024 AgriData, Inc.



Maps Provided By:
surety
CUSTOMIZED ONLINE MAPPING
© AgriData, Inc. 2023 www.AgriDataInc.com

Source: USGS 1 meter dem
Interval(ft): 10
Min: 1,192.3
Max: 1,200.8
Range: 8.5
Average: 1,196.5
Standard Deviation: 1.84 ft

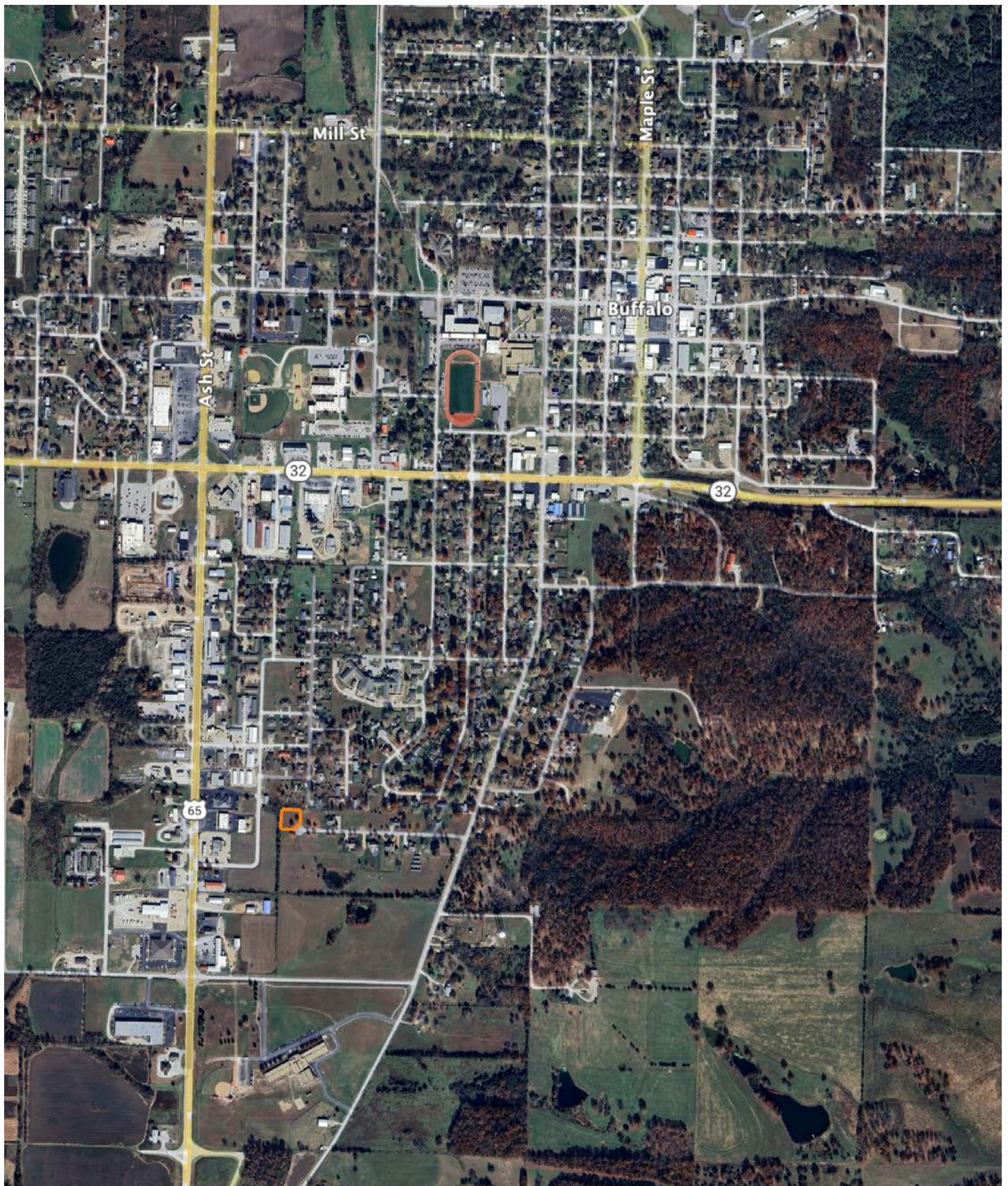


5/18/2024

35-34N-20W
Dallas County
Missouri

Boundary Center: 37° 37' 58.92, -93° 6' 6.72

OVERVIEW MAP



AGENT CONTACT

Amber Miller, a Missouri native, brings a wealth of experience and passion to Midwest Land Group. Hailing from Springfield and now residing in Long Lane, Missouri, with her husband Logan, and their sons, Case and Cole, Amber's roots run deep in the region she serves, particularly in Southwest Missouri. Her educational background in Agriculture Business from Missouri State University, coupled with a minor in Finance and Marketing, equips her with a solid foundation for navigating the complexities of real estate transactions.

With over 120 transactions closed since becoming a licensed REALTOR® in 2018, Amber has demonstrated her commitment to excellence in real estate. Amber's journey into land sales is deeply personal, rooted in her upbringing on a small farm in Dade County. From hunting to antique shopping and sourdough baking, she embodies the essence of rural living. Her active involvement in community organizations like Pisgah Baptist Church, Dallas County Elementary School PTO, and Buffalo Women's Professional Development group underscores her commitment to serving others beyond real estate transactions.

What sets Amber apart is her genuine passion for real estate and her unwavering dedication to her clients. Whether it's leveraging her deep understanding of land management or going the extra mile to exceed expectations, Amber's clients trust her to guide them through their land journey with integrity and expertise. With her husband Logan also on board at Midwest Land Group, the Millers offer a dynamic duo poised to deliver unparalleled service and results in land sales across Southwest Missouri.



AMBER MILLER

LAND AGENT

417.322.6995

AMiller@MidwestLandGroup.com



MidwestLandGroup.com

This property is being offered by Midwest Land Group, LLC. 913.674.8010. All information provided by Midwest Land Group, LLC or their agents was acquired from sources deemed accurate and reliable, however we do not warrant its accuracy or completeness. Midwest Land Group, LLC assumes no liability for error, omission or investment results. Midwest Land Group, LLC. Licensed in Arkansas, Illinois, Iowa, Kansas, Minnesota, Missouri, Nebraska, Oklahoma, South Dakota, Texas, and Wisconsin.