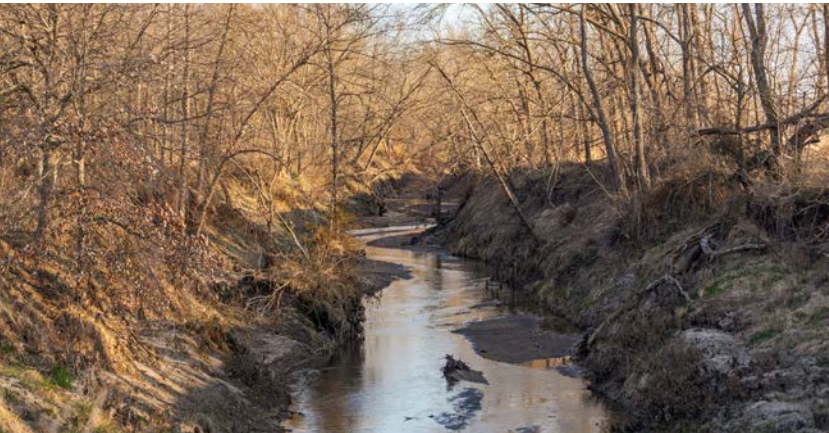


MIDWEST LAND GROUP PRESENTS



GRUNDY COUNTY, MO

371 ACRES



MidwestLandGroup.com

MIDWEST LAND GROUP IS HONORED TO PRESENT

RECREATION AND INCOME IN GRUNDY COUNTY

Just southeast of Princeton, Missouri, near the Mercer/Grundy County line, lies 371 +/- acres with so much potential for hunting and significant income. The farm has been left fallow since 2019. There are approximately 70 +/- acres of highly productive class II bottom-ground soils. There is very little cleanup needed on the bottoms to get them back into tillable shape. With Colo clay/loam soils sporting an NCCPI value of 94, and Vigar loam soils at 91, the productivity index is as good as it gets and promises exceptional crop yields. There are another 80 +/- acres of gently rolling hill ground, most of which has been terraced, that could also be easily put back into production. There is more small tree and brush cleanup that needs to be done here before this ground is viable for crops again, but the soil qualities are too good and the ground lays too well to allow it to continue to secede. Much of the cleanup could be handled with a bush hog, skid steers with a tree puller, and herbicide. Crop income on this farm should push \$30,000 per year or more. If deer sign and actual sightings suggest anything, this farm will provide an amazing hunting opportunity for new owners. In the two times I've toured and walked this farm I encountered 30-40 deer each

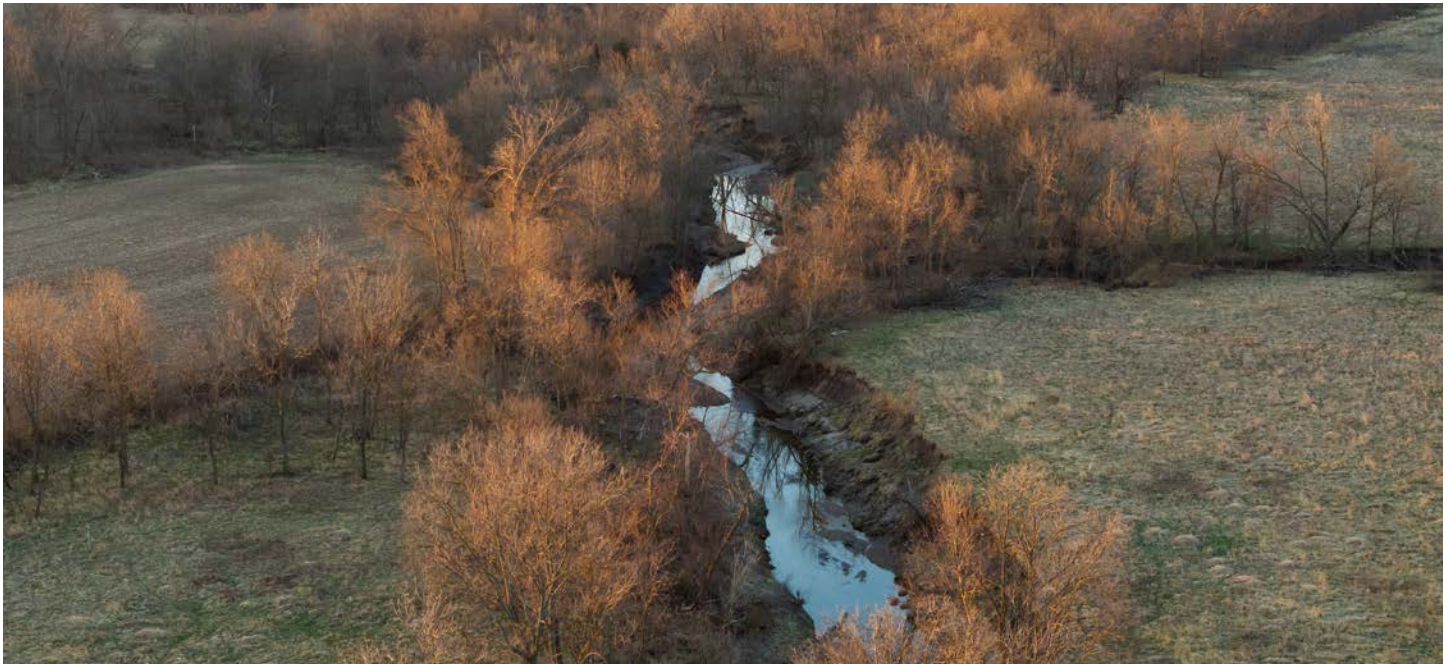
time. They were simply everywhere! There is outstanding bedding cover and habitat for whitetails here and this farm has holding power to keep them planted. Once crop food sources and a couple of well-positioned food plots are introduced again, this farm will be a consistent producer of trophy whitetails. Access to all parts of the farm is excellent to accommodate a stealthy approach to stands. West Honey Creek runs north/south through the eastern third of the property and it is completely lined with mature roost trees for turkeys. You can just picture a big Missouri tom pitching down off roost at daylight to strut for the ladies in the open bottoms. There are also 5 ponds on the farm. There are several potential build sites on the farm with outstanding views. Both rural water and electricity are available. Whether it be a cabin for a weekend retreat or putting down roots with a permanent residence you can enjoy the peace and solitude of the surrounding countryside while having the benefit of not seeing another neighbor! This farm presents a unique opportunity to merge an exceptional recreational experience with significant income. Please call David Brothers to schedule your tour at (660) 240-3243.



PROPERTY FEATURES

PRICE: **\$1,820,000** | COUNTY: **GRUNDY** | STATE: **MISSOURI** | ACRES: **371**

- 150-170 acres of tillable possible
- Exceptional bottom-ground soils
- High numbers of deer and turkey
- Trophy caliber deer
- Exceptional wildlife habitat
- 5 ponds
- Very good access
- Great Build Sites
- Views for miles
- Exceptional Privacy
- Utilities available at road



371 +/- ACRES



5 PONDS



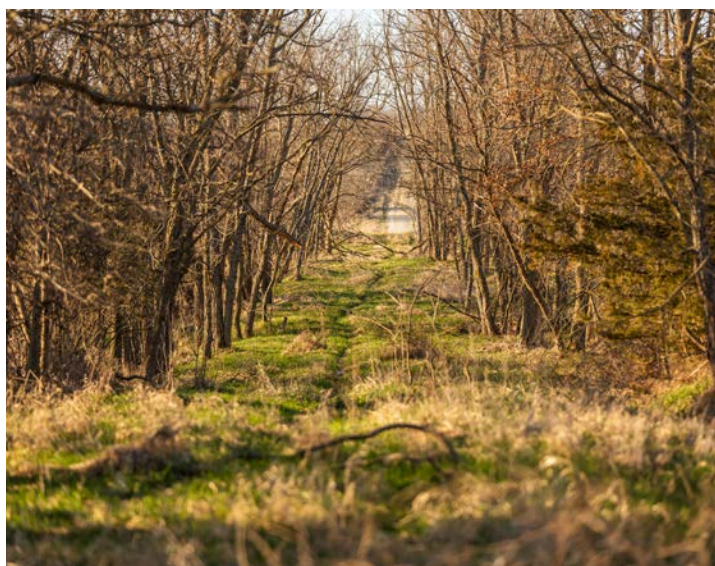
GREAT BUILD SITES



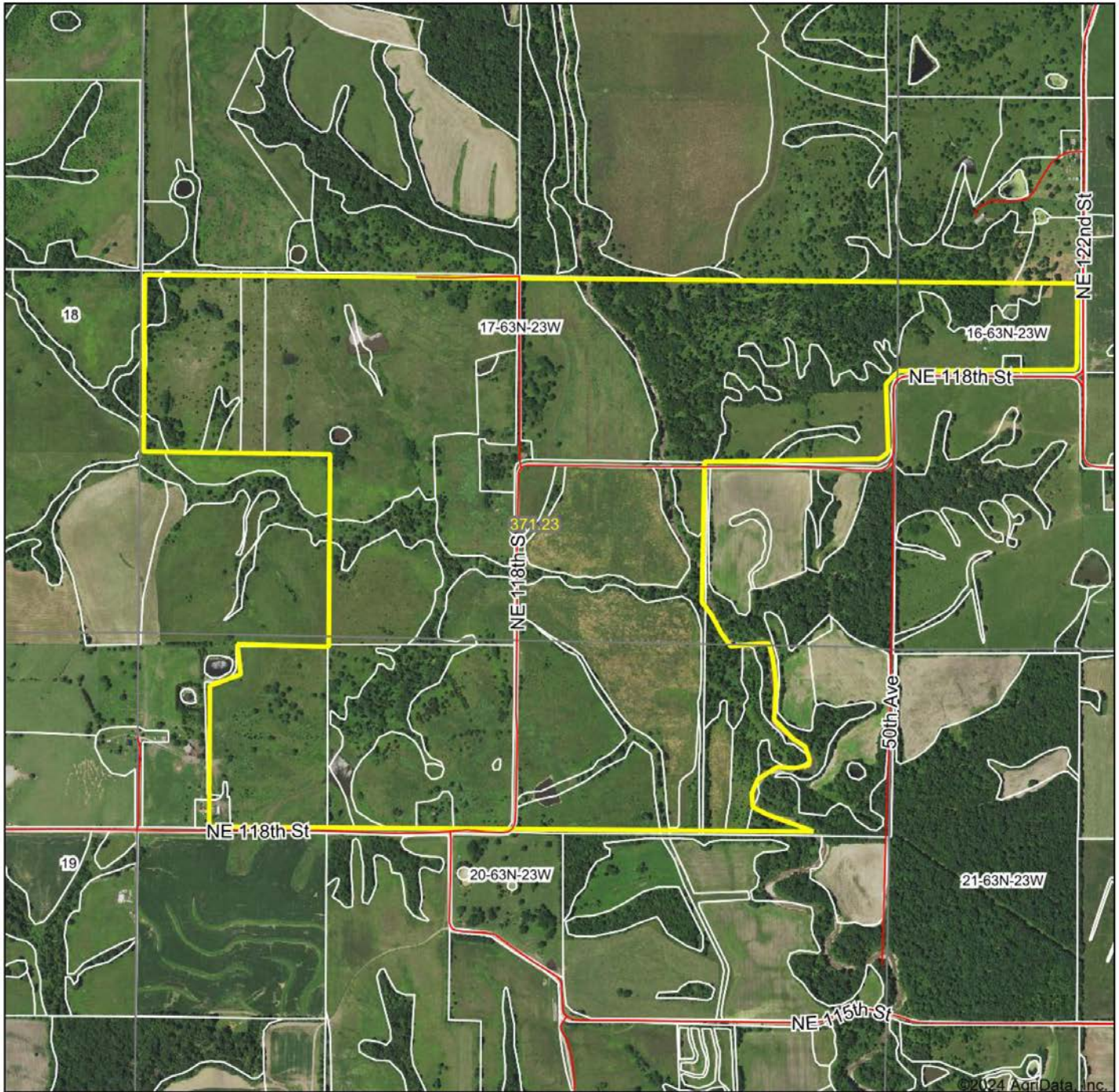
WEST HONEY CREEK



EXCEPTIONAL WILDLIFE HABITAT

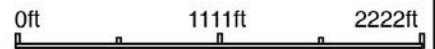


AERIAL MAP



©2024 AgriData, Inc.

Boundary Center: 40° 15' 8.79, -93° 30' 23.05



Maps Provided By:



© AgriData, Inc. 2023 www.AgriDataInc.com

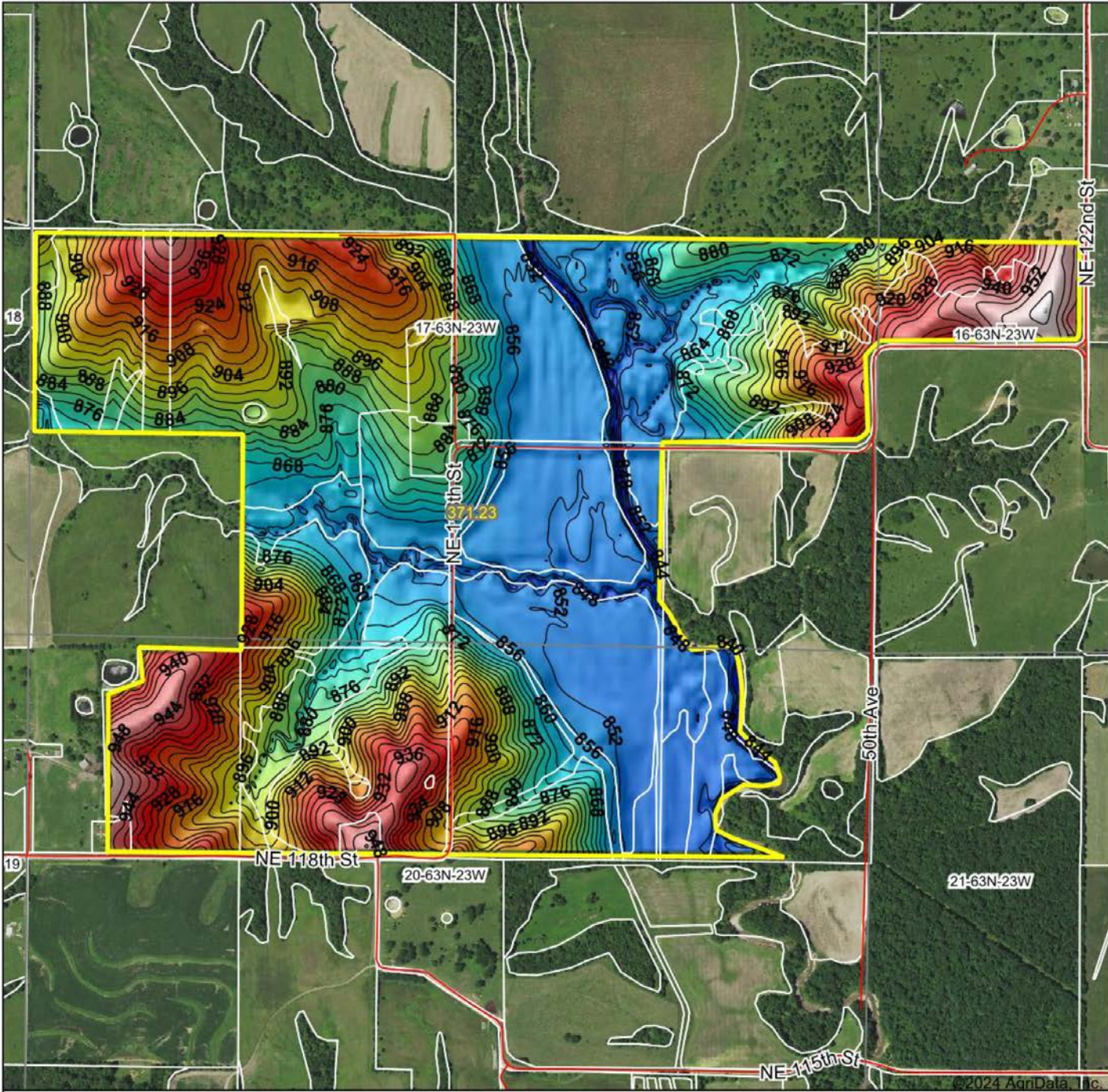
17-63N-23W
Grundy County
Missouri



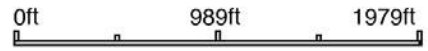
4/1/2024

Field borders provided by Farm Service Agency as of 5/21/2008.

HILLSHADE MAP



Source: USGS 10 meter dem
 Interval(ft): 4
 Min: 836.1
 Max: 961.6
 Range: 125.5
 Average: 885.4
 Standard Deviation: 30.09 ft



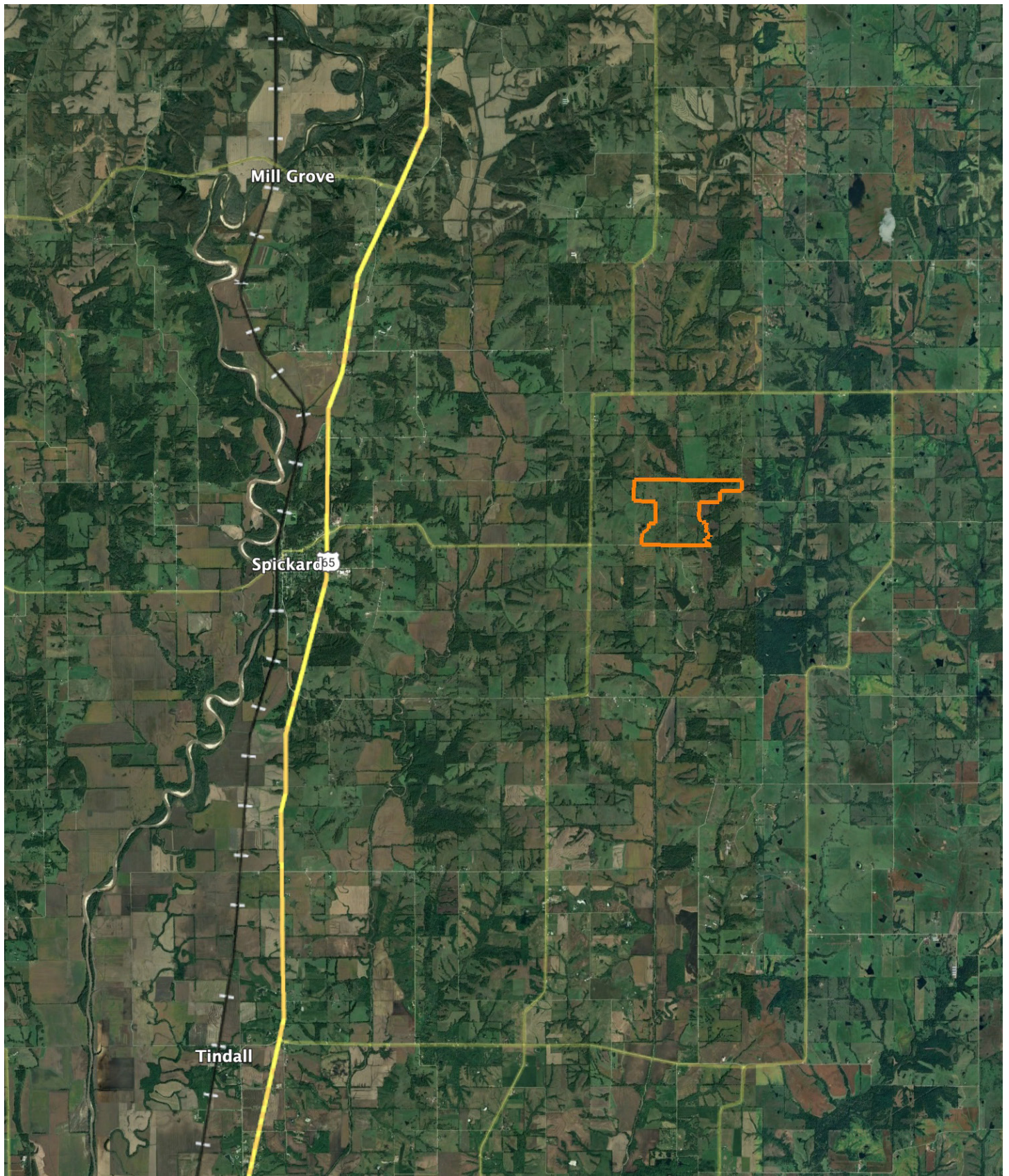
17-63N-23W
Grundy County
Missouri

Boundary Center: 40° 15' 8.79, -93° 30' 23.05

Maps Provided By:

 © AgriData, Inc. 2023 www.AgriDataInc.com
 Field borders provided by Farm Service Agency as of 5/21/2008

OVERVIEW MAP



AGENT CONTACT

David comes from a military family. He was born in Germany, grew up in Syracuse, New York and attended college in Florida. David wanted to become a pilot, but at the time, Vietnam veterans were returning from the war and taking those positions with the airlines. "I saw the writing on the wall and decided to earn a dual degree in aeronautical and computer science. Becoming a commercial pilot was going to be nearly impossible since I was competing with experienced pilots, so I ended up in computer programming for 20 years," says David. What he calls his mid-life crisis resulted in David starting an insurance agency in 2005, which specializes in farm and ranch insurance. In 2002, he bought a 320-acre farm and spent years turning it into a hunter's paradise. "I built a wildlife habitat management company called Habitat Development Solutions. I used it to improve food plots and crops on my land, and I worked with conservation groups and land owners to create a rich habitat for game and farming on other properties.

Land stewardship means taking care of land so it can meet its God-given potential. It involves leaving the land better than you found it," David explains. That is what he's doing with the 805 acres he purchased in 2013 in Mercer County on the Missouri/Iowa border where he runs a successful row crop farm and pursues his passion, bow hunting Midwest white tails and hard gobbling eastern turkeys. He has the invaluable eye you need when it comes to evaluating a property's food, water and cover. More importantly, he can offer advice on how to improve these conditions for better farming and hunting. A lifetime of insuring farms and ranches, designing wildlife habitat, raising crops and hunting means David has extraordinary knowledge you can count on to help you find the land you're looking for and develop it to its full potential.

David raised one daughter and has two stepsons at home. His dream is to retire on land, maybe his 805 acres, with his wife. Until then he is enjoying connecting people with land that meets their goals. Whether you're a hunter, farmer or both, talk to David about what to look for. All it takes is a few minutes with him to see helping people buy and sell land is his passion.



DAVID BROTHERS,
LAND AGENT

660.240.3243

DBrothers@MidwestLandGroup.com



MidwestLandGroup.com

This property is being offered by Midwest Land Group, LLC. 913.674.8010. All information provided by Midwest Land Group, LLC or their agents was acquired from sources deemed accurate and reliable, however we do not warrant its accuracy or completeness. Midwest Land Group, LLC assumes no liability for error, omission or investment results. Midwest Land Group, LLC. Licensed in Arkansas, Illinois, Iowa, Kansas, Minnesota, Missouri, Nebraska, Oklahoma, South Dakota, Texas, and Wisconsin.