

MIDWEST LAND GROUP PRESENTS

38 ACRES IN

---

# AITKIN COUNTY MINNESOTA



[MidwestLandGroup.com](http://MidwestLandGroup.com)



MIDWEST LAND GROUP IS HONORED TO PRESENT

# UP NORTH GETAWAY WITH 3 HOUSES ON 38 +/- ACRES 20 MINUTES FROM MILLE LACS LAKE

3 houses nestled on 38 +/- acres just 20 miles directly east of Malmo (the north end of Mille Lacs Lake) in Aitkin County on a blacktop road. The 3 houses combined add up to roughly 7,800 finished square feet so there's plenty of finished living space. On top of this, there is a 58' tower structure to get an awesome look from up above and a 48'x31' outbuilding. You will also find yourself smack in the middle of a ton of public ground to really give you the up-north feel. To the west and to the

south of the property is the Solana State Forest, which consists of 55,000 public acres and endless ATV trails to get off the grid. Not to mention endless deer, grouse, turkey, and other hunting opportunities.

If you are looking for an awesome hunting camp for a big group of people, a retreat for big groups, or if you are looking for an investment opportunity for renters this property has a lot to offer.

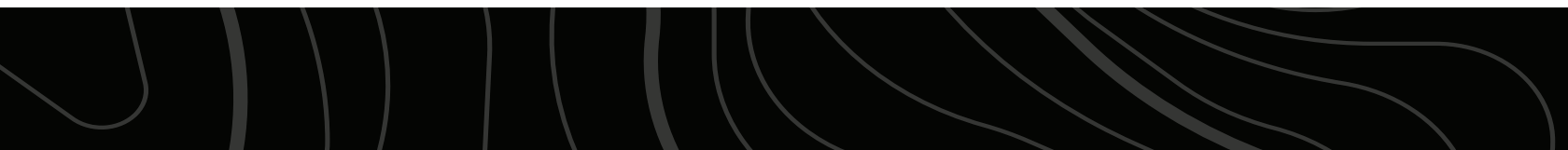




# PROPERTY FEATURES

PRICE: **\$549,000** | COUNTY: **AITKIN** | STATE: **MINNESOTA** | ACRES: **38**

- 3 houses
- 48'x 31' outbuilding
- Pond
- Deer and turkey sign all throughout the property
- 20 minutes from Mille Lacs Lake
- Surrounded by the Solana National Forest (55,000 acres of public ground)
- Miles and miles of public ATV trails
- 58' tower





# 3 HOUSES

---

The 3 houses combined add up to roughly 7,800 finished square feet so there's plenty of finished living space. On top of this, there is a 58' tower structure to get an awesome look from up above and a 48'x31' outbuilding.





# POND

---



## 48'X 31' OUTBUILDING

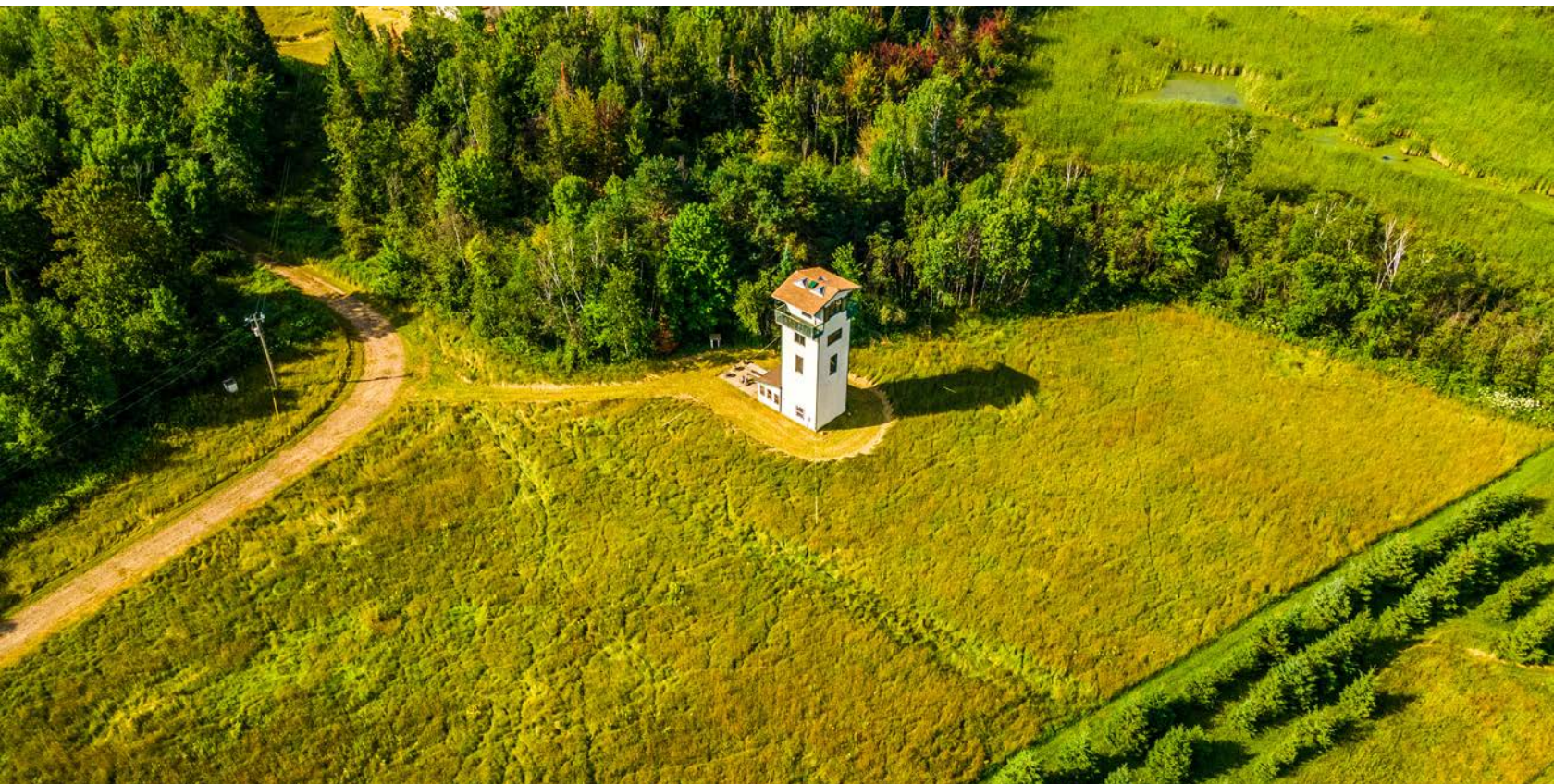
---





# 58' TOWER

---





# AERIAL MAP



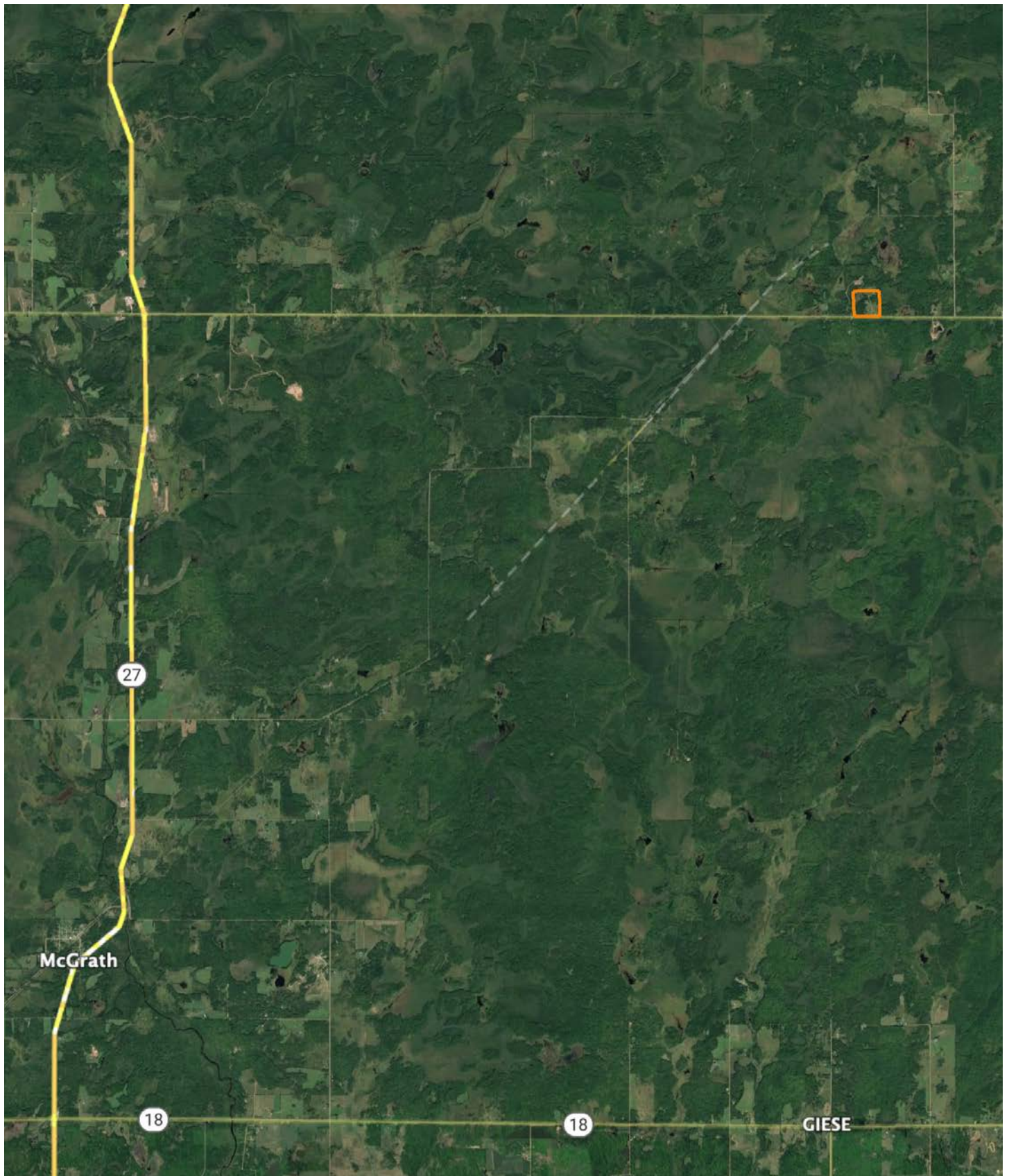
220th St

126th Pl

2



# OVERVIEW MAP





# AGENT CONTACT

---

A native of Minneapolis and currently rooted in Rogers, Tony Arendt's connection to Minnesota is profound. Those cherished childhood moments hunting and fishing with his father sowed a love for the land that only deepened over time. Educated at Breck School and Indiana University, with a focus on Communications & Culture, Tony seamlessly combines his understanding of land with the art of effective communication and marketing.

His passion for bowhunting, encompassing everything from strategizing food plots to chasing trophy whitetails, showcases Tony's dedication and meticulous approach to land. Leveraging expertise in food plot design, crop rotation, and land optimization, he ensures every parcel reaches its potential.

But what truly sets Tony apart is his genuine dedication to his clients. Drawing from his prior health and wellness background, he champions exceptional service, underscored by attentive listening. He understands the profound legacy of land investment, a wisdom passed down from his grandfather, and mirrors this in his dealings, making him an agent of trust.

As a proud member of The Minnesota Forestry Association and with strong community ties, including his wife Christy and their three children, Tony embodies sustainability and midwestern values.

With Tony Arendt, you're partnering with more than an agent; you're collaborating with a legacy-bearer who lives the land, prioritizes your vision, and commits to realizing your dreams.



**TONY ARENDT**, LAND AGENT  
**612.682.9237**  
Tarendt@MidwestLandGroup.com



---

## MidwestLandGroup.com

This property is being offered by Midwest Land Group, LLC. 913.674.8010. All information provided by Midwest Land Group, LLC or their agents was acquired from sources deemed accurate and reliable, however we do not warrant its accuracy or completeness. Midwest Land Group, LLC assumes no liability for error, omission or investment results. Midwest Land Group, LLC. Licensed in Arkansas, Illinois, Iowa, Kansas, Minnesota, Missouri, Nebraska, Oklahoma, South Dakota, Tennessee, Texas, Wisconsin, and Wyoming.