

MIDWEST LAND GROUP PRESENTS

20 ACRES IN

STONE COUNTY MISSOURI



MidwestLandGroup.com

MIDWEST LAND GROUP IS HONORED TO PRESENT

TABLE ROCK LAKE VIEWS

Welcome to your picturesque paradise in the heart of the Ozarks! This exceptional 20 +/- acre property in Stone County, Missouri offers a rare opportunity to experience the beauty and tranquility of Ozarks country living, just minutes from Table Rock Lake. With good frontage on State Highway H, this property is conveniently located near the Corp of Engineers Big Indian Public area that provides a public boat ramp and park-like setting. The property features a beautiful, wooded hilltop that overlooks the property's green pastures, a stunning panoramic view

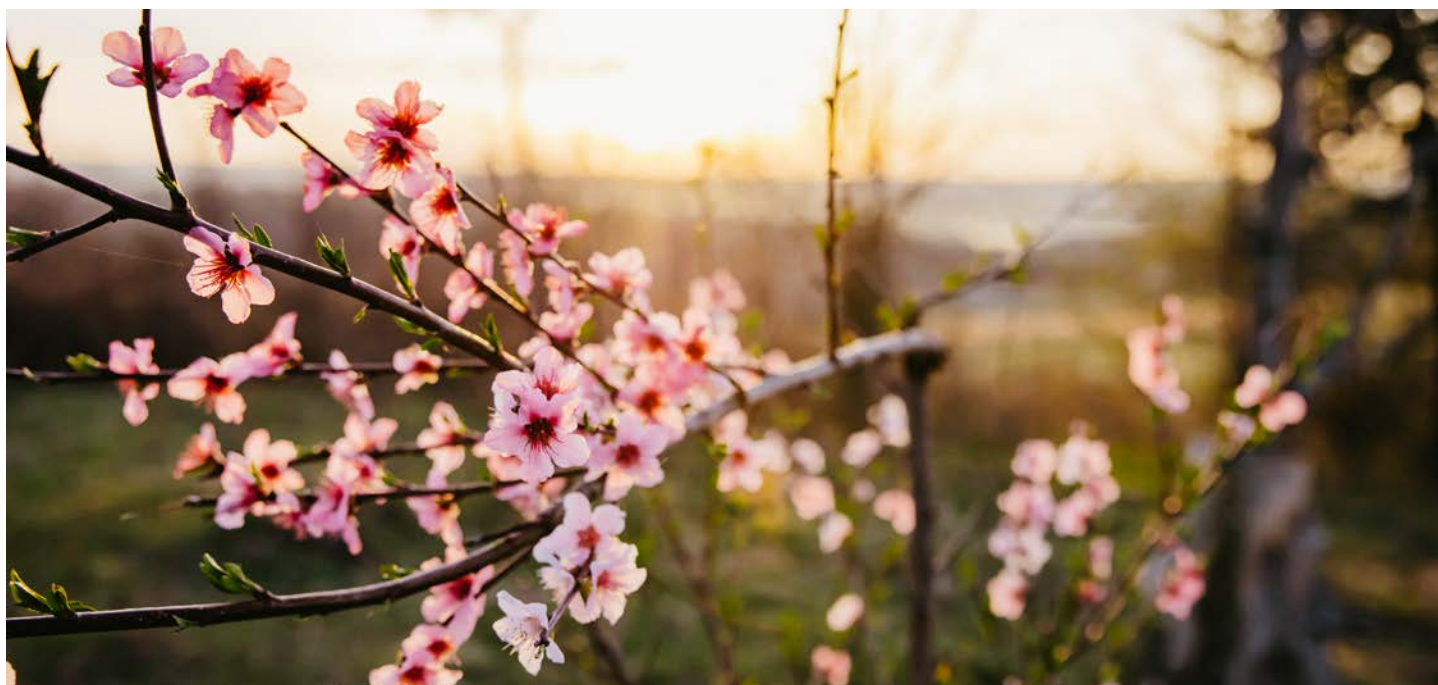
of the Missouri Ozarks as well as some Table Rock Lake views! Whether you're looking to build a permanent residence, a vacation home, a weekend getaway, or just have somewhere to get away to enjoy a peaceful sunset over the Ozark Mountains, this property provides the perfect setting. Don't miss this rare opportunity to own a piece of the Ozarks! With its ideal location, stunning views, and endless possibilities, this 20 +/--acre property is truly a one-of-a-kind find. Schedule your showing today and start living the Ozark dream!



PROPERTY FEATURES

PRICE: **\$135,000** | COUNTY: **STONE** | STATE: **MISSOURI** | ACRES: **20**

- Lake view
- Pond
- Highway frontage
- Within 5 minutes of the lake
- Close to public boat ramp
- Secluded
- Great build location
- Fenced
- Wildlife
- Utilities close



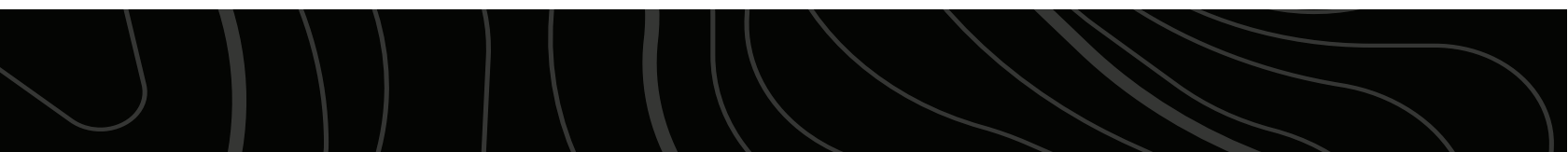
20 +/- ACRES



POND



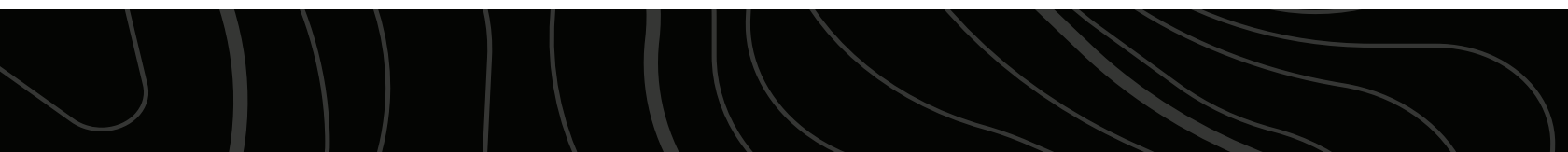
GREAT BUILD LOCATION



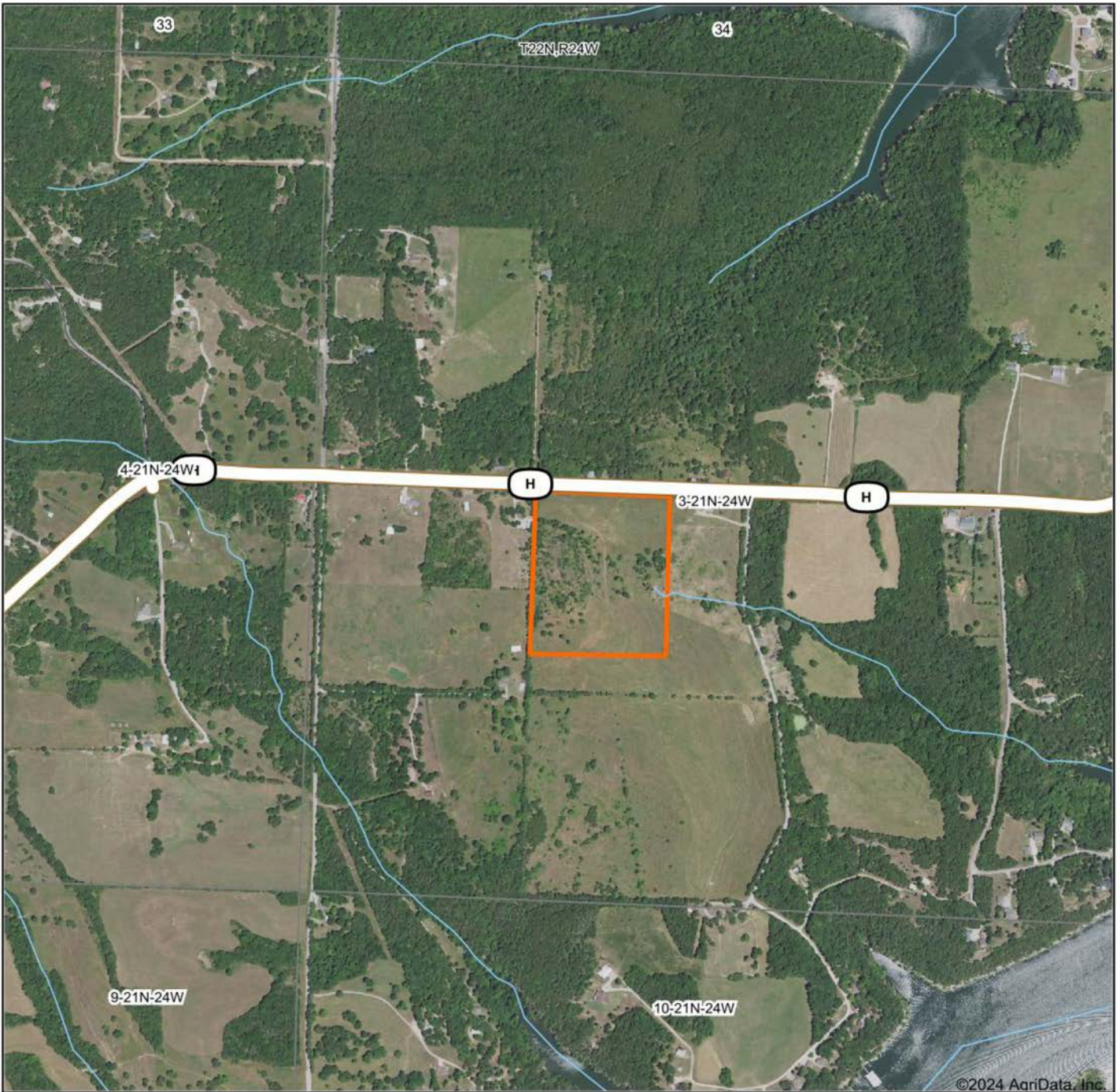
HIGHWAY FRONTAGE



ADDITIONAL PHOTOS

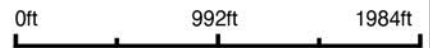


AERIAL MAP



©2024 AgriData, Inc.

Boundary Center: 36° 33' 9.09, -93° 31' 22.46



Maps Provided By:



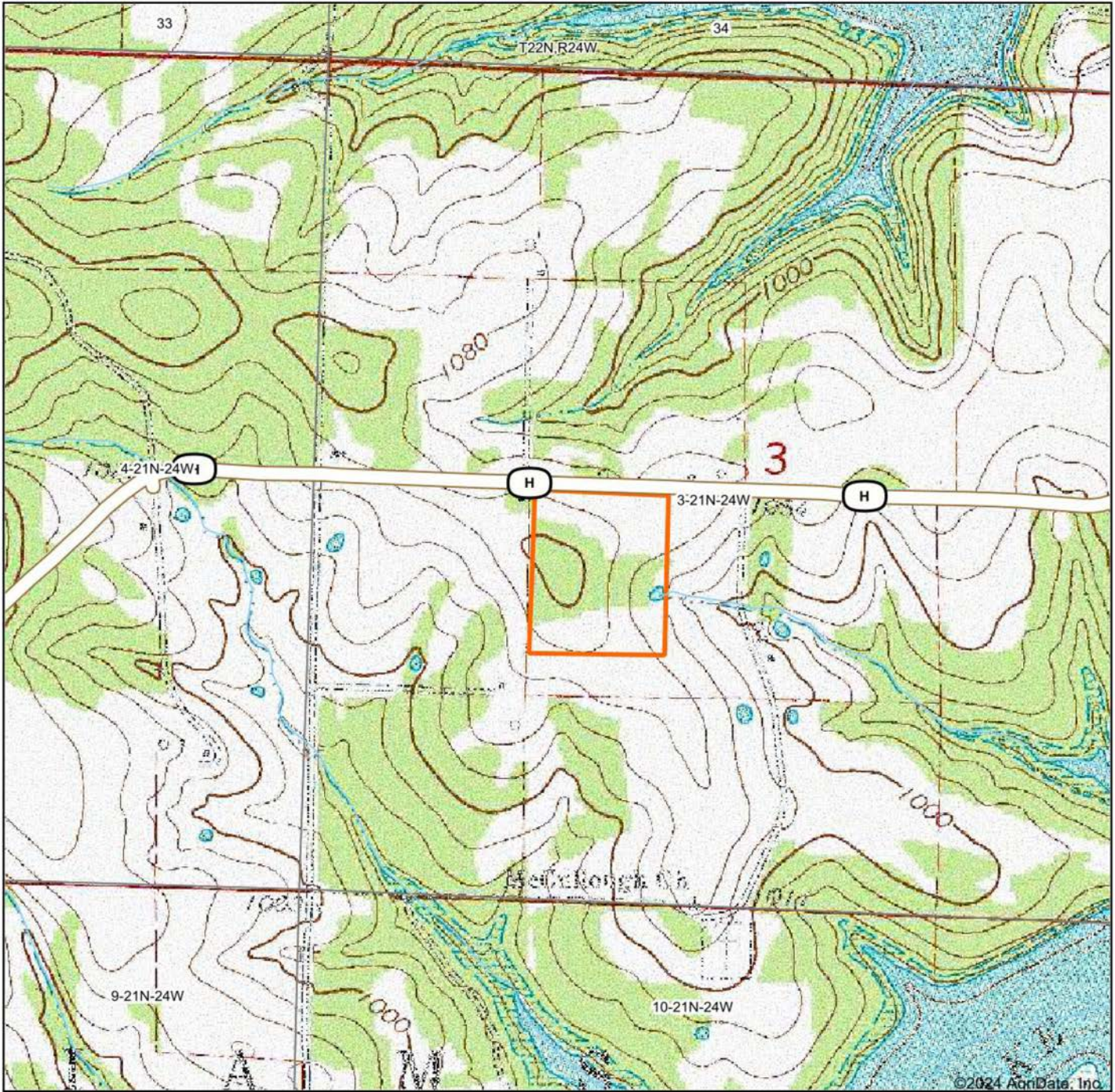
© AgriData, Inc. 2023 www.AgriDataInc.com

3-21N-24W
Stone County
Missouri



3/5/2024

TOPOGRAPHY MAP



©2024 AgriData, Inc.

Map Center: 36° 33' 10.71, -93° 31' 25.68

0ft 992ft 1984ft



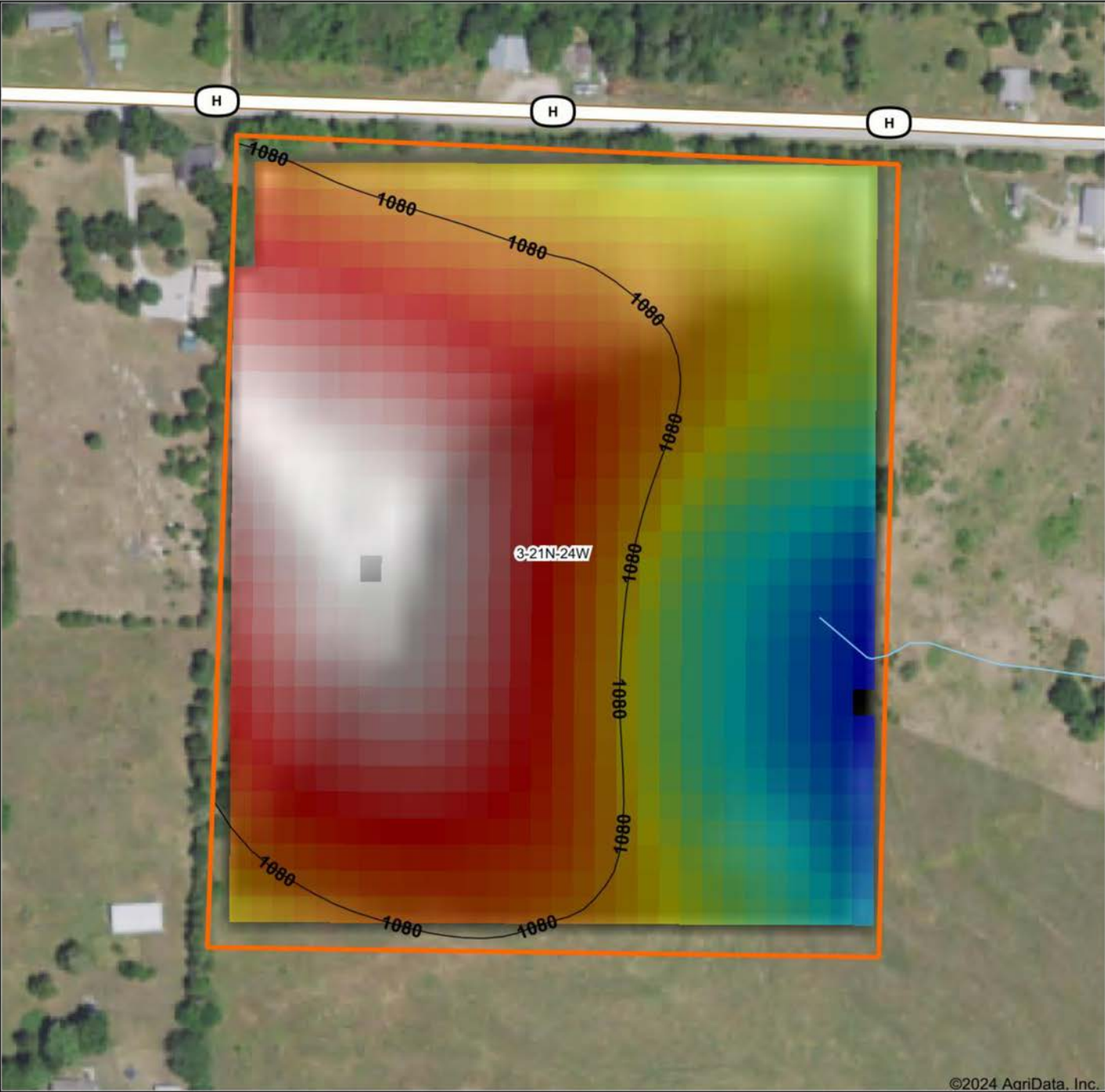
Maps Provided By:
surety
CUSTOMIZED ONLINE MAPPING
© AgriData, Inc. 2023 www.AgriDataInc.com

3-21N-24W
Stone County
Missouri

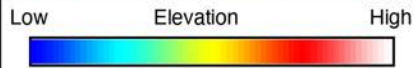


3/5/2024

HILLSHADE MAP



©2024 AgriData, Inc.



Maps Provided By:

surety
CUSTOMIZED ONLINE MAPPING

© AgriData, Inc. 2023 www.AgriDataInc.com

Source: USGS 10 meter dem
Interval(ft): 40
Min: 1,041.0
Max: 1,104.4
Range: 63.4
Average: 1,080.3
Standard Deviation: 15.62 ft



3/5/2024

3-21N-24W
Stone County
Missouri

Boundary Center: 36° 33' 9.09, -93° 31' 22.46

OVERVIEW MAP



AGENT CONTACT

Looking for land or selling a piece of property can be stressful or overbearing, but not if you're working with the right agent. Bjorn Wilkerson is all about making sure each client has an enjoyable experience from start to finish. A lifelong lover of the outdoors, Bjorn has a background in agriculture and a passion for all things outdoors. This includes hunting, fishing, camping, traveling, hiking, and land management, not to mention his personal favorites: spring turkey hunting, whitetail hunting, and bowfishing. Born in West Plains, Missouri, Bjorn attended Couch High School and graduated from Missouri State University—Springfield with a degree in Wildlife Management. Before coming to Midwest Land Group, he worked in agriculture and operations with Archer Daniels Midland (ADM), a human and animal nutrition company specializing in agricultural origination and processing, where he worked his way around the company, serving in a variety of positions, everything from trainee, plant manager, and recruiter to new manager development specialist and continuous improvement practitioner. Being a service to someone looking for hunting or farming property is what drives Bjorn. He wants each experience to not only be enjoyable, but seamless as well. If you're in the market to sell or buy land, give Bjorn a call.



BJORN WILKERSON,
LAND AGENT

417.233.1243

BWilkerson@MidwestLandGroup.com



MidwestLandGroup.com

This property is being offered by Midwest Land Group, LLC. 913.674.8010. All information provided by Midwest Land Group, LLC or their agents was acquired from sources deemed accurate and reliable, however we do not warrant its accuracy or completeness. Midwest Land Group, LLC assumes no liability for error, omission or investment results. Midwest Land Group, LLC. Licensed in Arkansas, Illinois, Iowa, Kansas, Minnesota, Missouri, Nebraska, Oklahoma, South Dakota, Texas, and Wisconsin.