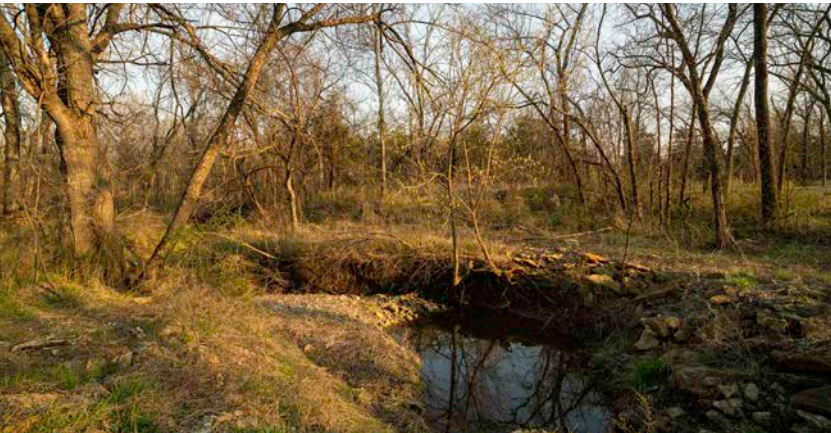
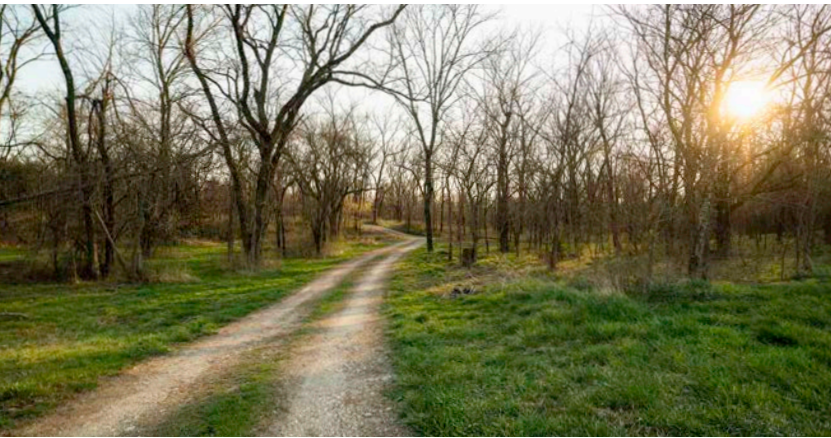


MIDWEST LAND GROUP PRESENTS



# MIAMI COUNTY, KS

19 ACRES



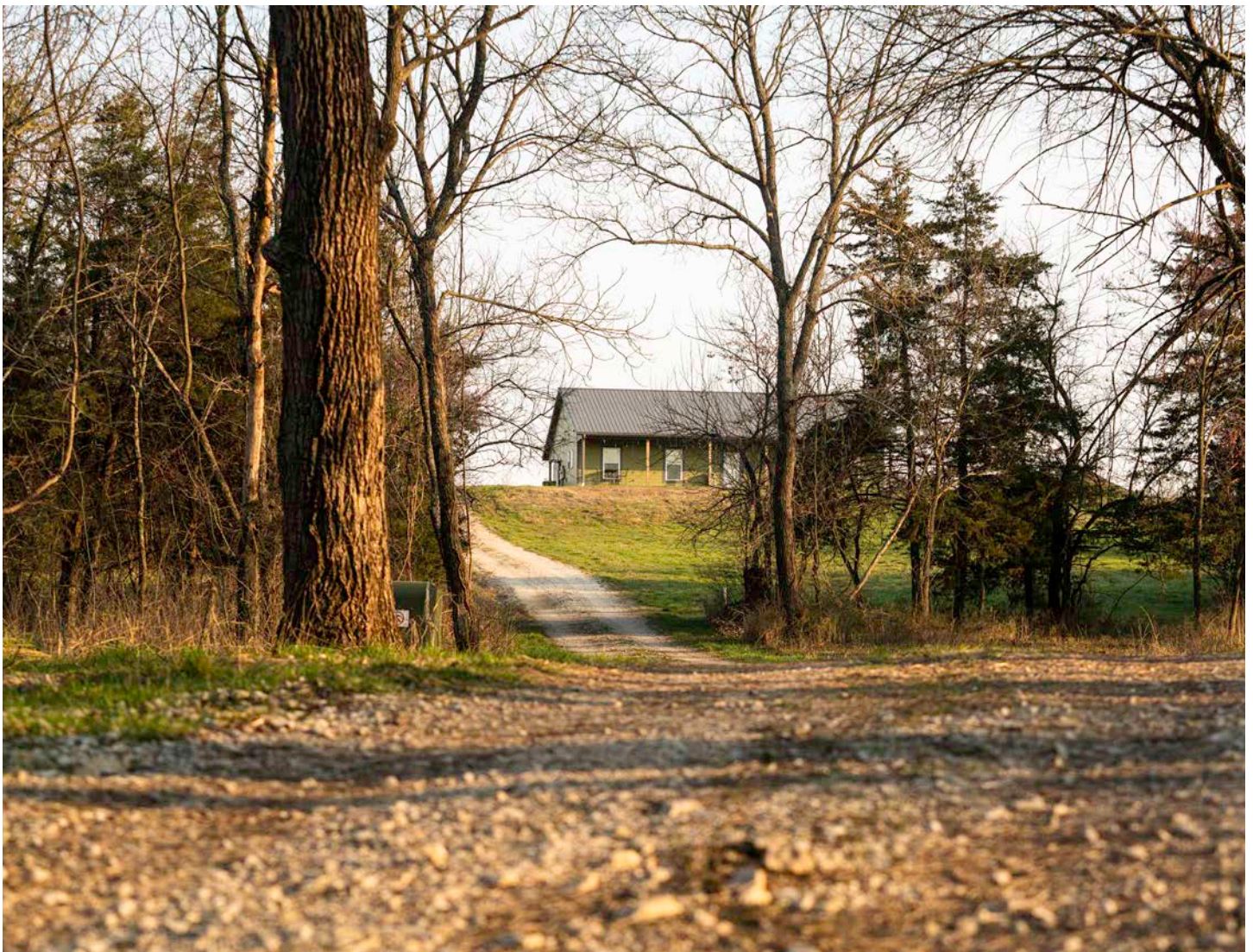
[MidwestLandGroup.com](http://MidwestLandGroup.com)

MIDWEST LAND GROUP IS HONORED TO PRESENT

# SECLUDED LIVING AND PROPERTY IN MIAMI COUNTY

This stunning property offers a unique opportunity for beautiful and secluded living in Miami County, Kansas. Situated on 19 +/- acres of land, this property features a charming 1,870 sq. ft. home with 3 bedrooms and 2 bathrooms, providing ample space for comfortable living. The ultimate privacy is guaranteed by the secluded location and house on the hill, with the property being 1 mile off the blacktop, ensuring peace and tranquility for its residents. In addition to the spacious home, this

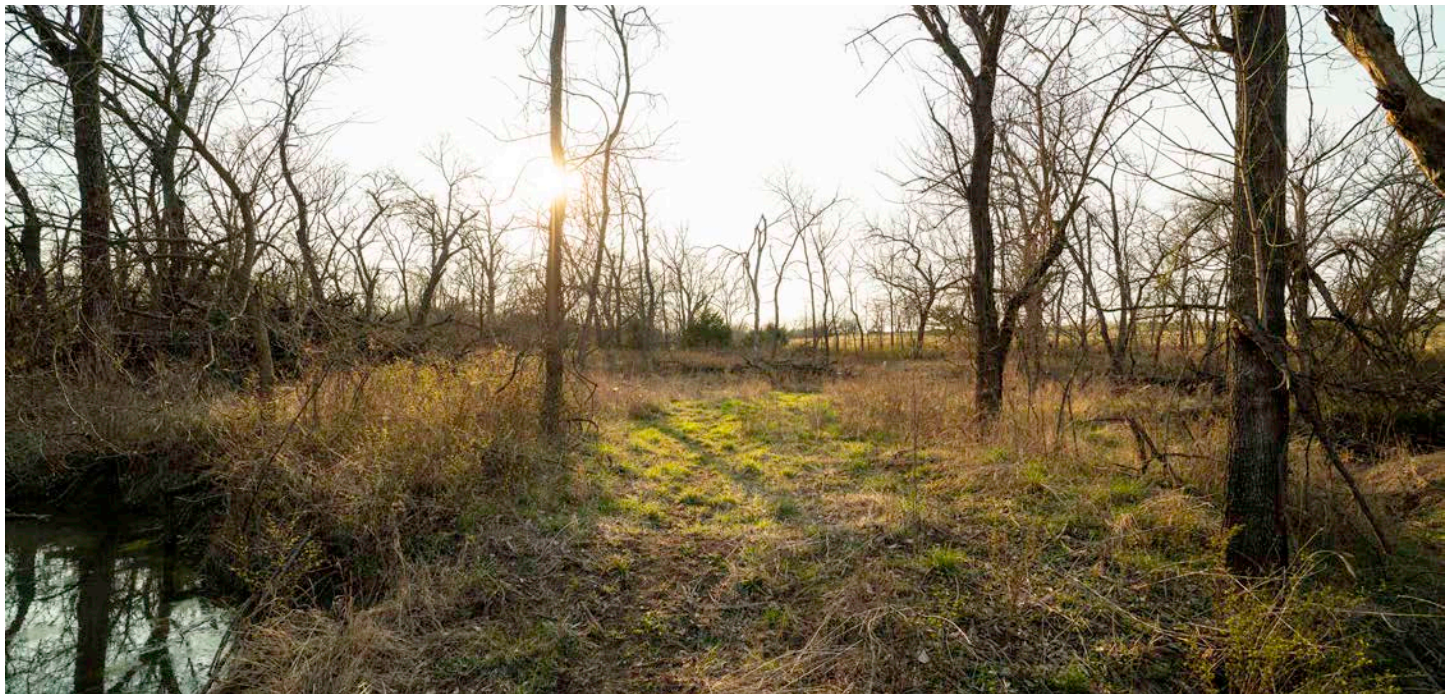
property also boasts a 30'x60' shop for all your storage and hobby needs. The outdoor space is enhanced by a pond and creek, adding to the natural beauty of the surroundings. The updated kitchen and spacious master bedroom further enhance the appeal of this property, making it a perfect retreat from the hustle and bustle of city life. Located just 45 minutes from Overland Park, this property offers the best of both worlds - a serene country setting within easy reach of urban amenities.



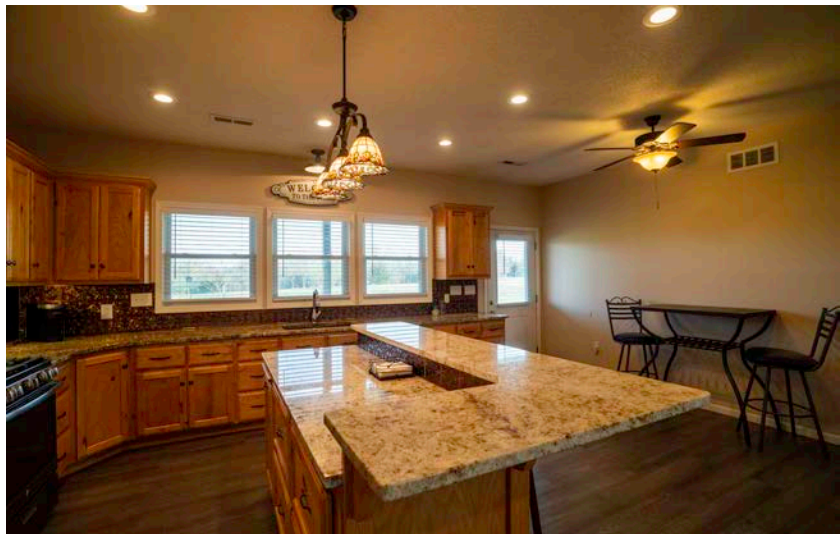
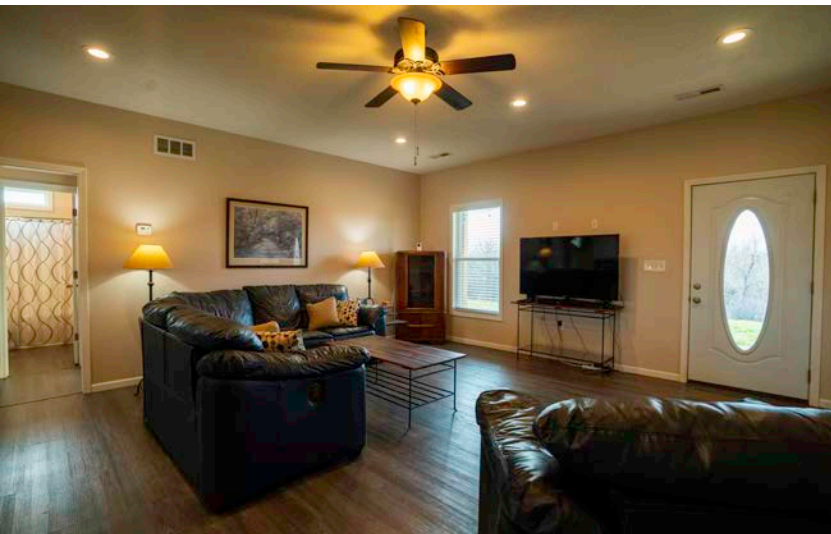
# PROPERTY FEATURES

PRICE: **\$495,950** | COUNTY: **MIAMI** | STATE: **KANSAS** | ACRES: **19**

- 3 bed, 2 bath
- 19 +/- acres
- 1,870 sq. ft. home
- 30'x60' shop
- Ultimate privacy
- Pond and creek
- 1 mile off blacktop
- Updated kitchen
- Spacious master bedroom
- 45 minutes from Overland Park



# 1,870 SQ. FT. HOME



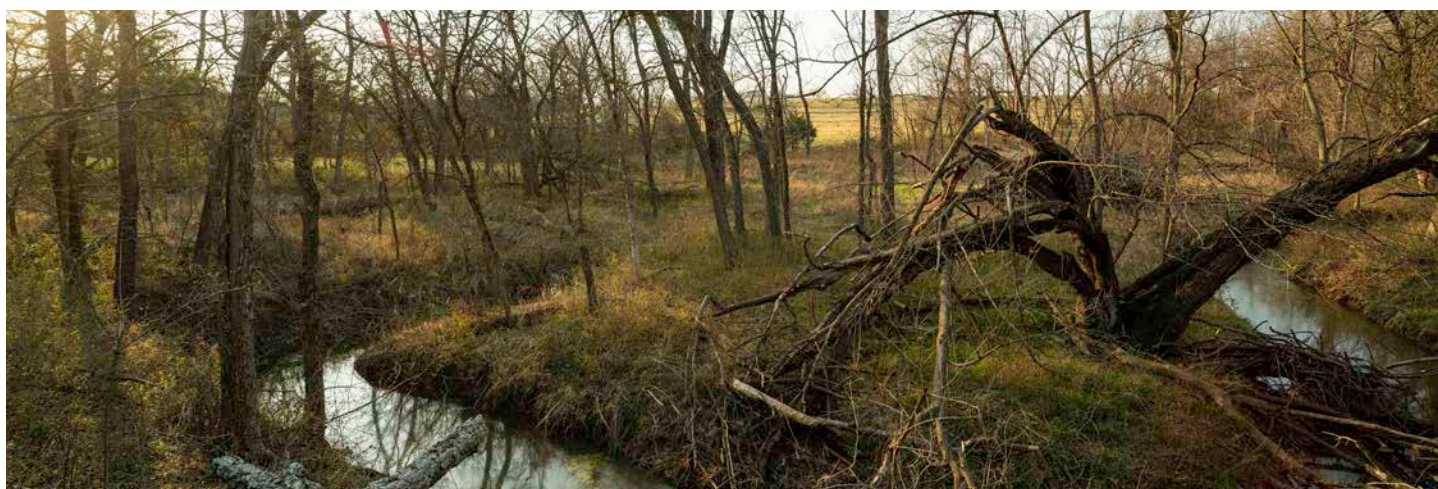
## 30'X60' SHOP

---

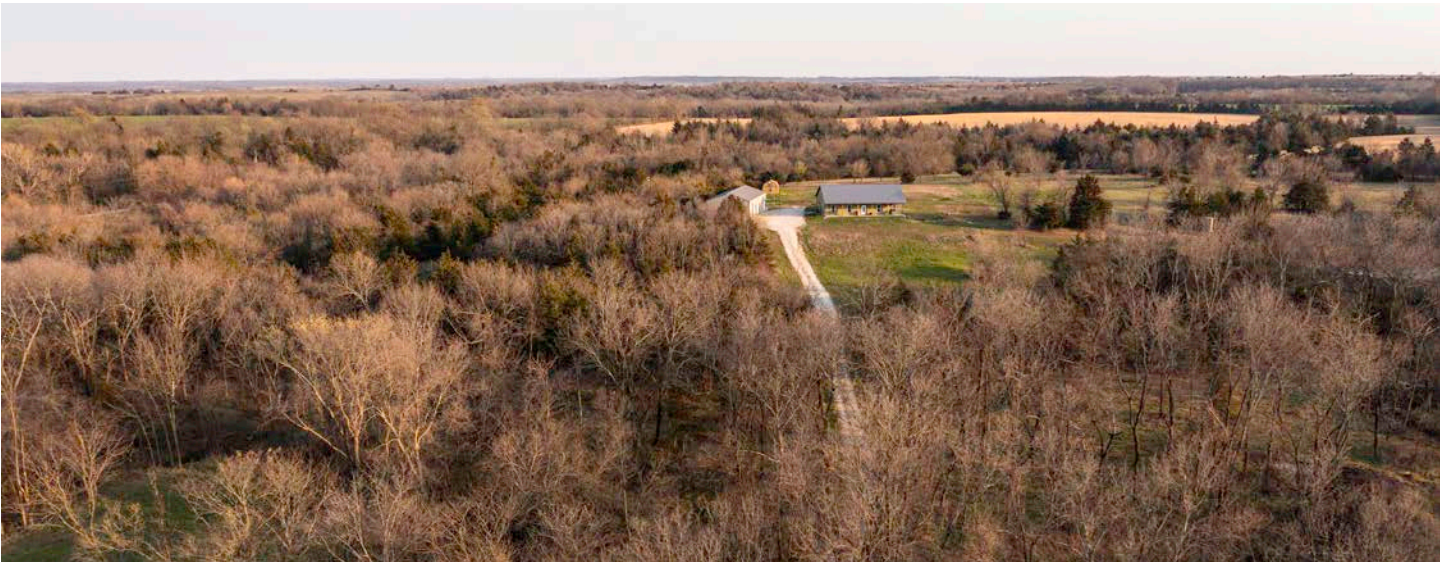
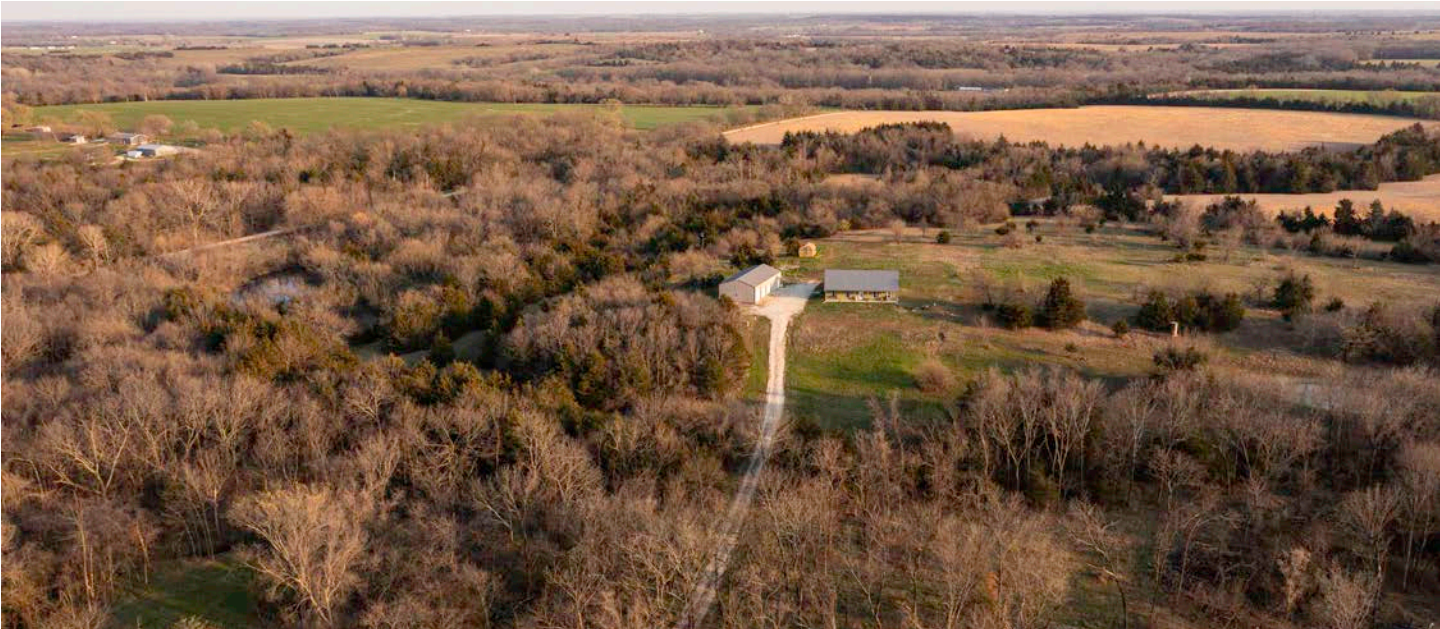


## POND AND CREEK

---

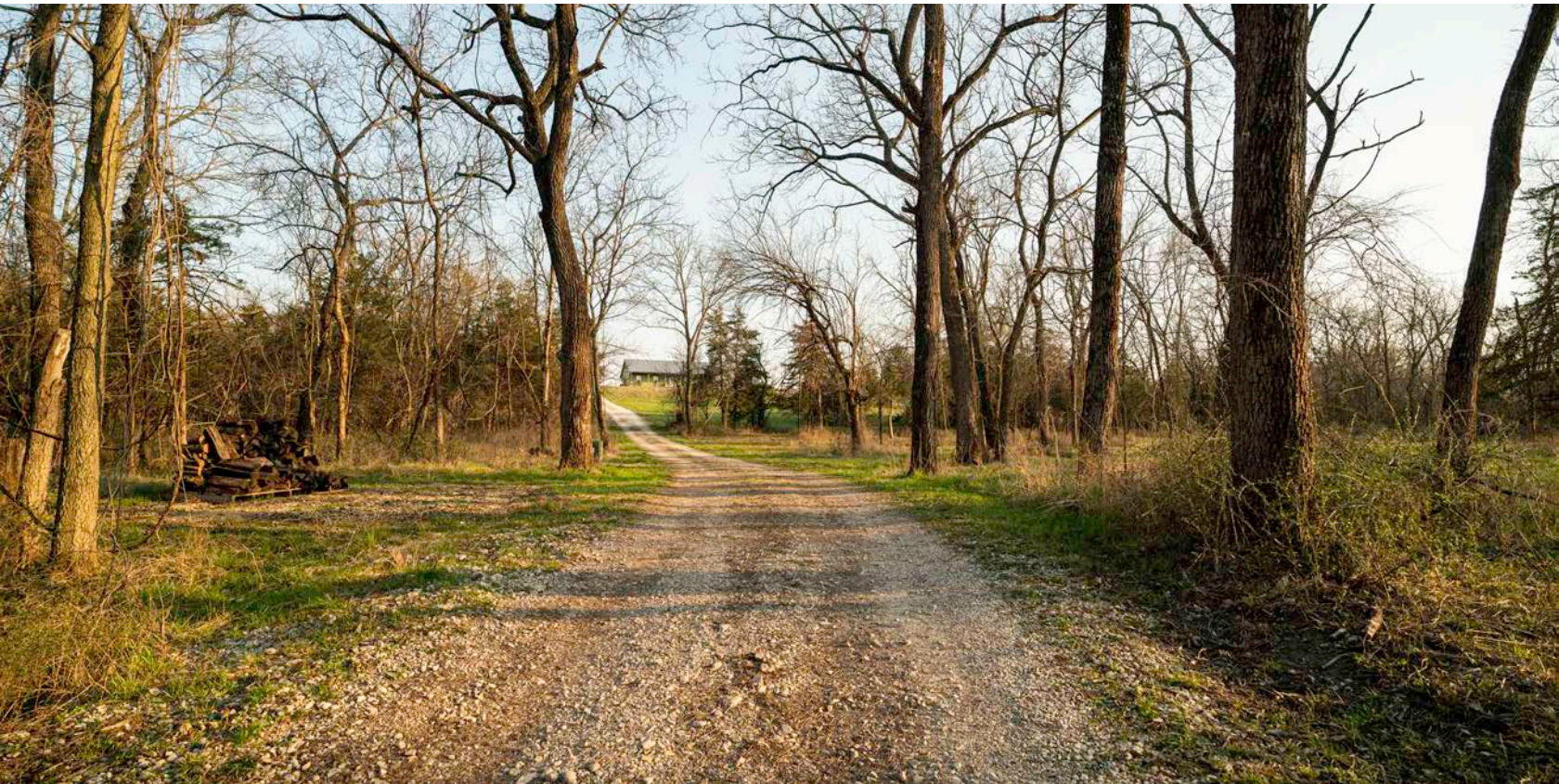


# 19 +/- ACRES



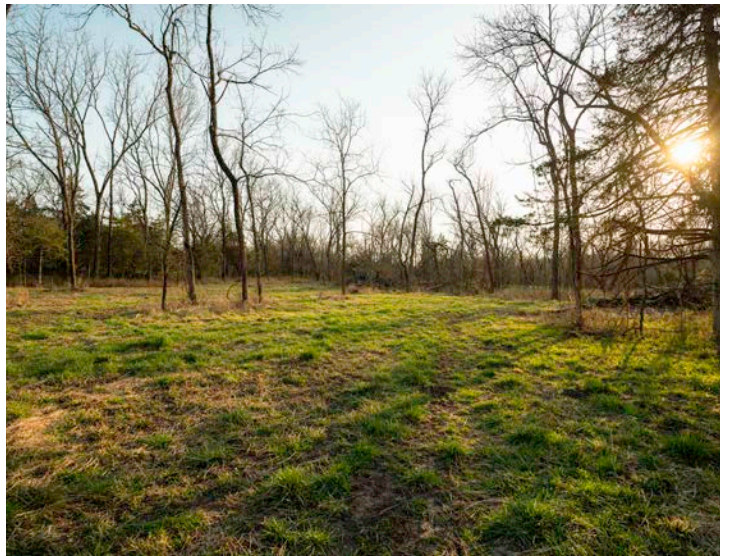
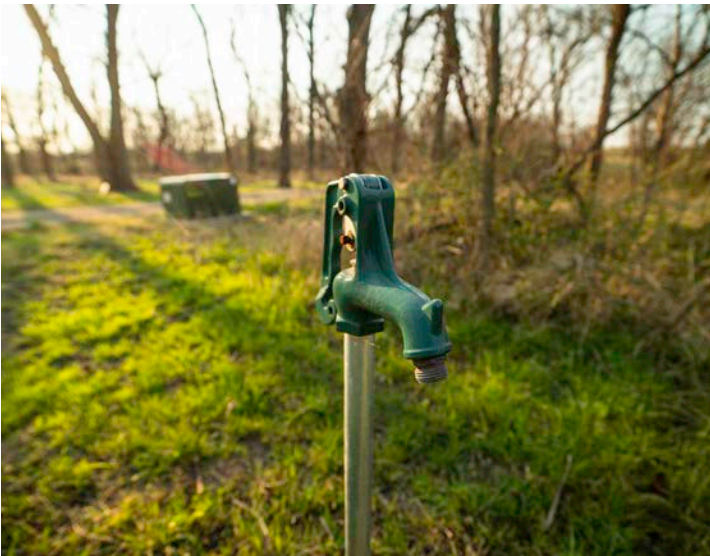
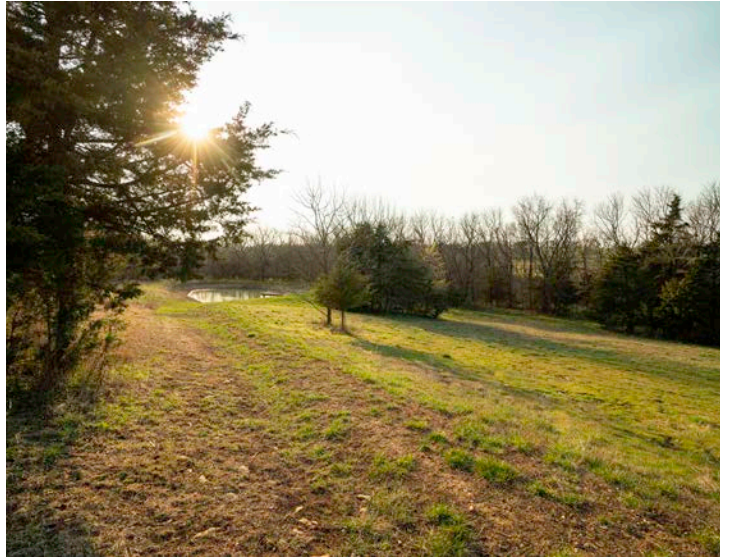
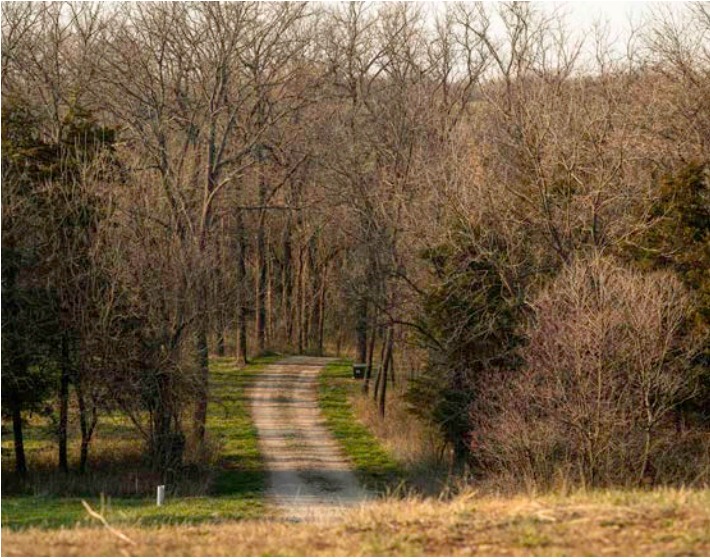
# ULTIMATE PRIVACY

---



# ADDITIONAL PHOTOS

---



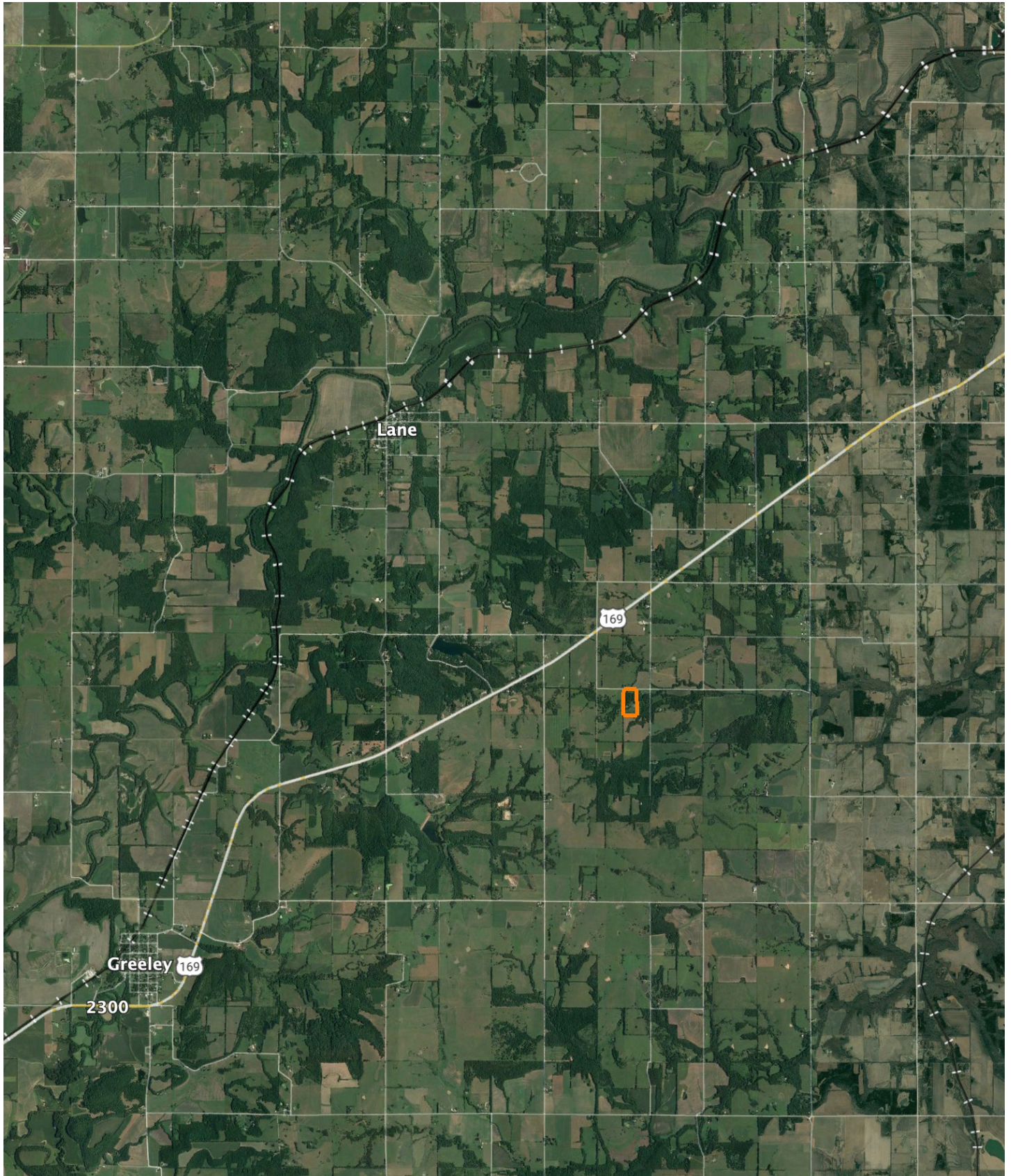


# AERIAL MAP

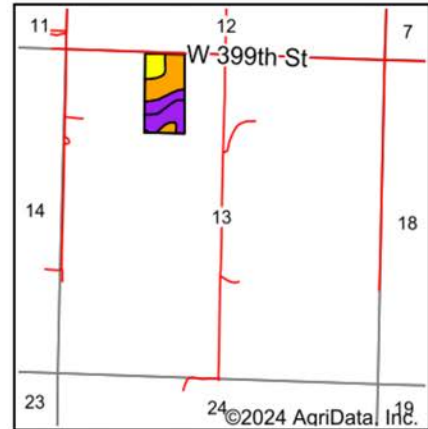
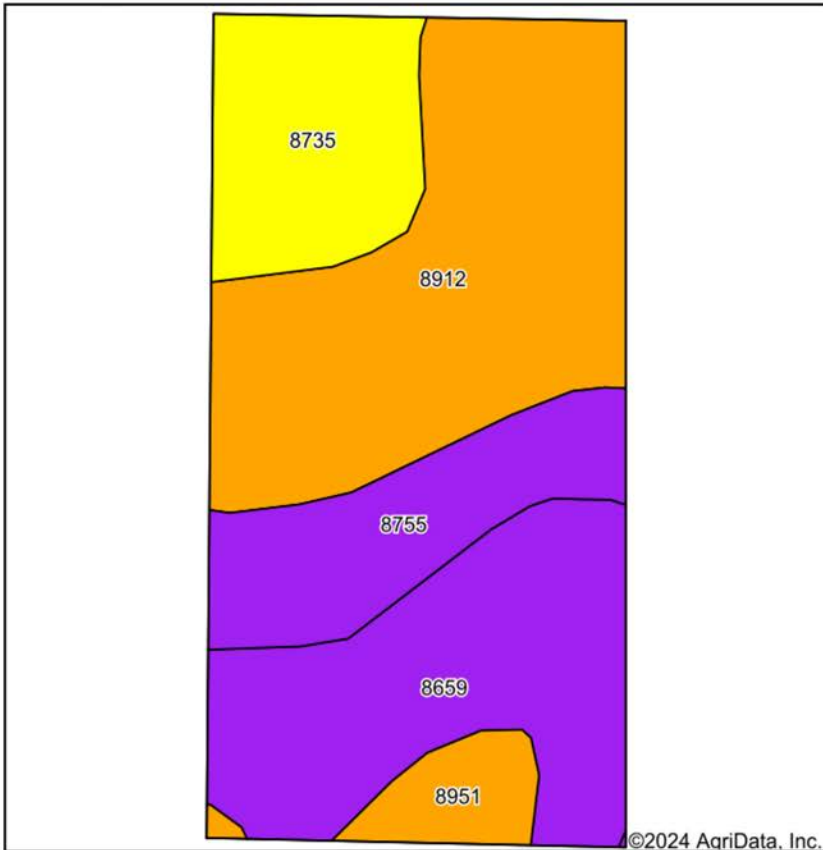
---



# OVERVIEW MAP



# SOIL MAP



State: **Kansas**  
 County: **Miami**  
 Location: **13-19S-21E**  
 Township: **Mound**  
 Acres: **19.65**  
 Date: **3/25/2024**



Maps Provided By:



Soils data provided by USDA and NRCS.

Area Symbol: KS121, Soil Area Version: 24

Code	Soil Description	Acres	Percent of field	Non-Irr Class Legend	Restrictive Layer	Non-Irr Class *c	Range Production (lbs/acre/yr)	*n NCCPI Overall	*n NCCPI Corn	*n NCCPI Small Grains	*n NCCPI Soybeans
8912	Summit silty clay loam, 3 to 7 percent slopes	7.44	37.9%		> 6.5ft.	IIle	5153	68	68	56	58
8659	Clareson-Eram complex, 3 to 15 percent slopes, very rocky	5.33	27.1%		2ft. (Lithic bedrock)	VIe	3935	43	43	29	31
8755	Eram-Lebo complex, 5 to 20 percent slopes	2.96	15.1%		2.3ft. (Paralithic bedrock)	VIe	4247	50	49	41	36
8735	Eram silty clay loam, 3 to 7 percent slopes	2.95	15.0%		2.6ft. (Paralithic bedrock)	IVe	4116	58	58	45	41
8951	Wagstaff silty clay loam, 1 to 3 percent slopes	0.97	4.9%		2.5ft. (Lithic bedrock)	IIle	4968	52	51	51	43
<b>Weighted Average</b>							<b>4.42</b>	<b>*n 56.2</b>	<b>*n 56</b>	<b>*n 44.5</b>	<b>*n 44.1</b>

\*n: The aggregation method is "Weighted Average using all components"

\*c: Using Capabilities Class Dominant Condition Aggregation Method

# AGENT CONTACT

---

Agent Clay Craft was born and raised in Madison, Mississippi, and grew up with a great passion for the outdoors. As a well-seasoned hunter, Clay managed to harvest his first deer at the age of 4. Shortly after, he started having success with bow hunting. Growing up in a family that was full of hunting and the outdoors, Clay always knew he wanted to make a career out of his passion.

Now, living in Overland Park, Kansas, Clay hunts on his family farms in Kansas and Missouri every year. He's been a part of several hunting TV shows and is currently filming with Heartland Bowhunter, an award-winning show on The Outdoor Channel, which he's done for over a decade. Clay stays true to his roots and loves bow hunting the giant whitetails that the Midwest has to offer. When he's not working, Clay enjoys spending time with his family, playing sports, and setting up his family farms for the next deer and turkey seasons.

Clay takes pride in how to improve and create better hunting farms. From increasing cover to strategic food plot placements, he has the knowledge to find and take farms to the next level. With the experience of hunting thousands of acres, Clay's love for land can't be missed. If you're in the market to buy or sell land in Eastern Kansas, let Clay put his knowledge and expertise to work for you.



**CLAY CRAFT,**

LAND AGENT

**913.677.0299**

[CCraft@MidwestLandGroup.com](mailto:CCraft@MidwestLandGroup.com)



---

**MidwestLandGroup.com**

This property is being offered by Midwest Land Group, LLC. 913.674.8010. All information provided by Midwest Land Group, LLC or their agents was acquired from sources deemed accurate and reliable, however we do not warrant its accuracy or completeness. Midwest Land Group, LLC assumes no liability for error, omission or investment results. Midwest Land Group, LLC. Licensed in Arkansas, Illinois, Iowa, Kansas, Minnesota, Missouri, Nebraska, Oklahoma, South Dakota, Texas, and Wisconsin.