

MIDWEST LAND GROUP PRESENTS

.5 ACRES IN

CLAY COUNTY MISSOURI

2010 RIVERSTONE DR, EXCELSIOR SPRINGS, MO 64024



MidwestLandGroup.com

MIDWEST LAND GROUP IS HONORED TO PRESENT

STUNNING 1.5 STORY CRAFTSMAN STYLE HOME IN EXCELSIOR SPRINGS

Check out this beautiful and spacious craftsman-style 1.5-story home that is only 18 months old! This plan features 3 large bedrooms with oversized walk-in closets and 2.5 bathrooms. The kitchen has gorgeous subway tile with granite countertops, an island, a breakfast bar, and a dining area. The owner's suite located on the main level includes an en suite bathroom with a stunning walk-in shower. The warm and cozy living room with a

fireplace offers the perfect gathering space. The laundry is conveniently located on the main level. The two car garage has plenty of room for storage and lawn tools. The large backyard with a new 6 foot privacy fence provides the ideal setting for entertaining, kids and pets. Located on a quiet cul-de-sac in the unique craftsman-style community of Stone Crossing on the west side of town. Don't miss this beautiful home on a prime lot, it won't last long!



PROPERTY FEATURES

PRICE: **\$375,000** | COUNTY: **CLAY** | STATE: **MISSOURI** | ACRES: **.5**

- 1.5 story
- 1,800 sq. ft.
- 3 beds
- 2.5 baths
- Kitchen with granite, island, and subway tile backsplash
- Master bedroom with en suite bath
- Walk-in showers
- Huge walk-in closets
- Only 18 months old
- Laundry on main level
- Brand new 6 ft. privacy fence
- Quiet cul-de-sac



1,800 SQ. FT. HOME



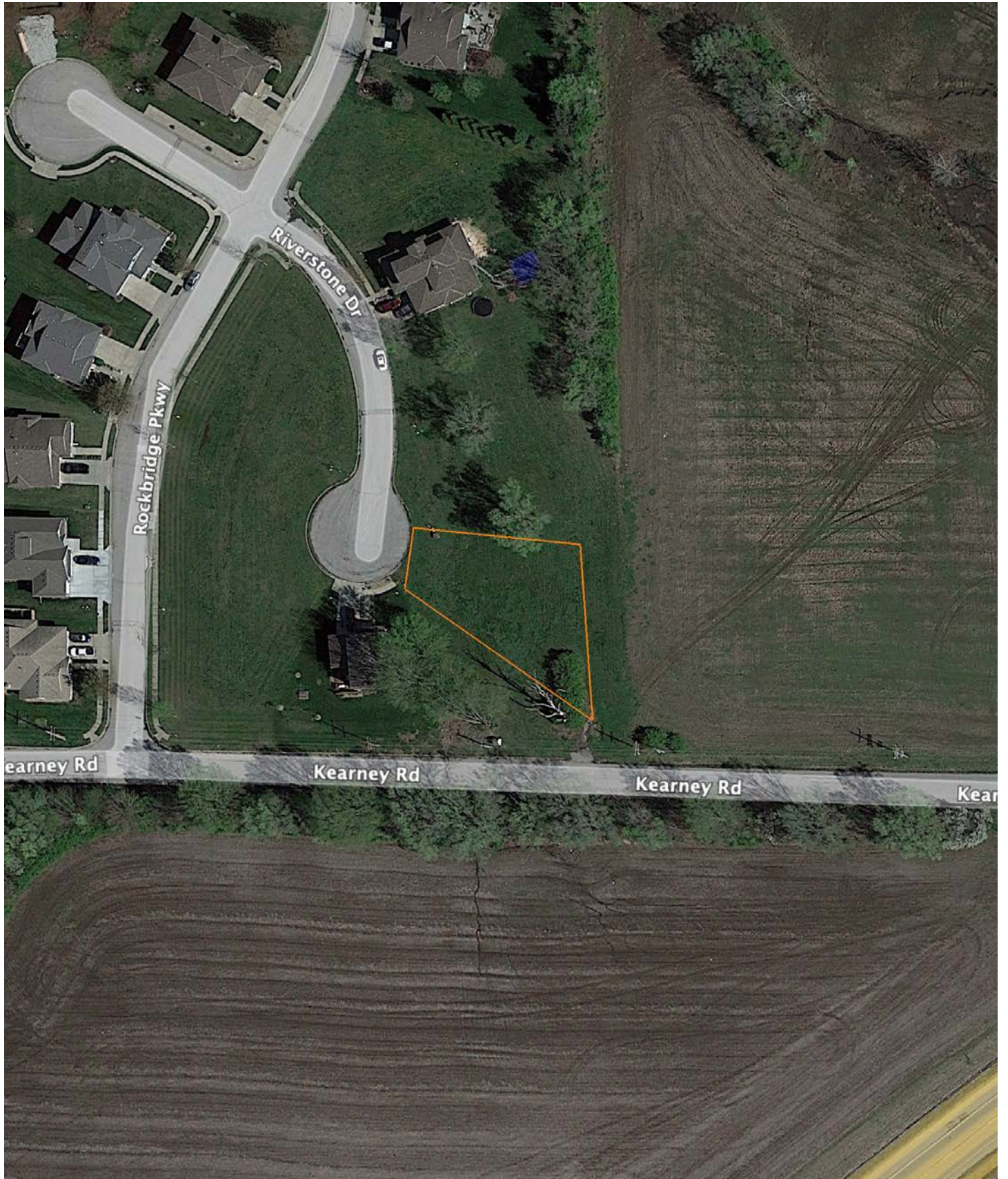
QUIET CUL-DE-SAC



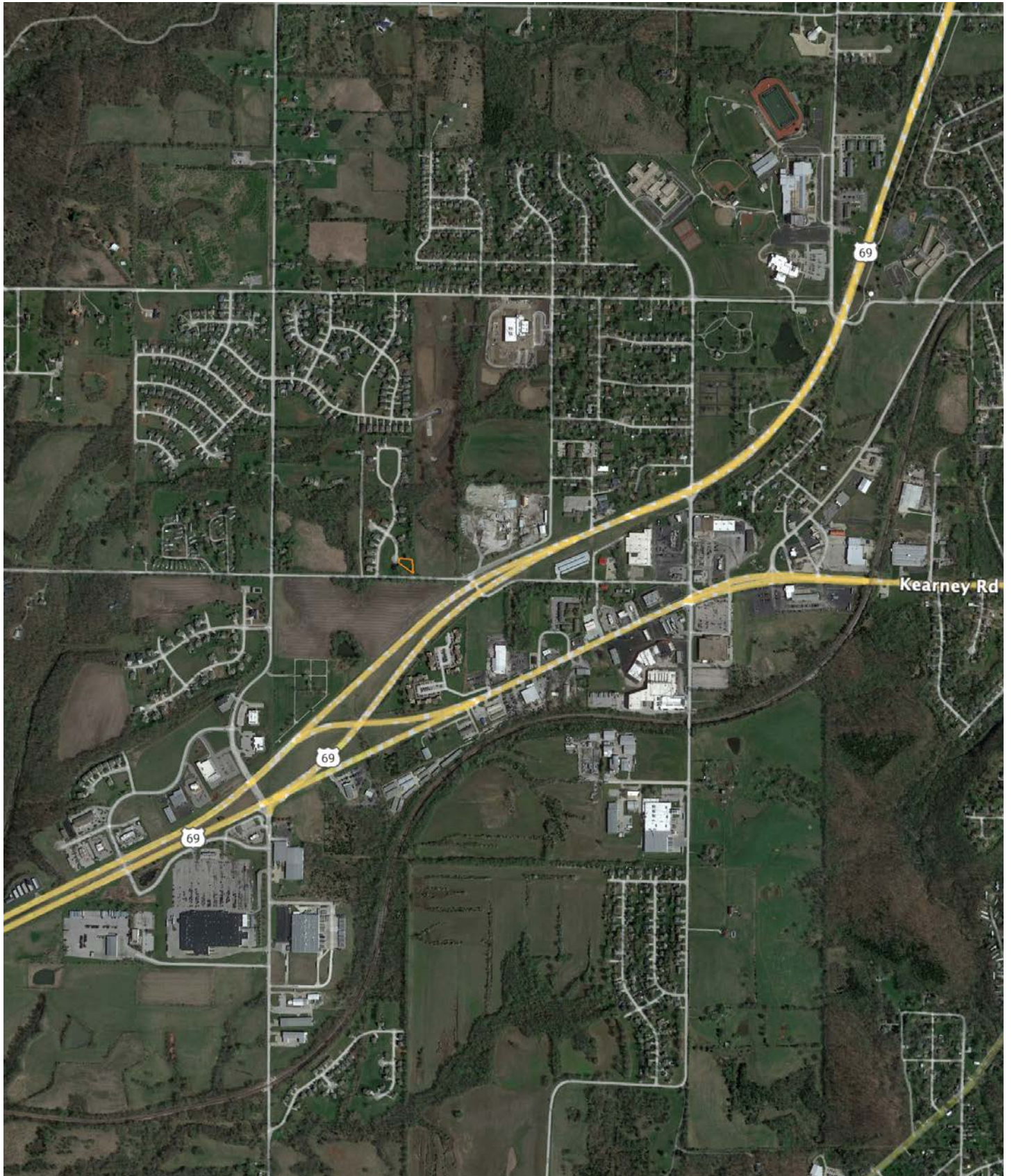
BRAND NEW 6 FT. PRIVACY FENCE



AERIAL MAP



OVERVIEW MAP



AGENT CONTACT

Scott's passion for the outdoors is fueled by whitetail, turkey and waterfowl. A member of various duck clubs for over 25 years, Scott has extensive waterfowl knowledge and wetland management skills. When he's not hunting, you can find Scott on the water - fly fishing or tournament bass fishing.

Born in Kansas City, Missouri, Scott graduated from Lee's Summit High School, and went on to earn a degree in Speech Communication from the University of Missouri. Prior to joining Midwest Land Group, he built a career in medical sales serving hospitals, outpatient clinics and ambulatory surgery centers, and earned the President's Club award on multiple occasions. This experience led this agent to become detail-oriented, solutions-driven, and proficient in managing large and complicated business deals, which comes in handy as a land agent.

Scott is an active member of Our Lady of the Presentation church and school; a member of Ducks Unlimited, Delta Waterfowl, the National Wild Turkey Federation, and Lakewood Bass Fishing Club; and is also a coach for the Lee's Summit Softball Association. He and his wife, Stacie, enjoy cheering on their daughters, Ava and Lyla, who keep them busy with sports and activities.



SCOTT VENTIMIGLIA, LAND AGENT
816.695.4294
SVentimiglia@MidwestLandGroup.com



MidwestLandGroup.com

This property is being offered by Midwest Land Group, LLC. 913.674.8010. All information provided by Midwest Land Group, LLC or their agents was acquired from sources deemed accurate and reliable, however we do not warrant its accuracy or completeness. Midwest Land Group, LLC assumes no liability for error, omission or investment results. Midwest Land Group, LLC. Licensed in Arkansas, Illinois, Iowa, Kansas, Minnesota, Missouri, Nebraska, Oklahoma, South Dakota, Texas, and Wisconsin.