

MIDWEST LAND GROUP PRESENTS

14.8 ACRES IN

OKLAHOMA COUNTY OKLAHOMA



MidwestLandGroup.com

MIDWEST LAND GROUP IS HONORED TO PRESENT

WOODED BUILD SITE NEAR OKC METRO – TRACT 4

Tract 4 of 4. This beautiful undeveloped property is located in eastern Oklahoma County and features four, 15 +/- acre parcels for you to choose from. Gently rolling topography with an abundance of mature timber and wildlife makes this the ideal place to build your dream home. This property allows for a short commute to

the OKC metro with quick access to either the Turner Turnpike or Kickapoo Turnpike via newly re-surfaced blacktop roads. Contact Blake Bechtel (580) 363-6870 and come to tour all four parcels and discover the seclusion and privacy this property has to offer.



PROPERTY FEATURES

PRICE: **\$234,573** | COUNTY: **OKLAHOMA** | STATE: **OKLAHOMA** | ACRES: **14.8**

- Seclusion and privacy
- Build your dream home
- Beautiful views
- Mature timber
- Wildlife
- Excellent location
- Freshly re-surfaced blacktop roads
- Short drive to OKC metro
- Utilities available
- Quick access to Turner and Kickapoo Turnpikes



SECLUSION AND PRIVACY



BUILD YOUR DREAM HOME



BEAUTIFUL VIEWS



MATURE TIMBER



WILDLIFE



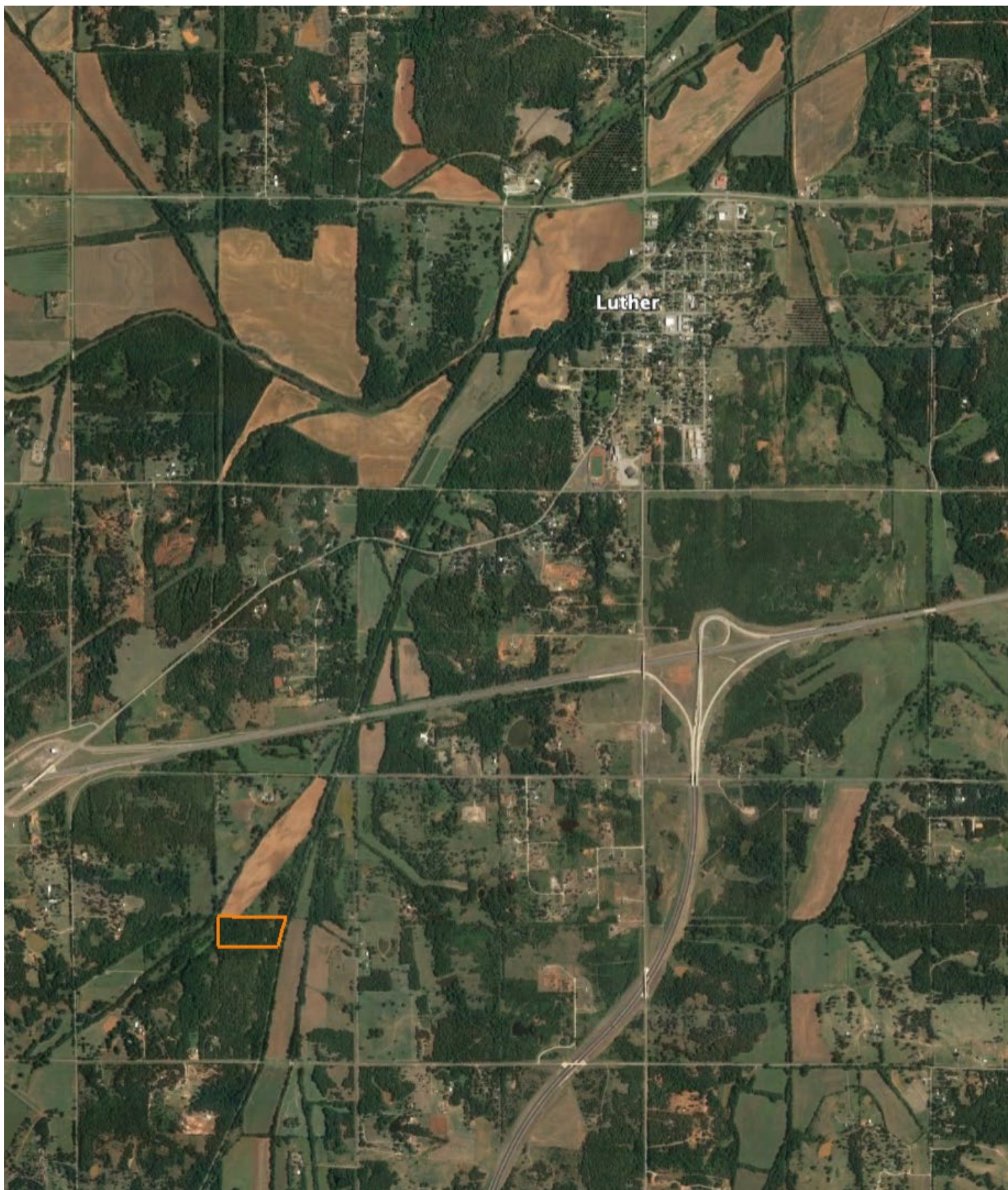
ADDITIONAL PHOTOS



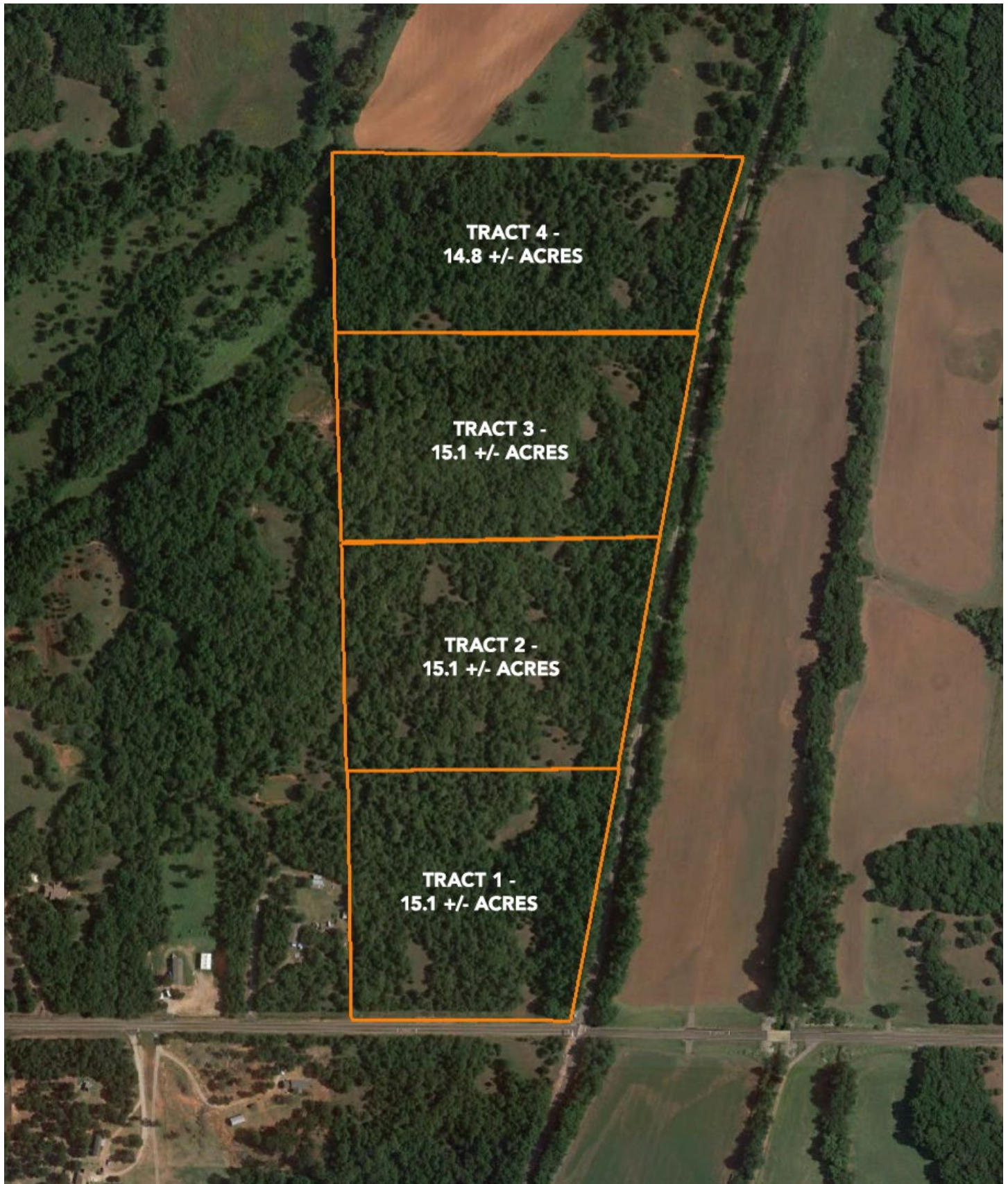
AERIAL MAP



OVERVIEW MAP



ALL TRACTS AVAILABLE



AGENT CONTACT

Born and raised in north central Oklahoma, Blake Bechtel has always had a passion for agriculture and the outdoors. Growing up, Blake spent his summers working on a family friend's row crop farm and worked year-round tending to his own livestock projects through 4H and FFA. After graduating from Blackwell High School, Blake went on to study business administration at Oklahoma State University, where he was a member of the Alpha Gamma Rho fraternity. While in college, he not only met his wife, Natalie, he also met lifelong friends that ignited his passion for learning and understanding the art of hunting trophy whitetails.

After college, Blake moved to Edmond, Oklahoma, where he began his career in the oil and gas industry. Having spent the majority of his career providing services to oil and gas producers, he understands the importance of client relationships and is focused on always doing what's best for his customer. Today, Blake still resides in Edmond with his wife and four daughters Kyler, Tegan, Ainsley and Berkley. He serves as an ambassador for the Folds of Honor Oklahoma City Chapter, coaches little league soccer, and enjoys hunting and playing golf. Having a well-rounded background in agriculture and hunting properties, coupled with his experiences in the oil and gas industry, Blake understands the importance and value of land transactions and is committed to serving his clients with the utmost care and commitment.



BLAKE BECHTEL,
LAND AGENT

580.363.6870

BBechtel@MidwestLandGroup.com



MidwestLandGroup.com

This property is being offered by Midwest Land Group, LLC. 913.674.8010. All information provided by Midwest Land Group, LLC or their agents was acquired from sources deemed accurate and reliable, however we do not warrant its accuracy or completeness. Midwest Land Group, LLC assumes no liability for error, omission or investment results. Midwest Land Group, LLC. Licensed in Arkansas, Illinois, Iowa, Kansas, Minnesota, Missouri, Nebraska, Oklahoma, South Dakota, Tennessee, Texas, Wisconsin, and Wyoming.