

MIDWEST LAND GROUP PRESENTS

11.5 ACRES IN

CRAIGHEAD COUNTY ARKANSAS



MidwestLandGroup.com

MIDWEST LAND GROUP IS HONORED TO PRESENT

BUILDABLE ACREAGE ON CROWLEY'S RIDGE

Looking for a place to build your dream home on Crowley's Ridge? This 11.5 +/- acres just 6.5 miles north of downtown Jonesboro could be the spot for you! Located less than 1/2 mile off Highway 141, this tract is in an ideal location for anyone wanting to enjoy the peace and quiet of country living while still having convenient access to town. The entire north boundary borders Gambill Rd for approximately 375 feet, giving the property excellent access. Power,

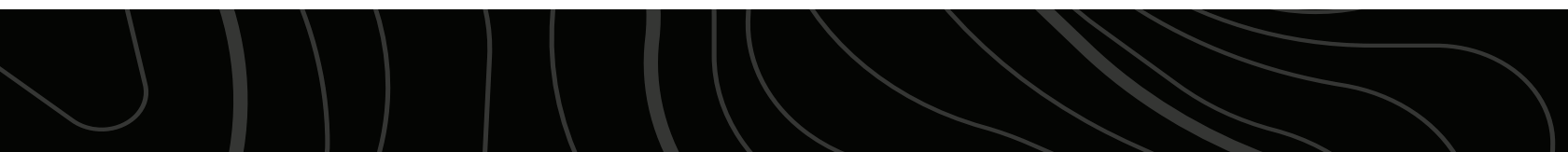
fiber optic, and rural water are all accessible from the county road as well. There are numerous build site options as the tract lays mostly level from one end to the other. This would be a great place for anyone who has horses, wants to run cattle or other livestock, or just have some room to enjoy not being right on top of your neighbor. For more information on this listing, or to schedule a tour, contact Michael Rook with Midwest Land Group.



PROPERTY FEATURES

PRICE: **\$175,000** | COUNTY: **CRAIGHEAD** | STATE: **ARKANSAS** | ACRES: **11.5**

- 11.5 +/- acres
- Approximately 375' of Gambill Road frontage
- Less than 1/2 mile off Highway 141
- 6.5 miles north of downtown Jonesboro
- Power
- Fiber optic
- Rural water
- Run horses, cattle, etc.
- History of baling for hay
- Several build site options



11.5 +/- ACRES



ADDITIONAL PHOTOS



AERIAL MAP



©2024 AgriData, Inc.

Boundary Center: 35° 56' 21.85, -90° 42' 6.11

0ft 284ft 568ft

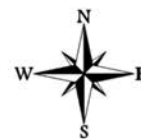


Maps Provided By:



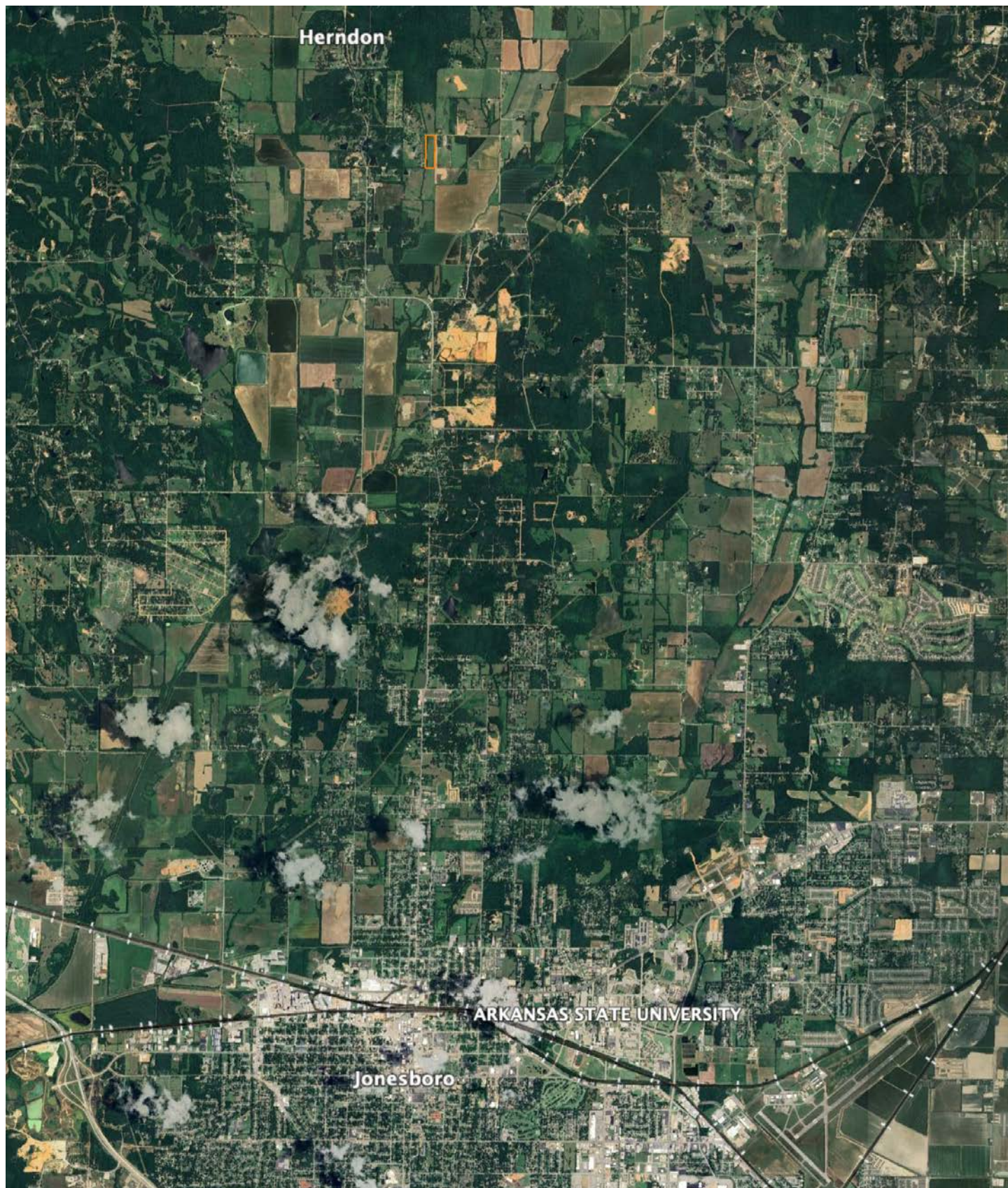
CUSTOMIZED ONLINE MAPPING
© AgriData, Inc. 2023 www.AgriDataInc.com

7-15N-4E
Craighead County
Arkansas



2/8/2024

OVERVIEW MAP



AGENT CONTACT

Actions speak louder than words. That's what Michael Rook believes to be the key factor to his success. Born in Jonesboro, Arkansas, he grew up hearing this phrase preached by his parents so much that it became ingrained in his life philosophy. Michael grew up in the Arkansas Delta surrounded by rice, bean, corn, and cotton farms—some of which he worked on in his youth. He attended Valley View High School and Arkansas State University before going to work in the natural gas distribution industry. After a travel-extensive career in natural gas, Michael longed to plant his roots back in the dirt he grew up on, and find a career that capitalized on his passion for the outdoors.

At Midwest Land Group, he's able to combine that passion with his extensive local market knowledge to see others achieve their goals of land ownership. Michael pours himself into every transaction as if it were his own. Getting a new client is easy, but he knows that it takes honesty and integrity to keep a client, and you can rest assured in that. He doesn't tell clients he'll give them 100%; he proves it. When Michael's not working, you can find him hunting all kinds of game, fishing, golfing or skiing. He resides in Jonesboro, Arkansas, with his wife, Anna, and daughter, Kingston.



MICHAEL ROOK, LAND AGENT
816.718.7201
MRook@MidwestLandGroup.com



MidwestLandGroup.com

This property is being offered by Midwest Land Group, LLC. 913.674.8010. All information provided by Midwest Land Group, LLC or their agents was acquired from sources deemed accurate and reliable, however we do not warrant its accuracy or completeness. Midwest Land Group, LLC assumes no liability for error, omission or investment results. Midwest Land Group, LLC. Licensed in Arkansas, Illinois, Iowa, Kansas, Minnesota, Missouri, Nebraska, Oklahoma, South Dakota, Texas, and Wisconsin.