

MIDWEST LAND GROUP PRESENTS

6.5 ACRES IN

# CONWAY COUNTY ARKANSAS



[MidwestLandGroup.com](http://MidwestLandGroup.com)



MIDWEST LAND GROUP IS HONORED TO PRESENT

# BEAUTIFUL BUILD-READY HOMESITE

---

Less than 10 minutes north of Interstate 40 in the Hill Creek community in Conway County, this beautiful acreage is ready for construction. The 6.5 +/- acre tract is near the Hill Creek Estates subdivision and fronted by the county-maintained Caroline Loop Road. The property is ideally located within easy commuter distance of Conway or the Little Rock Metro area. Utilities can be found on or near the property, and nearly the entire property is level and suitable for building. Approximately half of the property was recently cleared of small trees and brush, with the remaining trees being

a hardwood mix. There is a pond with clean, clear water on the north side of the property which is now easily accessible due to the improvements. Deer can be found frequenting the property, along with other small game animals. Recreational opportunities abound, as the property is only 3 miles from the public access to Brewer Lake; and other attractions such as the Arkansas River, Petit Jean Mountain, Greers Ferry Lake, and the Ozark National Forest are all within an hour's drive. Viewing is by appointment only, so contact CaLyn Zachary at (501) 483-5007 to schedule today!





# PROPERTY FEATURES

PRICE: **\$89,900** | COUNTY: **CONWAY** | STATE: **ARKANSAS** | ACRES: **6.5**

- 6.5 +/- acres
- Numerous build sites
- County road frontage
- Utilities near the property
- Deer and small game
- Mostly flat topography
- Pond
- Partially fenced
- Outside city limits
- 10 miles to Morrilton
- 15 miles to Conway





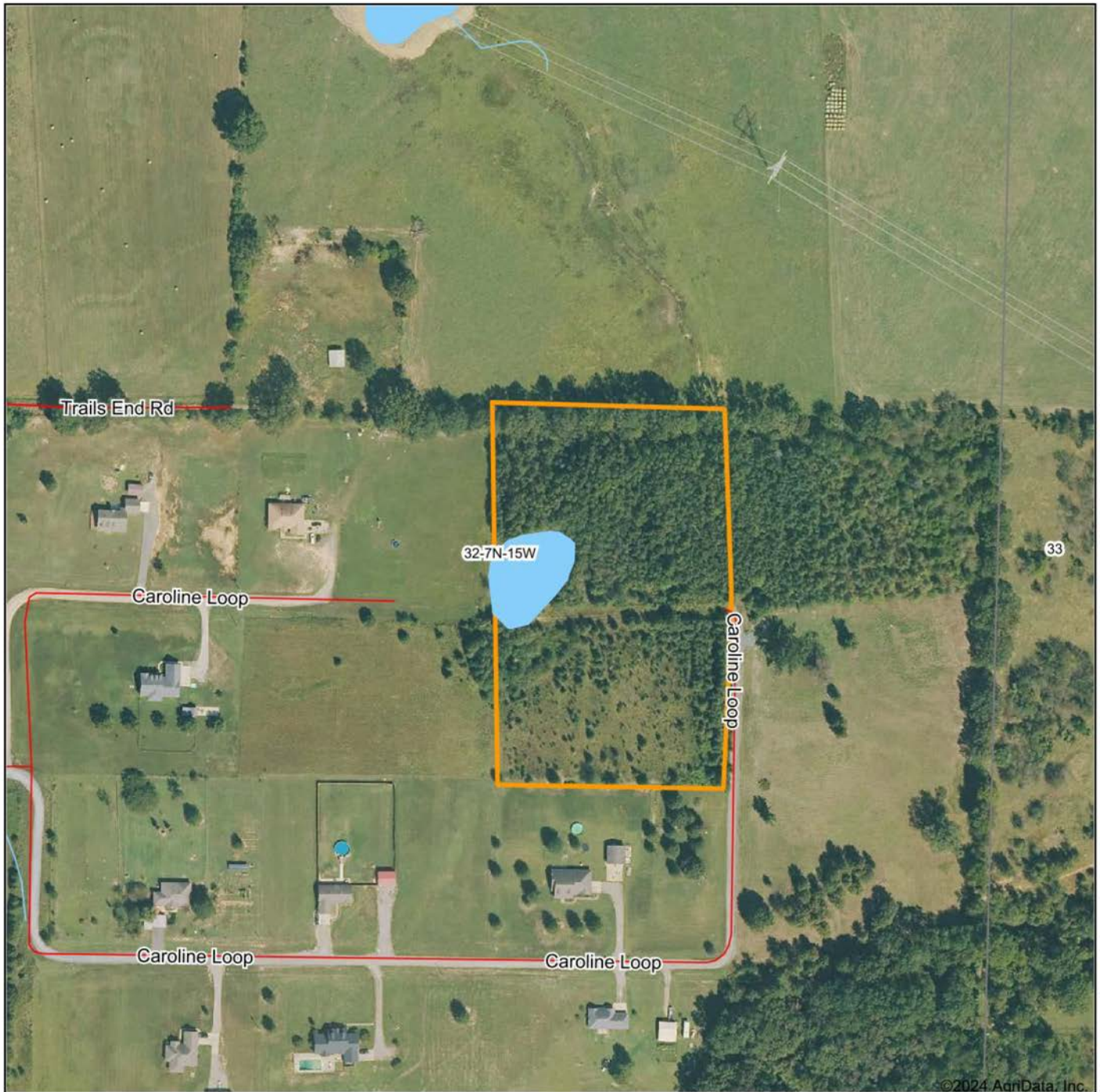
6.5 +/- ACRES

---





# AERIAL MAP



Maps Provided By:



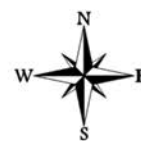
© AgriData, Inc. 2023

www.AgridataInc.com

Boundary Center: 35° 12' 12.28, -92° 36' 45.27

**32-7N-15W**  
**Conway County**  
**Arkansas**

0ft 278ft 556ft



6/24/2024



# AERIAL OVERVIEW MAP



©2024 AgriData, Inc.



Maps Provided By:



© AgriData, Inc. 2023 www.AgriDataInc.com

Boundary Center: 35° 12' 12.28, -92° 36' 45.27

**32-7N-15W**  
**Conway County**  
**Arkansas**

0ft 3529ft 7058ft

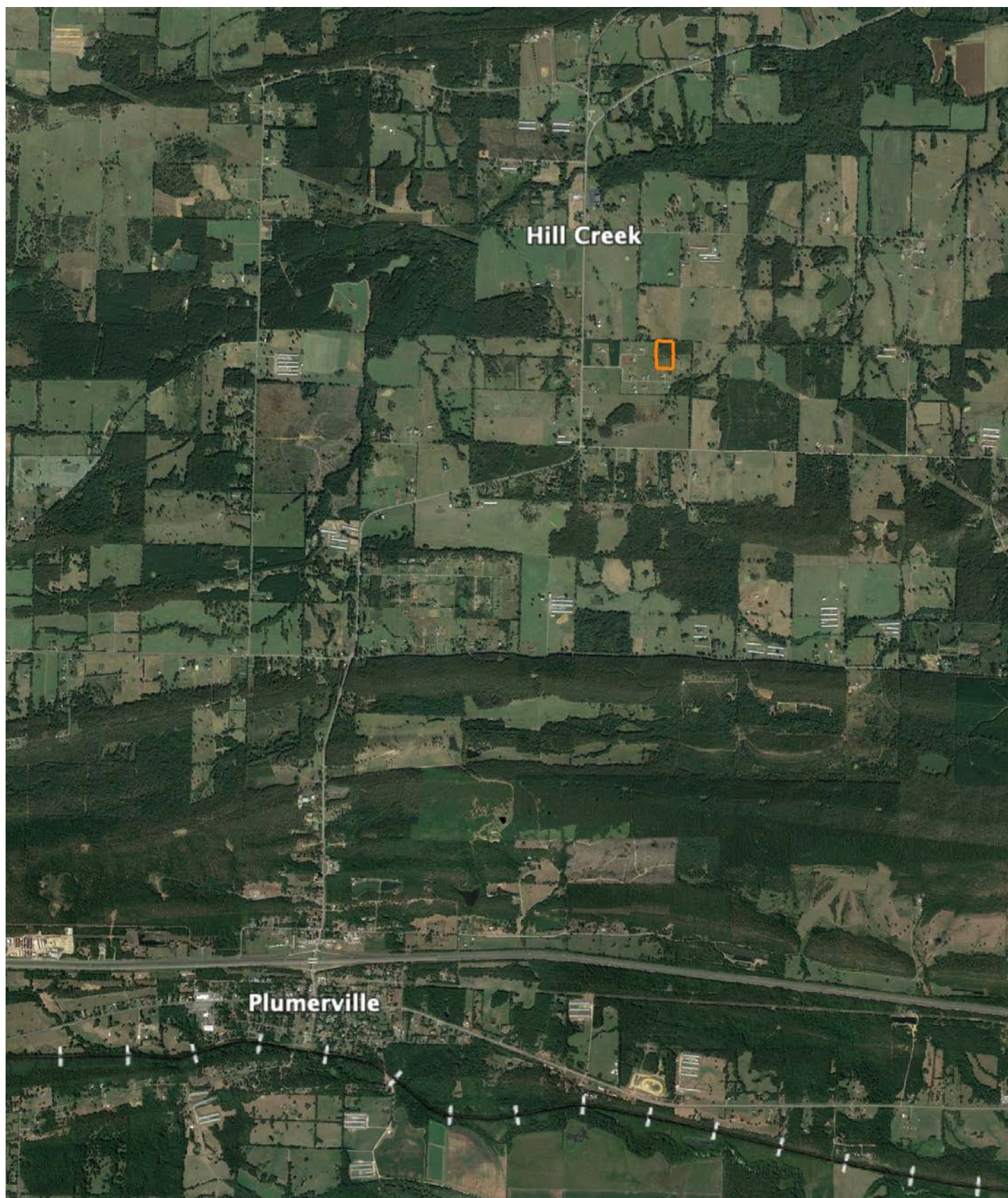


6/24/2024



# OVERVIEW MAP

---





# AGENT CONTACT

---

Former collegiate baseball player Ca'Lyn Zachary knows what it means to hustle, possess a strong work ethic, and be fully dedicated. Born in Conway, Arkansas, Ca'Lyn graduated from Morrilton High School, earned a Bachelor's in Kinesiology from the University of Central Arkansas and a Master's from Arkansas Tech University. A lifelong resident of Central Arkansas, Ca'Lyn knows the land inside and out. He's been hunting and fishing the Arkansas River Bottoms his entire life, working with a row crop and cattle farm and has experience in the broiler industry, both of the latter in Plumerville, Arkansas.

Ca'Lyn spent 10 years with Coca Cola Enterprises in retail sales, business development, and finance prior to obtaining his graduate degree. Afterward, he obtained certification and started his own business as a strength and conditioning specialist for scholastic athletes. Each of these roles prepped him perfectly for a career in land real estate, teaching him how to be detail-oriented, respectful, communicative, accessible, customer-focused, energetic, and enthusiastic when it comes to helping people reach their goals and creating a seamless transaction.

A man of faith, Ca'Lyn is a member of the Knights of Columbus where he serves as Chancellor. When he's not working, this outdoors enthusiast can be found spending as much time as possible hunting and fishing or coaching his sons' baseball teams. Ca'Lyn lives in Plumerville, Arkansas, with his wife, Summer, and teenage boys, JD and Carson.



**CALYN ZACHARY,**

LAND AGENT

**501.483.5007**

[CZachary@MidwestLandGroup.com](mailto:CZachary@MidwestLandGroup.com)



## MidwestLandGroup.com

This property is being offered by Midwest Land Group, LLC. 913.674.8010. All information provided by Midwest Land Group, LLC or their agents was acquired from sources deemed accurate and reliable, however we do not warrant its accuracy or completeness. Midwest Land Group, LLC assumes no liability for error, omission or investment results. Midwest Land Group, LLC. Licensed in Arkansas, Illinois, Iowa, Kansas, Missouri, Nebraska, Oklahoma, South Dakota, and Wisconsin.