

MIDWEST LAND GROUP PRESENTS

24 ACRES IN

---

# WARREN COUNTY IOWA



[MidwestLandGroup.com](http://MidwestLandGroup.com)

MIDWEST LAND GROUP IS HONORED TO PRESENT

# HOBBY FARM WITH INCOME, HUNTING, AND BEAUTIFUL BUILDING SITE

Midwest Land Group is proud to present this 24 +/- acre farm near Lacona, Iowa. This beautiful multi-purpose farm on blacktop has something for everyone! It has a gorgeous build site with amazing views to the west. The farm has a large 30'x50' barn that would be great for all your livestock needs. A 40'x80' pole shed with approximately 80 percent concrete to store all your farming equipment to keep them safe from the elements. The buildings have rural water and electricity.

The farm has great quality fencing with two separate pasture areas to rotate livestock. The farm also has a stocked pond for all your fishing needs. With a preferred location/commuting distance from Des Moines, a beautiful approved building site, blacktop, income, outbuildings for storage and livestock, a stocked pond, and excellent fencing throughout. The farm is sure to have a lot of activity from potential buyers. Call Dennis Williams today at (515) 739-3053 for your private tour.





# PROPERTY FEATURES

PRICE: **\$299,000** | COUNTY: **WARREN** | STATE: **IOWA** | ACRES: **24**

- 24 +/- acres in Warren County
- 39 miles south of Des Moines, Iowa
- 1 mile north of Lacona, Iowa
- Hobby farm
- Beautiful build site
- 40'x80' pole shed with 80 percent concrete
- 30'x50' pole shed with 18' lean-to, great for your livestock needs
- 2 separate pasture areas to rotate livestock
- Rural water and electricity at buildings
- Blacktop access
- Rolling terrain with beautiful views in every direction
- Excellent fencing
- Peaceful and private
- Large stocked pond
- Call listing agent for private showing
- Must be pre-approved





24 +/- ACRES

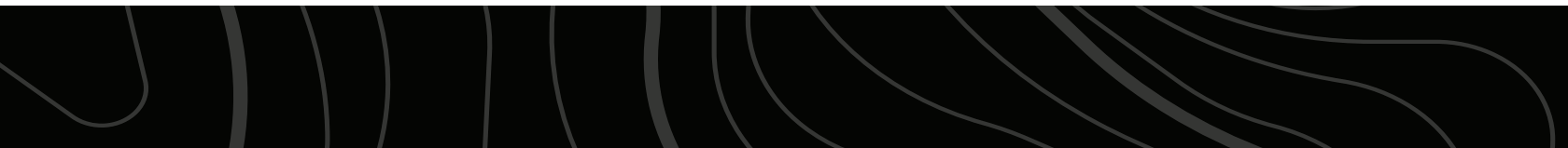
---





# MIXTURE OF PASTURE AND TILLABLE

---





# LARGE STOCKED POND

---



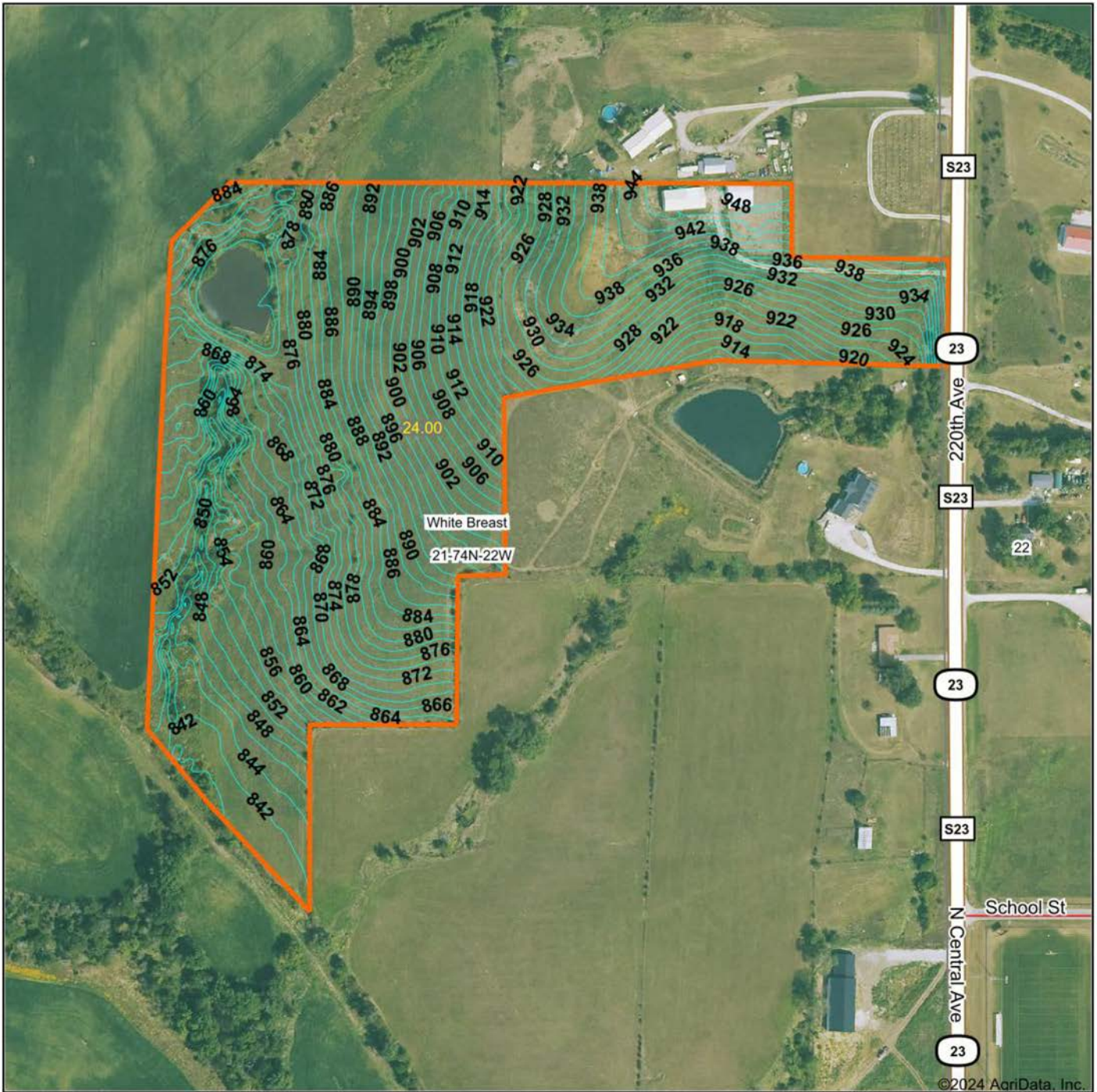
# 2 LARGE POLE SHEDS

---





# AERIAL MAP



©2024 AgriData, Inc.



Maps Provided By:



© AgriData, Inc. 2023 www.AgridataInc.com

Source: USGS 3 meter dem

Interval(ft): 2.0

Min: 838.1

Max: 950.0

Range: 111.9

Average: 890.9

Standard Deviation: 31.14 ft

0ft 309ft 617ft



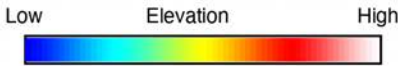
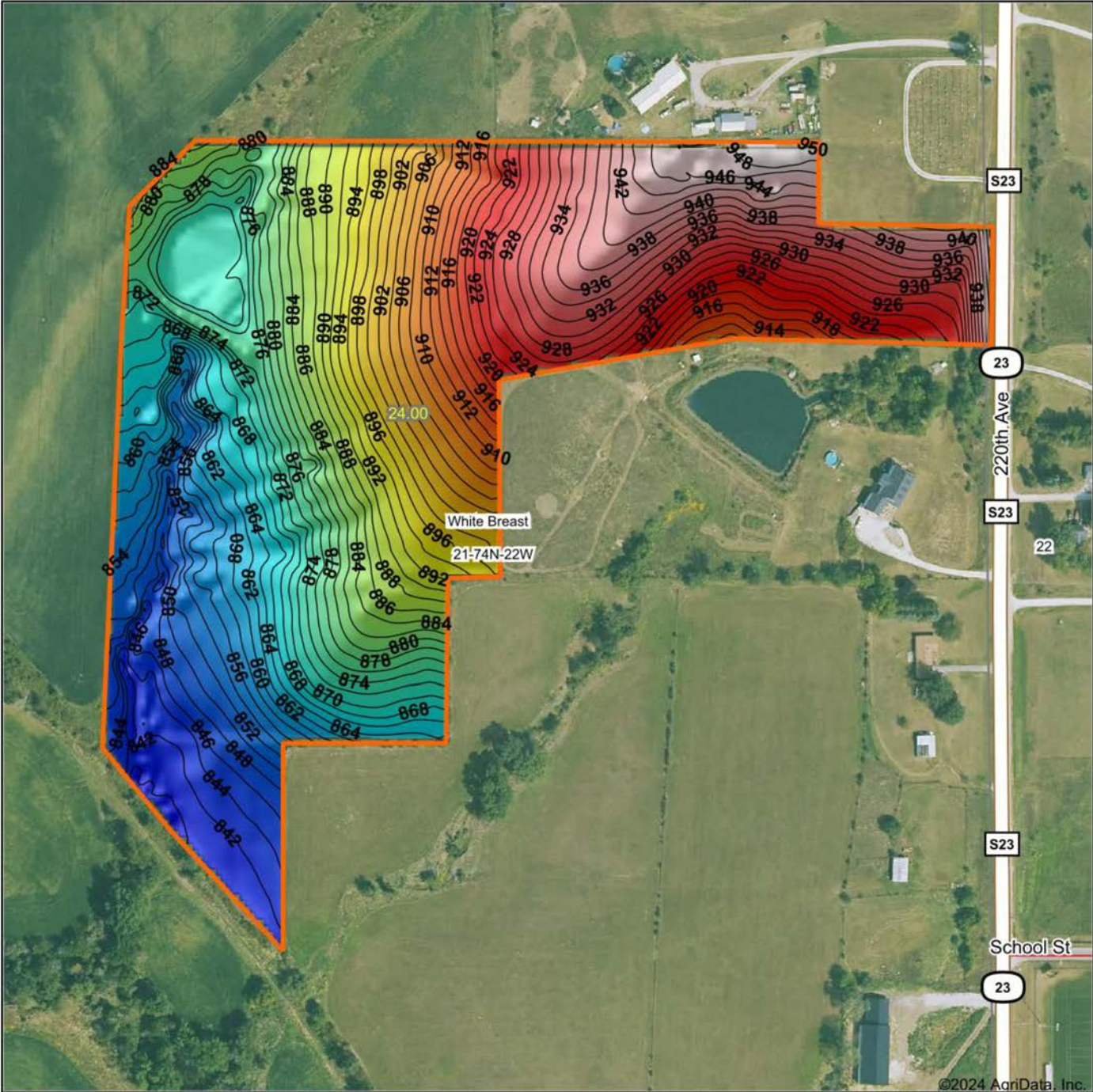
3/6/2024

21-74N-22W  
Warren County  
Iowa

Boundary Center: 41° 11' 48.78, -93° 23' 18.21

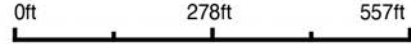


# HILLSHADE MAP



Maps Provided By:  
**surety**  
 CUSTOMIZED ONLINE MAPPING  
 © AgriData, Inc. 2023 www.AgriDataInc.com

Source: USGS 3 meter dem  
 Interval(ft): 2  
 Min: 838.1  
 Max: 950.0  
 Range: 111.9  
 Average: 890.9  
 Standard Deviation: 31.14 ft



3/6/2024

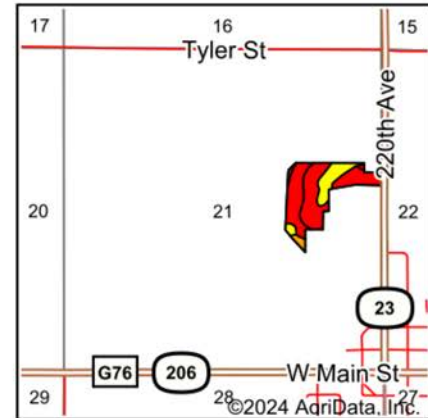
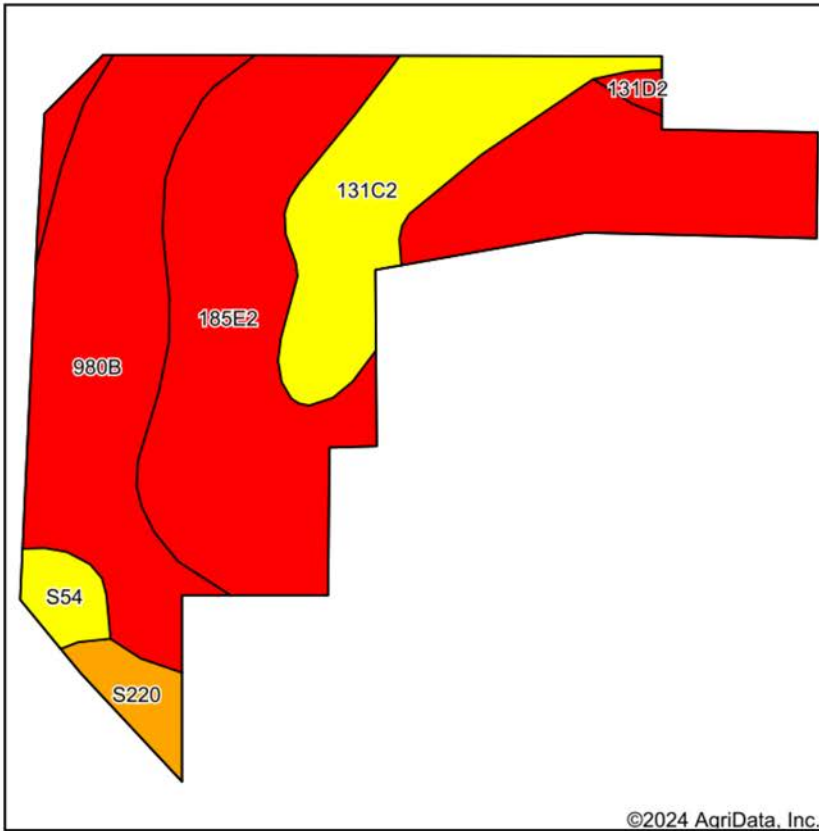
**21-74N-22W**  
**Warren County**  
**Iowa**

Boundary Center: 41° 11' 48.78, -93° 23' 18.21

©2024 AgriData, Inc.



# SOIL MAP



State: **Iowa**  
 County: **Warren**  
 Location: **21-74N-22W**  
 Township: **White Breast**  
 Acres: **24**  
 Date: **3/6/2024**



Maps Provided By:  
  
 CUSTOMIZED ONLINE MAPPING  
 © AgriData, Inc. 2023 www.AgriDataInc.com



Soils data provided by USDA and NRCS.

©2024 AgriData, Inc.

Area Symbol: IA181, Soil Area Version: 29

| Code                    | Soil Description  | Acres | Percent of field | CSR2 Legend | Non-Irr Class *c | *i Corn Bu  | *i Soybeans Bu | CSR2**      | CSR         | *n NCCPI Overall | *n NCCPI Corn  | *n NCCPI Soybeans |                |
|-------------------------|---|-------|------------------|-------------|------------------|-------------|----------------|-------------|-------------|------------------|----------------|-------------------|----------------|
| 185E2                   | Bauer silt loam, 14 to 18 percent slopes, moderately eroded                   | 12.01 | 50.0%            |             | Vlle             | 115.2       | 33.4           | 8           | 10          | 43               | 43             | 24                |                |
| 980B                    | Gullied land-Ely-Colo, occasionally flooded, complex, 2 to 5 percent slopes   | 6.36  | 26.5%            |             | Vlle             | 88.0        | 25.5           | 42          | 25          | 10               | 10             | 9                 |                |
| 131C2                   | Pershing silt loam, 5 to 9 percent slopes, moderately eroded                  | 4.13  | 17.2%            |             | Ille             | 80.0        | 23.2           | 62          | 50          | 68               | 68             | 51                |                |
| S220                    | Nodaway silt loam, heavy till, 0 to 2 percent slopes, occasionally flooded    | 0.72  | 3.0%             |             | Ilw              | 0.0         | 0.0            | 77          |             | 87               | 87             | 83                |                |
| S54                     | Zook silty clay loam, heavy till, 0 to 2 percent slopes, occasionally flooded | 0.61  | 2.5%             |             | Ilw              | 0.0         | 0.0            | 68          |             | 74               | 74             | 67                |                |
| 131D2                   | Pershing silt loam, 9 to 14 percent slopes, moderately eroded                 | 0.17  | 0.7%             |             | IVe              | 80.0        | 23.2           | 37          | 40          | 69               | 69             | 57                |                |
| <b>Weighted Average</b> |   |       |                  |             |                  | <b>6.01</b> | <b>95.3</b>    | <b>27.6</b> | <b>30.1</b> | <b>-</b>         | <b>*n 40.8</b> | <b>*n 40.8</b>    | <b>*n 27.8</b> |

\*\*IA has updated the CSR values for each county to CSR2.

\*- CSR weighted average cannot be calculated on the current soils data, use prior data version for csr values. \*i Yield data provided by the ISPAID Database version 8.1.1 developed by IA State University.

\*n: The aggregation method is "Weighted Average using all components"

\*c: Using Capabilities Class Dominant Condition Aggregation Method



# OVERVIEW MAP

---





# AGENT CONTACT

---

Dennis Williams has the determination and grit it takes to get the job done, which was instilled in him at a young age and evidenced through his 31 year career in logistics. Dennis grew up in Rochester, MN, where he graduated from Mayo High School and Rochester Community College. After buying and selling several of his own rec farms, Dennis and his family moved from Minnesota to pursue his dream of selling land in Iowa.

At Midwest Land Group, buyers and sellers alike know they can count on Dennis to get the job done and do it right. This agent prides himself on being a good listener who works with the utmost honesty and integrity. He relishes in the fact that many lifelong friendships are made through real estate transactions and looks forward to creating lasting memories with each client.

Dennis is passionate about pursuing whitetails, having even owned his own whitetail consulting business. He had his hunts filmed and shared on Hunter's Specialties Primetime videos, and afterward was hired as a pro staff member on the TV show Driven with Pat and Nicole. When he's not helping clients achieve their land real estate needs, Dennis enjoys hunting and fishing, and spending time with his family, including wife, Janet, son Daniel, and daughter Brooklyn.



**DENNIS WILLIAMS,**

LAND AGENT

**515.739.3053**

DWilliams@MidwestLandGroup.com



---

**MidwestLandGroup.com**

This property is being offered by Midwest Land Group, LLC. 913.674.8010. All information provided by Midwest Land Group, LLC or their agents was acquired from sources deemed accurate and reliable, however we do not warrant its accuracy or completeness. Midwest Land Group, LLC assumes no liability for error, omission or investment results. Midwest Land Group, LLC. Licensed in Arkansas, Illinois, Iowa, Kansas, Missouri, Nebraska, Oklahoma, South Dakota, and Wisconsin.