

MIDWEST LAND GROUP PRESENTS

39.1 ACRES IN

---

# DADE COUNTY MISSOURI



[MidwestLandGroup.com](http://MidwestLandGroup.com)



MIDWEST LAND GROUP IS HONORED TO PRESENT

# STUNNING 39 ACRES OF NATURAL PARADISE NEAR STOCKTON LAKE

---

Welcome to your own piece of paradise nestled in the heart of Dade County! This exceptional 39 +/- acre property offers the perfect blend of natural beauty, convenience, and endless possibilities for your dream home or outdoor retreat. Situated close to Stockton Lake and boasting county road frontage, this property is a rare gem waiting for its next owner to create their own personal oasis. This property is just a stone's throw away from Stockton Lake. Enjoy easy access to fishing, boating, and outdoor adventures while being surrounded by the seclusion of the Ozarks. The property is equipped with a newer well, ensuring a reliable and convenient source of water. Additionally, a sturdy foundation is already in place, complete with electricity ready for your new cabin or modular home. Ideal for nature lovers and hunters, this property features food plot locations that attract and sustain local wildlife. Whether you're an avid

hunter or simply enjoy observing nature, this feature is a significant bonus. A small creek meanders through the property a well creating an even more diverse habitat and providing an excellent water source for wildlife. With essential infrastructure in place, including the new well and foundation, this property is primed and ready for your vision. Whether you're looking to build your dream home or create a weekend escape, this land is a canvas awaiting your creativity.

Don't miss the opportunity to own this extraordinary 39 acre parcel in Dade County. The combination of location, diversity, and amenities makes it a rare find. Whether you're seeking a peaceful rural retreat or a hunting paradise, this property has it all. Contact us today to schedule a viewing and make your dreams a reality!





# PROPERTY FEATURES

PRICE: **\$249,000** | COUNTY: **DADE** | STATE: **MISSOURI** | ACRES: **39.1**

---

- Existing foundation
- Well
- Electricity
- Mature timber
- Lots of wildlife
- Private drive
- County road frontage
- Close to Stockton Lake
- Food plot locations
- Wet weather creek





39.1 +/- ACRES

---





# WELL & ELECTRIC IN PLACE

---



# EXISTING FOUNDATION

---





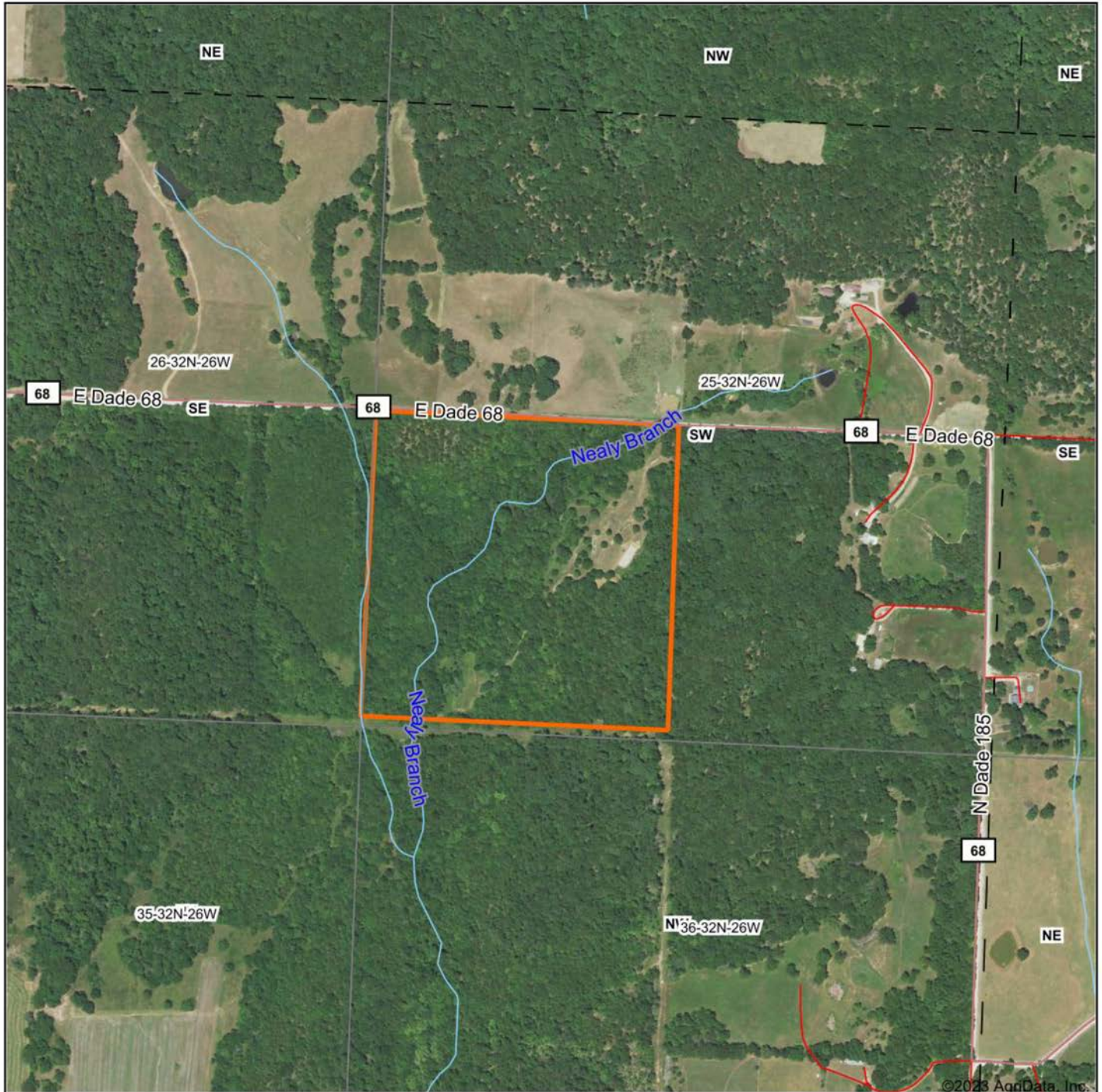
# MATURE TIMBER

---





# AERIAL MAP



Boundary Center: 37° 28' 32.72, -93° 44' 44.47

0ft 666ft 1333ft



Maps Provided By:



© AgriData, Inc. 2023

www.AgriDataInc.com

**25-32N-26W**  
**Dade County**  
**Missouri**



9/13/2023



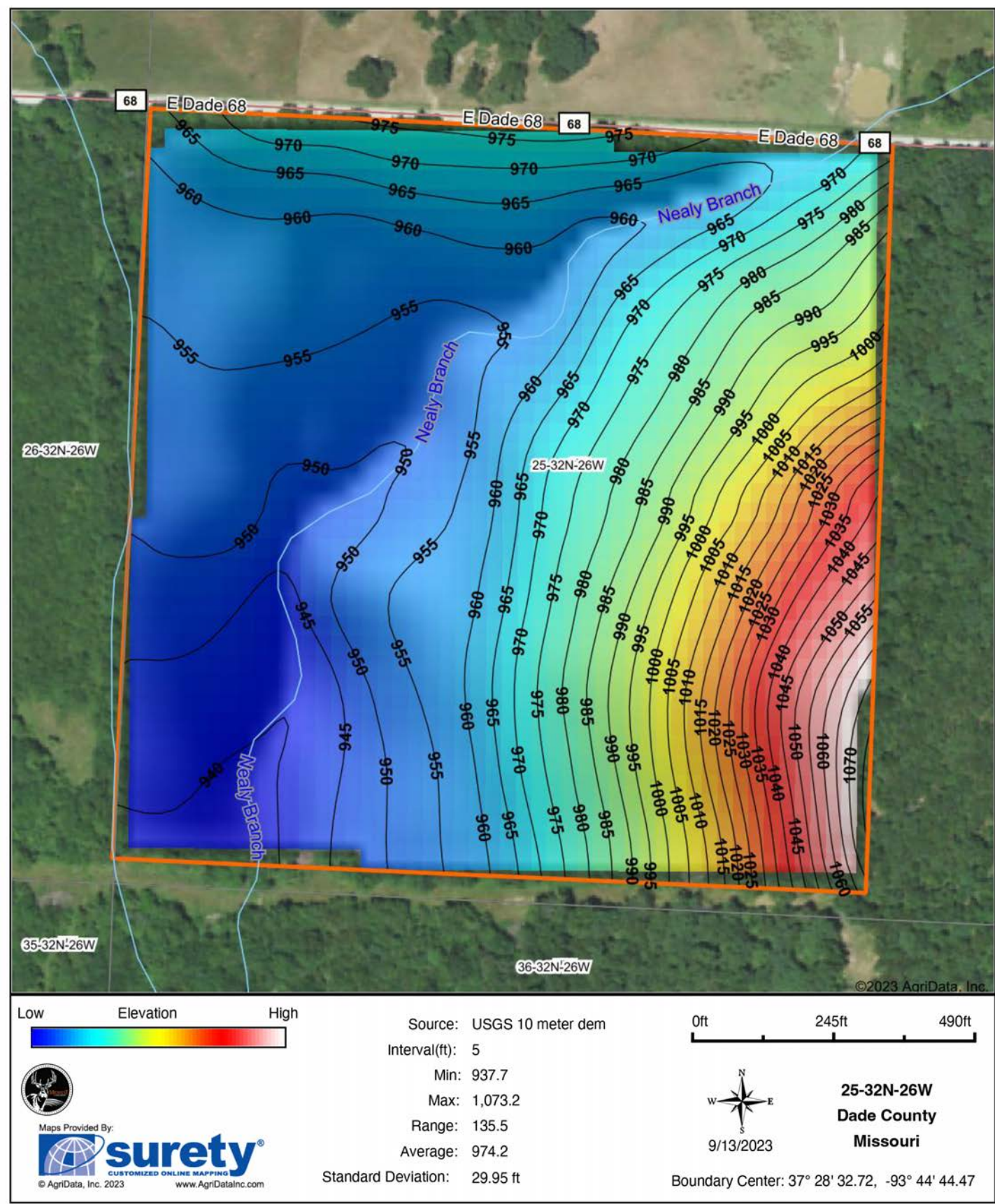
This topographic map shows a field with contour lines indicating elevation. The map is bounded by a red line. Key features include:

- Contour Lines:** Labeled with elevation values such as 940, 945, 950, 955, 960, 965, 970, 975, 980, 985, 990, 995, 1000, 1005, 1010, 1015, 1020, 1025, 1030, 1035, 1040, 1045, 1050, 1055, 1060, 1065, 1070, 1075, 1080, 1085, 1090, 1095, 1100, 1105, 1110, 1115, 1120, 1125, 1130, 1135, 1140, 1145, 1150, 1155, 1160, 1165, 1170, 1175, 1180, 1185, 1190, 1195, 1200, 1205, 1210, 1215, 1220, 1225, 1230, 1235, 1240, 1245, 1250, 1255, 1260, 1265, 1270, 1275, 1280, 1285, 1290, 1295, 1300, 1305, 1310, 1315, 1320, 1325, 1330, 1335, 1340, 1345, 1350, 1355, 1360, 1365, 1370, 1375, 1380, 1385, 1390, 1395, 1400, 1405, 1410, 1415, 1420, 1425, 1430, 1435, 1440, 1445, 1450, 1455, 1460, 1465, 1470, 1475, 1480, 1485, 1490, 1495, 1500, 1505, 1510, 1515, 1520, 1525, 1530, 1535, 1540, 1545, 1550, 1555, 1560, 1565, 1570, 1575, 1580, 1585, 1590, 1595, 1600, 1605, 1610, 1615, 1620, 1625, 1630, 1635, 1640, 1645, 1650, 1655, 1660, 1665, 1670, 1675, 1680, 1685, 1690, 1695, 1700, 1705, 1710, 1715, 1720, 1725, 1730, 1735, 1740, 1745, 1750, 1755, 1760, 1765, 1770, 1775, 1780, 1785, 1790, 1795, 1800, 1805, 1810, 1815, 1820, 1825, 1830, 1835, 1840, 1845, 1850, 1855, 1860, 1865, 1870, 1875, 1880, 1885, 1890, 1895, 1900, 1905, 1910, 1915, 1920, 1925, 1930, 1935, 1940, 1945, 1950, 1955, 1960, 1965, 1970, 1975, 1980, 1985, 1990, 1995, 2000, 2005, 2010, 2015, 2020, 2025, 2030, 2035, 2040, 2045, 2050, 2055, 2060, 2065, 2070, 2075, 2080, 2085, 2090, 2095, 2100, 2105, 2110, 2115, 2120, 2125, 2130, 2135, 2140, 2145, 2150, 2155, 2160, 2165, 2170, 2175, 2180, 2185, 2190, 2195, 2200, 2205, 2210, 2215, 2220, 2225, 2230, 2235, 2240, 2245, 2250, 2255, 2260, 2265, 2270, 2275, 2280, 2285, 2290, 2295, 2300, 2305, 2310, 2315, 2320, 2325, 2330, 2335, 2340, 2345, 2350, 2355, 2360, 2365, 2370, 2375, 2380, 2385, 2390, 2395, 2400, 2405, 2410, 2415, 2420, 2425, 2430, 2435, 2440, 2445, 2450, 2455, 2460, 2465, 2470, 2475, 2480, 2485, 2490, 2495, 2500, 2505, 2510, 2515, 2520, 2525, 2530, 2535, 2540, 2545, 2550, 2555, 2560, 2565, 2570, 2575, 2580, 2585, 2590, 2595, 2600, 2605, 2610, 2615, 2620, 2625, 2630, 2635, 2640, 2645, 2650, 2655, 2660, 2665, 2670, 2675, 2680, 2685, 2690, 2695, 2700, 2705, 2710, 2715, 2720, 2725, 2730, 2735, 2740, 2745, 2750, 2755, 2760, 2765, 2770, 2775, 2780, 2785, 2790, 2795, 2800, 2805, 2810, 2815, 2820, 2825, 2830, 2835, 2840, 2845, 2850, 2855, 2860, 2865, 2870, 2875, 2880, 2885, 2890, 2895, 2900, 2905, 2910, 2915, 2920, 2925, 2930, 2935, 2940, 2945, 2950, 2955, 2960, 2965, 2970, 2975, 2980, 2985, 2990, 2995, 3000, 3005, 3010, 3015, 3020, 3025, 3030, 3035, 3040, 3045, 3050, 3055, 3060, 3065, 3070, 3075, 3080, 3085, 3090, 3095, 3100, 3105, 3110, 3115, 3120, 3125, 3130, 3135, 3140, 3145, 3150, 3155, 3160, 3165, 3170, 3175, 3180, 3185, 3190, 3195, 3200, 3205, 3210, 3215, 3220, 3225, 3230, 3235, 3240, 3245, 3250, 3255, 3260, 3265, 3270, 3275, 3280, 3285, 3290, 3295, 3300, 3305, 3310, 3315, 3320, 3325, 3330, 3335, 3340, 3345, 3350, 3355, 3360, 3365, 3370, 3375, 3380, 3385, 3390, 3395, 3400, 3405, 3410, 3415, 3420, 3425, 3430, 3435, 3440, 3445, 3450, 3455, 3460, 3465, 3470, 3475, 3480, 3485, 3490, 3495, 3500, 3505, 3510, 3515, 3520, 3525, 3530, 3535, 3540, 3545, 3550, 3555, 3560, 3565, 3570, 3575, 3580, 3585, 3590, 3595, 3600, 3605, 3610, 3615, 3620, 3625, 3630, 3635, 3640, 3645, 3650, 3655, 3660, 3665, 3670, 3675, 3680, 3685, 3690, 3695, 3700, 3705, 3710, 3715, 3720, 3725, 3730, 3735, 3740, 3745, 3750, 3755, 3760, 3765, 3770, 3775, 3780, 3785, 3790, 3795, 3800, 3805, 3810, 3815, 3820, 3825, 3830, 3835, 3840, 3845, 3850, 3855, 3860, 3865, 3870, 3875, 3880, 3885, 3890, 3895, 3900, 3905, 3910, 3915, 3920, 3925, 3930, 3935, 3940, 3945, 3950, 3955, 3960, 3965, 3970, 3975, 3980, 3985, 3990, 3995, 4000, 4005, 4010, 4015, 4020, 4025, 4030, 4035, 4040, 4045, 4050, 4055, 4060, 4065, 4070, 4075, 4080, 4085, 4090, 4095, 4100, 4105, 4110, 4115, 4120, 4125, 4130, 4135, 4140, 4145, 4150, 4155, 4160, 4165, 4170, 4175, 4180, 4185, 4190, 4195, 4200, 4205, 4210, 4215, 4220, 4225, 4230, 4235, 4240, 4245, 4250, 4255, 4260, 4265, 4270, 4275, 4280, 4285, 4290, 4295, 4300, 43





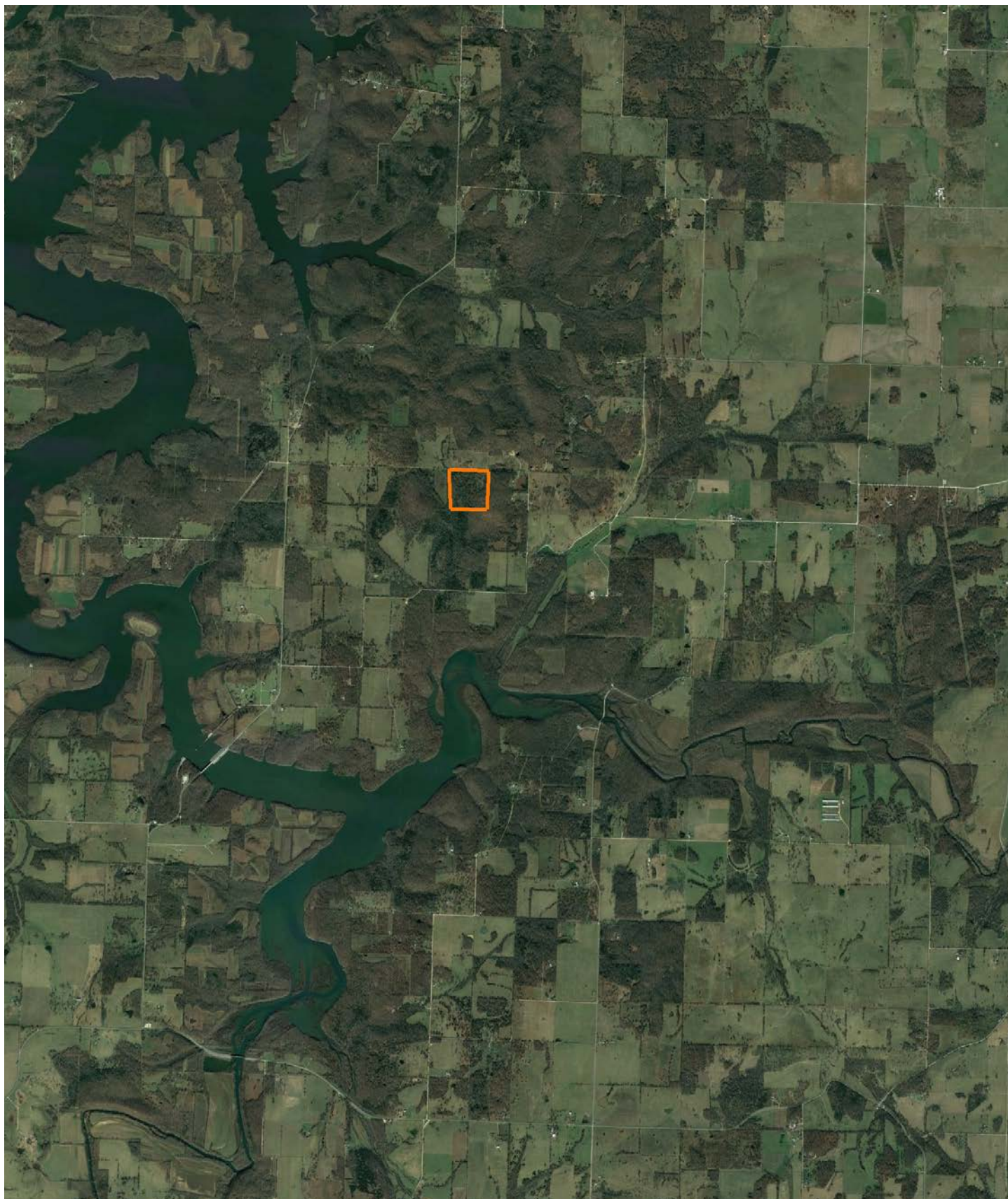
# HILLSHADE MAP





# OVERVIEW MAP

---





# AGENT CONTACT

---

Looking for land or selling a piece of property can be stressful or overbearing, but not if you're working with the right agent. Bjorn Wilkerson is all about making sure each client has an enjoyable experience from start to finish. A lifelong lover of the outdoors, Bjorn has a background in agriculture and a passion for all things outdoors. This includes hunting, fishing, camping, traveling, hiking, and land management, not to mention his personal favorites: spring turkey hunting, whitetail hunting, and bowfishing. Born in West Plains, Missouri, Bjorn attended Couch High School and graduated from Missouri State University—Springfield with a degree in Wildlife Management. Before coming to Midwest Land Group, he worked in agriculture and operations with Archer Daniels Midland (ADM), a human and animal nutrition company specializing in agricultural origination and processing, where he worked his way around the company, serving in a variety of positions, everything from trainee, plant manager, and recruiter to new manager development specialist and continuous improvement practitioner. Being a service to someone looking for hunting or farming property is what drives Bjorn. He wants each experience to not only be enjoyable, but seamless as well. If you're in the market to sell or buy land, give Bjorn a call.



**BJORN WILKERSON,**  
LAND AGENT

**417.233.1243**

[BWilkerson@MidwestLandGroup.com](mailto:BWilkerson@MidwestLandGroup.com)



## MidwestLandGroup.com

This property is being offered by Midwest Land Group, LLC. 913.674.8010. All information provided by Midwest Land Group, LLC or their agents was acquired from sources deemed accurate and reliable, however we do not warrant its accuracy or completeness. Midwest Land Group, LLC assumes no liability for error, omission or investment results. Midwest Land Group, LLC. Licensed in Arkansas, Illinois, Iowa, Kansas, Minnesota, Missouri, Nebraska, Oklahoma, South Dakota, and Wisconsin.