

MIDWEST LAND GROUP PRESENTS



# MADISON COUNTY, IA

10 ACRES



[MidwestLandGroup.com](http://MidwestLandGroup.com)

MIDWEST LAND GROUP IS HONORED TO PRESENT

# BEAUTIFUL SPACIOUS HOME WITH AMAZING VIEWS AND ENDLESS POSSIBILITIES

Midwest Land Group is proud to present this absolutely gorgeous newer 2 story home on 10 +/- acres. As you travel down the driveway entering the property, you will see for yourself just how amazing this acreage and home really is. This beautiful country home was built with tremendous pride and craftsmanship. No shortcuts were taken anywhere! Imagine waking up with a cup of coffee on your wrap-around porch, taking in the breathtaking views with complete serenity. This acreage comes with a manicured garden and an abundance of apple and peach trees surely to make anyone's mouth water. After a long day's work, you'll have a fully stocked pond to fish and wash away your day's worries. What more do you need? You'll never want to leave your private retreat. This self-sufficient home and hobby farm has everything you will ever need

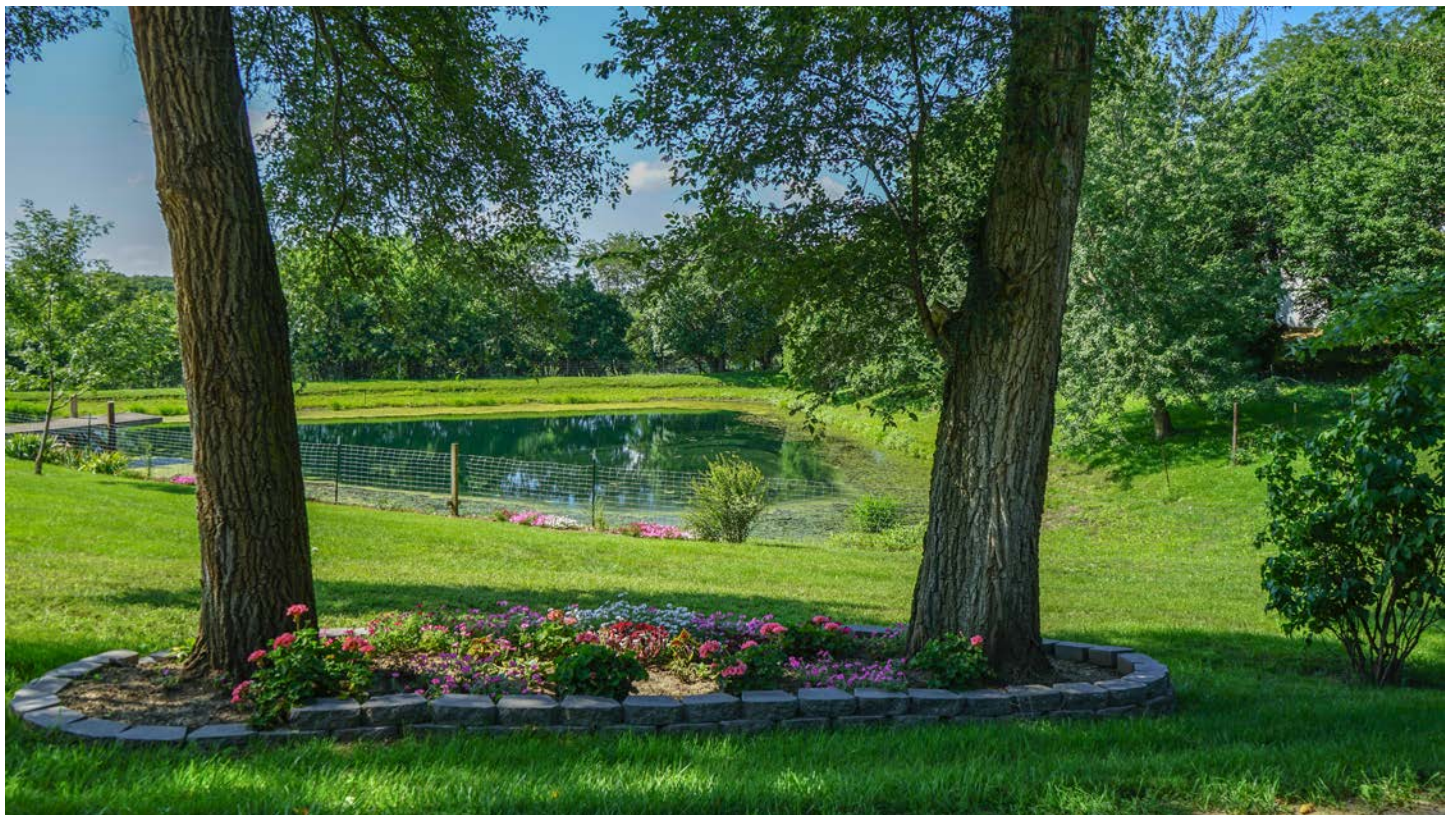
to live off the grid. This 5 bedroom, 2 bathroom home includes a beautiful wrap-around open porch, pantry, full basement, canning room, and root cellar, and also includes an attached 2 story 2 stall garage with an additional 4 bedrooms and 1 bathroom for any guests that might want to stay. The new horse barn with lean-to includes a tack room, tie, and box stalls along with excellent fencing. A short distance from the barn is a new large hoop barn that includes a run-in shed and plenty of areas to store your hay. This absolutely gorgeous home in one of the most sought-after counties in all of Iowa will be sure to please. If you're looking to move to the country and become self-sufficient and live in privacy, look no more. This home on acreage will check all the boxes! Must be pre-approved. Call for your private showing at (515) 739-3053.



# PROPERTY FEATURES

PRICE: **\$689,000** | COUNTY: **MADISON** | STATE: **IOWA** | ACRES: **10**

- 15 miles south of Winterset, Iowa
- 45 miles south of West Des Moines, Iowa
- Newly built 2021 gorgeous 2 story home (32'x48') with 10'x16' sewing room
- Wrap-around porch (10'x32' and 8'x16')
- Home includes 5 bedrooms, 1 office, and 2 bathrooms
- Home is completely spray-foamed and has all run wiring for electricity and in-floor heating
- Home has a full basement, 1 pantry, canning room (8'x16') and root cellar (10'x16')
- Attached 2 story 2 stall garage (28'x32') including 4 bedrooms and 1 bathroom
- 2016 horse barn (30'x40') with 22' lean-to
- Barn includes a tack room, 5 tie stalls, and 6 box stalls
- 2022 new hoop building (40'x80') run-in shed (18'x20') chicken house (10'x12')
- Orchard: 4 peach trees, 9 apple trees, and 3 pie cherry trees
- Storage garage (20'x24')
- Double-wide trailer (24'x64')
- Stocked pond
- Amazing views in every direction
- Extremely private and quiet
- Move-in ready hobby farm with absolutely everything you will ever need
- Self-sufficient lifestyle
- Superior craftsmanship
- Wildlife galore
- Beautiful landscaping and flowers throughout property
- World-class garden
- Excellent fencing for all your livestock needs
- Must be pre-approved
- Call listing agent for your private tour



# 5 BED 2 BATH NEWLY-BUILT HOME



# 30'X40' HORSE BARN WITH LEAN-TO



# 40'X80' HOOP BUILDING

---



# STOCKED POND

---



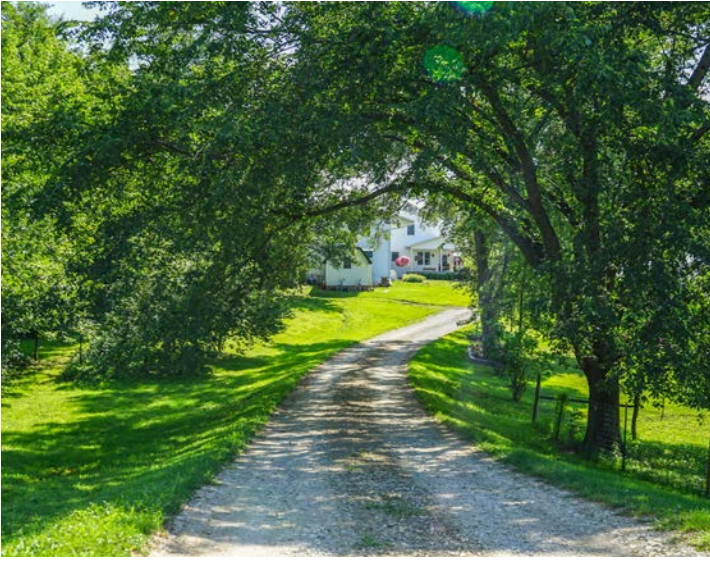
# BEAUTIFUL LANDSCAPING

---



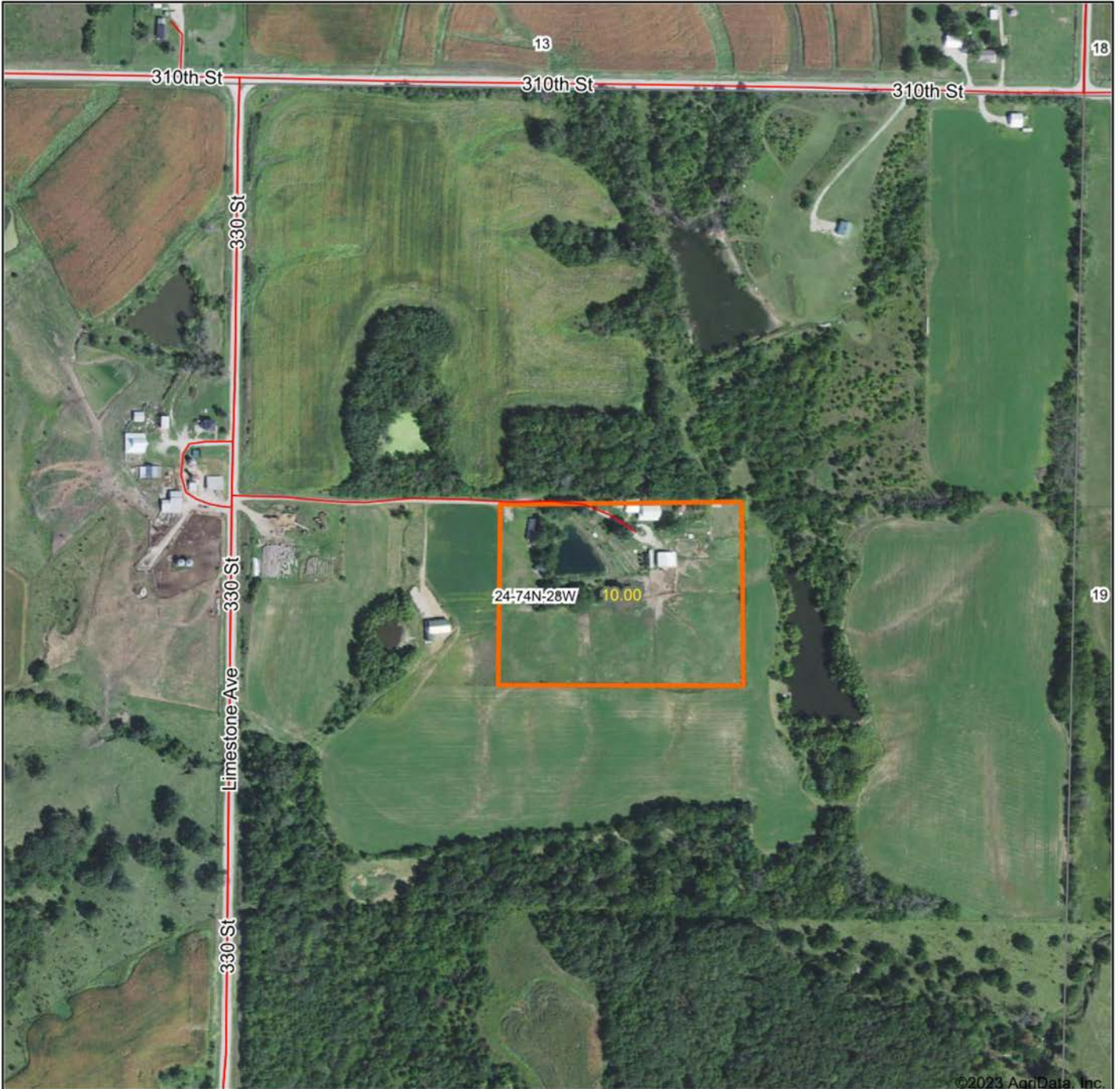
# ADDITIONAL PHOTOS

---





# AERIAL MAP



©2023 AgriData, Inc.

Boundary Center: 41° 11' 43.73, -94° 1' 9.03



Maps Provided By:



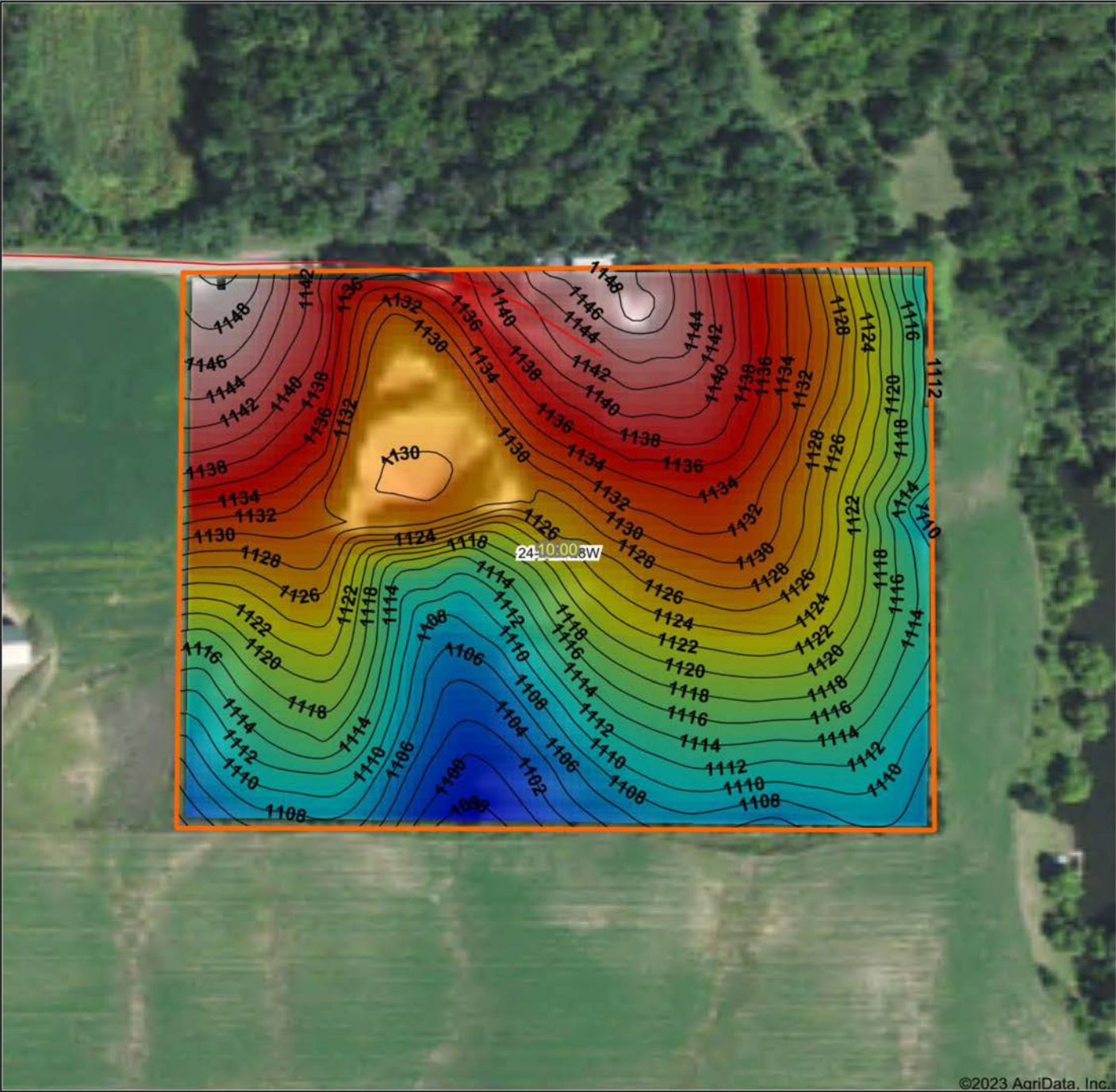
© AgriData, Inc. 2023 www.AgriDataInc.com

**24-74N-28W**  
**Madison County**  
**Iowa**

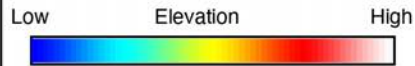


7/30/2023

# HILLSHADE MAP



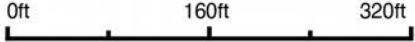
©2023 AgriData, Inc.



Maps Provided By:

**surety**  
CUSTOMIZED ONLINE MAPPING  
© AgriData, Inc. 2023 www.AgriDataInc.com

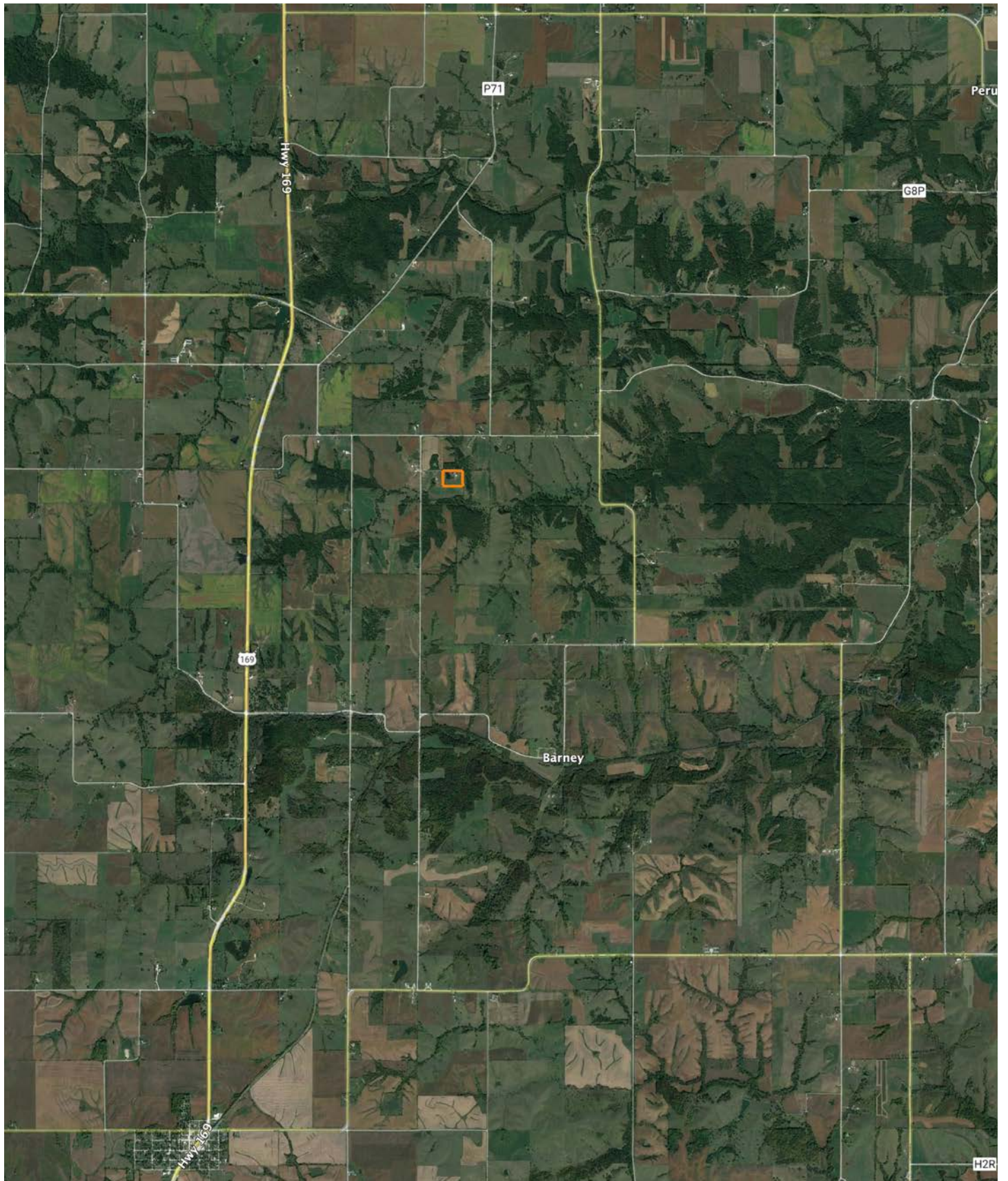
Source: USGS 3 meter dem  
Interval(ft): 2  
Min: 1,097.4  
Max: 1,150.5  
Range: 53.1  
Average: 1,124.6  
Standard Deviation: 12.3 ft



**24-74N-28W**  
**Madison County**  
**Iowa**

Boundary Center: 41° 11' 43.73, -94° 1' 9.03

# OVERVIEW MAP



# AGENT CONTACT

---

Dennis Williams has the determination and grit it takes to get the job done, which was instilled in him at a young age and evidenced through his 31 year career in logistics. Dennis grew up in Rochester, MN, where he graduated from Mayo High School and Rochester Community College. After buying and selling several of his own rec farms, Dennis and his family moved from Minnesota to pursue his dream of selling land in Iowa.

At Midwest Land Group, buyers and sellers alike know they can count on Dennis to get the job done and do it right. This agent prides himself on being a good listener who works with the utmost honesty and integrity. He relishes in the fact that many lifelong friendships are made through real estate transactions and looks forward to creating lasting memories with each client.

Dennis is passionate about pursuing whitetails, having even owned his own whitetail consulting business. He had his hunts filmed and shared on Hunter's Specialties Primetime videos, and afterward was hired as a pro staff member on the TV show Driven with Pat and Nicole. When he's not helping clients achieve their land real estate needs, Dennis enjoys hunting and fishing, and spending time with his family, including wife, Janet, son Daniel, and daughter Brooklyn.



**DENNIS WILLIAMS,**  
LAND AGENT  
**515.739.3053**  
DWilliams@MidwestLandGroup.com



**MidwestLandGroup.com**

This property is being offered by Midwest Land Group, LLC. 913.674.8010. All information provided by Midwest Land Group, LLC or their agents was acquired from sources deemed accurate and reliable, however we do not warrant its accuracy or completeness. Midwest Land Group, LLC assumes no liability for error, omission or investment results. Midwest Land Group, LLC. Licensed in Arkansas, Illinois, Iowa, Kansas, Missouri, Nebraska, Oklahoma, South Dakota, and Wisconsin.