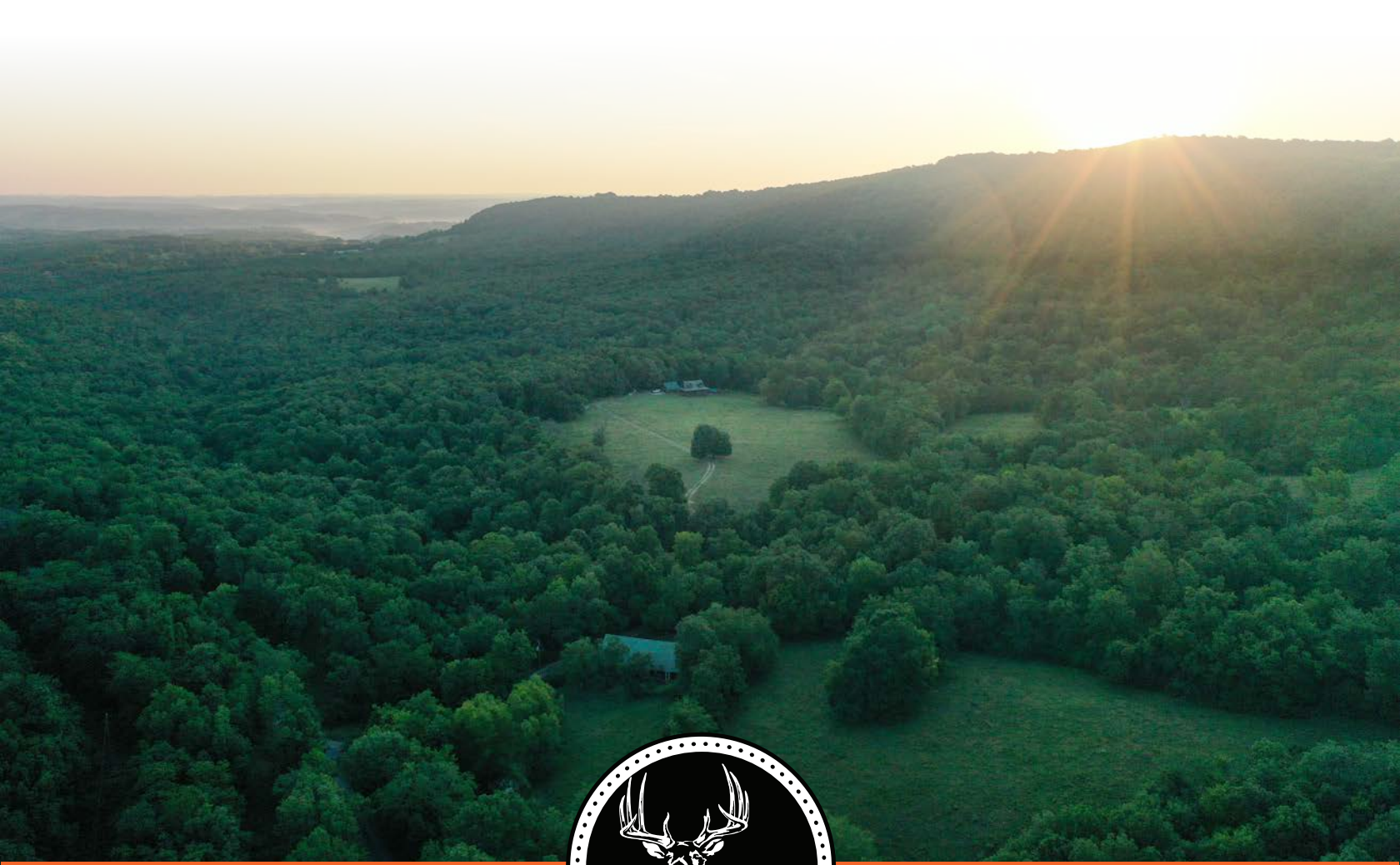


MIDWEST LAND GROUP PRESENTS

145 ACRES IN

SEARCY COUNTY ARKANSAS



MidwestLandGroup.com

MIDWEST LAND GROUP IS HONORED TO PRESENT

BEAUTIFUL CUSTOM LOG CABIN NESTLED WITHIN 145 +/- ACRES WITH SECOND HOME

Welcome to your slice of paradise nestled within 145 +/- acres of breathtaking beauty! This one-of-a-kind real estate offering presents an enchanting custom log cabin, surrounded by a stunning mix of mature hardwoods, picturesque pastures, and awe-inspiring bluffs. There is a great history of natural Ozark Mountains wildlife on this farm, it is a truly private hunting paradise with species that include deer, turkeys, bears, and razorback hogs. The main residence is a meticulously crafted 3 bed, 2 bath log cabin, with its rustic appeal, open floor plan, and modern interior, this home provides a serene and inviting atmosphere for family and guests. For those warm summer days, cool off and relax in the

above-ground pool. Whether you want to take a refreshing dip or simply lounge poolside with a good book, this oasis is an excellent addition to the property, providing fun and relaxation for all ages. The property also boasts an older charming second home, making it an ideal opportunity as a fixer-upper for multi-generational living, a guest retreat, or an income-generating rental. Located in one of the most sought-after areas in Arkansas, this pristine property is only 18 miles from the breathtaking Buffalo National River, a pristine natural wonder that provides plenty of incredible canoeing, bluff viewing, wildlife sightings, and some really nice places to stop and swim.



PROPERTY FEATURES

PRICE: **\$947,500** | COUNTY: **SEARCY** | STATE: **ARKANSAS** | ACRES: **145**

- 145 +/- acres
- 2,865 +/- sq. ft. custom log home
- 60'x60' barn/workshop
- Above-ground pool
- Picturesque pastures
- Wet weather creek
- Developed year-round natural spring water
- 2 ponds
- Trail system
- 18 miles to Buffalo National River
- 7 miles to Marshall
- 5 miles to Leslie
- 35 miles to Mountain View
- 2,318 +/- sq. ft. fixer-upper second home
- Marshall Public water
- Petit Jean Electric
- Petit Jean high-speed Fiber internet



2,865 +/- SQ. FT. CUSTOM LOG HOME

The main residence is a meticulously crafted 3 bed, 2 bath log cabin, with its rustic appeal, open floor plan, and modern interior, this home provides a serene and inviting atmosphere for family and guests.



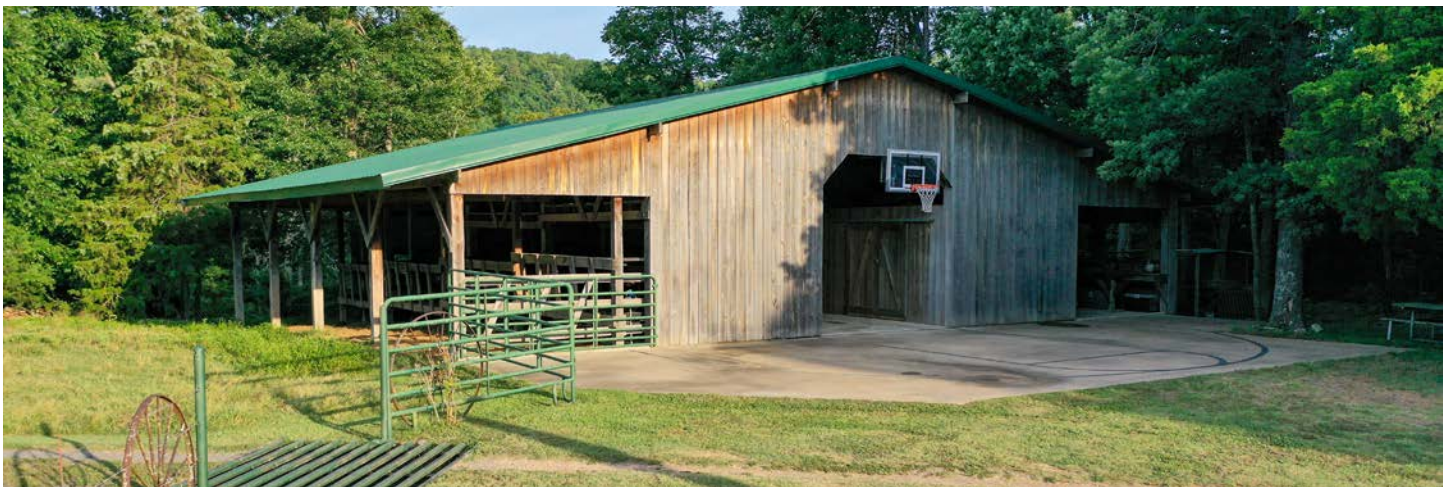
ADDITIONAL CABIN PHOTOS



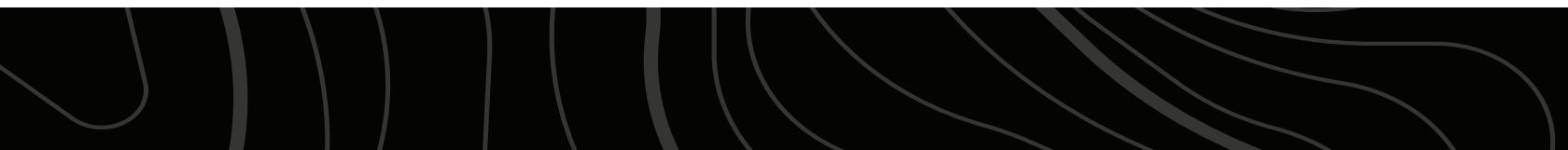
WET WEATHER CREEK



60'X60' BARN/WORKSHOP



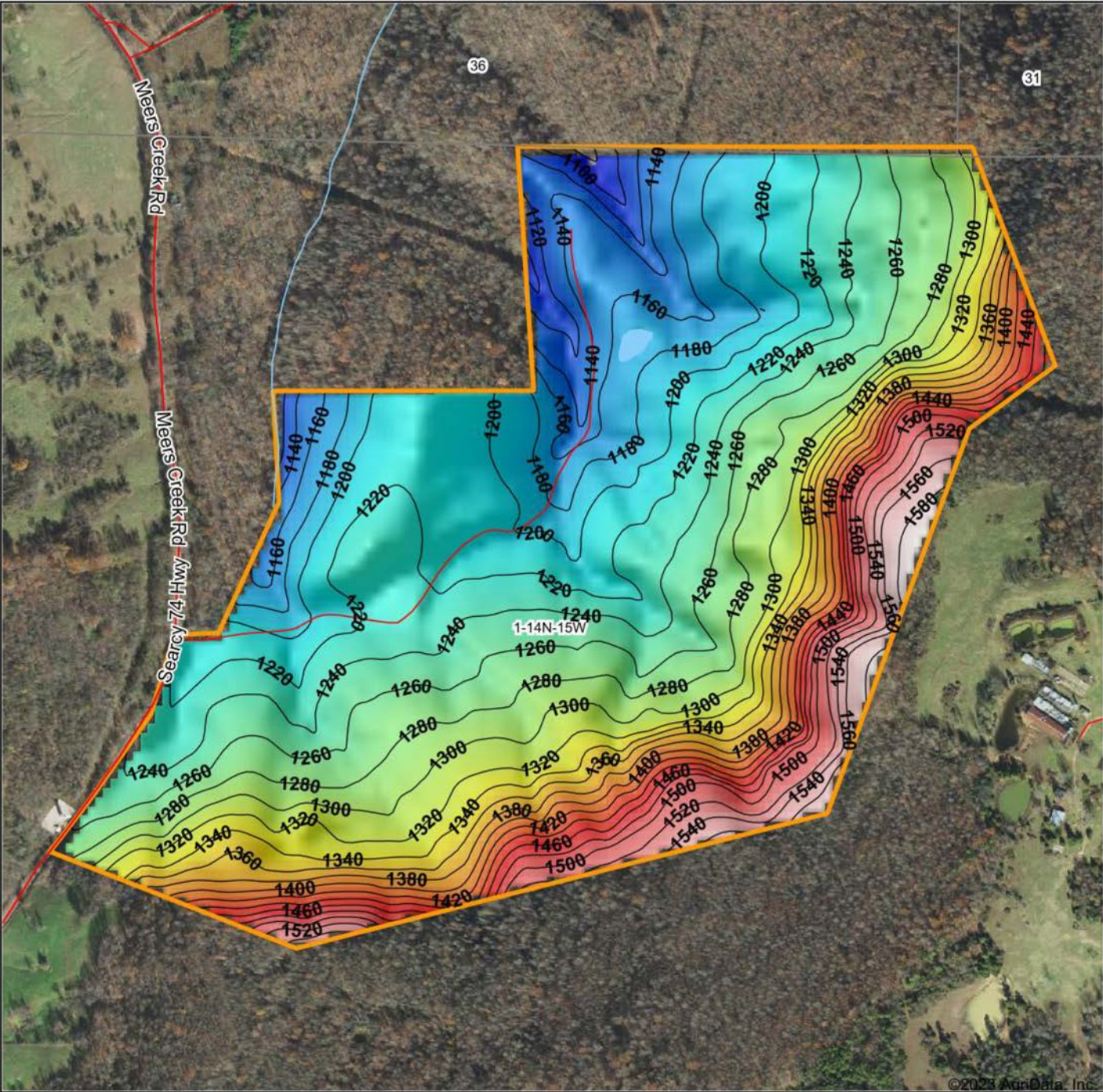
PICTURESQUE PASTURES



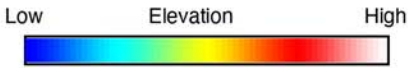
ADDITIONAL PHOTOS



HILLSHADE MAP



©2023 AgriData, Inc.



Source: USGS 10 meter dem
 Interval(ft): 20
 Min: 1,079.4
 Max: 1,599.5
 Range: 520.1
 Average: 1,288.9
 Standard Deviation: 112.07 ft

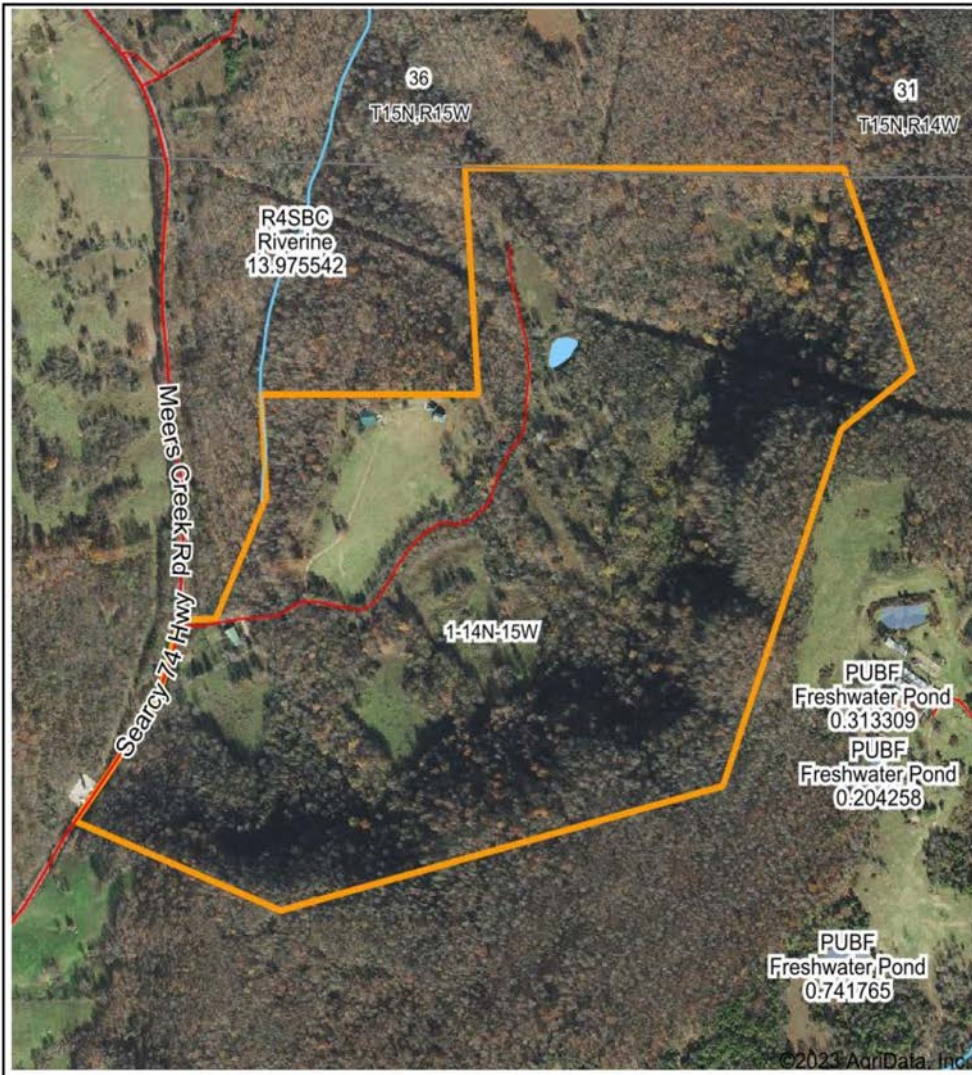


1-14N-15W
Searcy County
Arkansas

Boundary Center: 35° 53' 11.54, -92° 31' 45.26

Maps Provided By:
surety
 CUSTOMIZED ONLINE MAPPING
 © AgriData, Inc. 2023 www.AgriDataInc.com

WETLANDS MAP



State: **Arkansas**
 Location: **1-14N-15W**
 County: **Searcy**
 Township: **Wileys Cove**
 Date: **7/17/2023**



Maps Provided By:

 CUSTOMIZED ONLINE MAPPING
 © AgriData, Inc. 2023 www.AgriDataInc.com

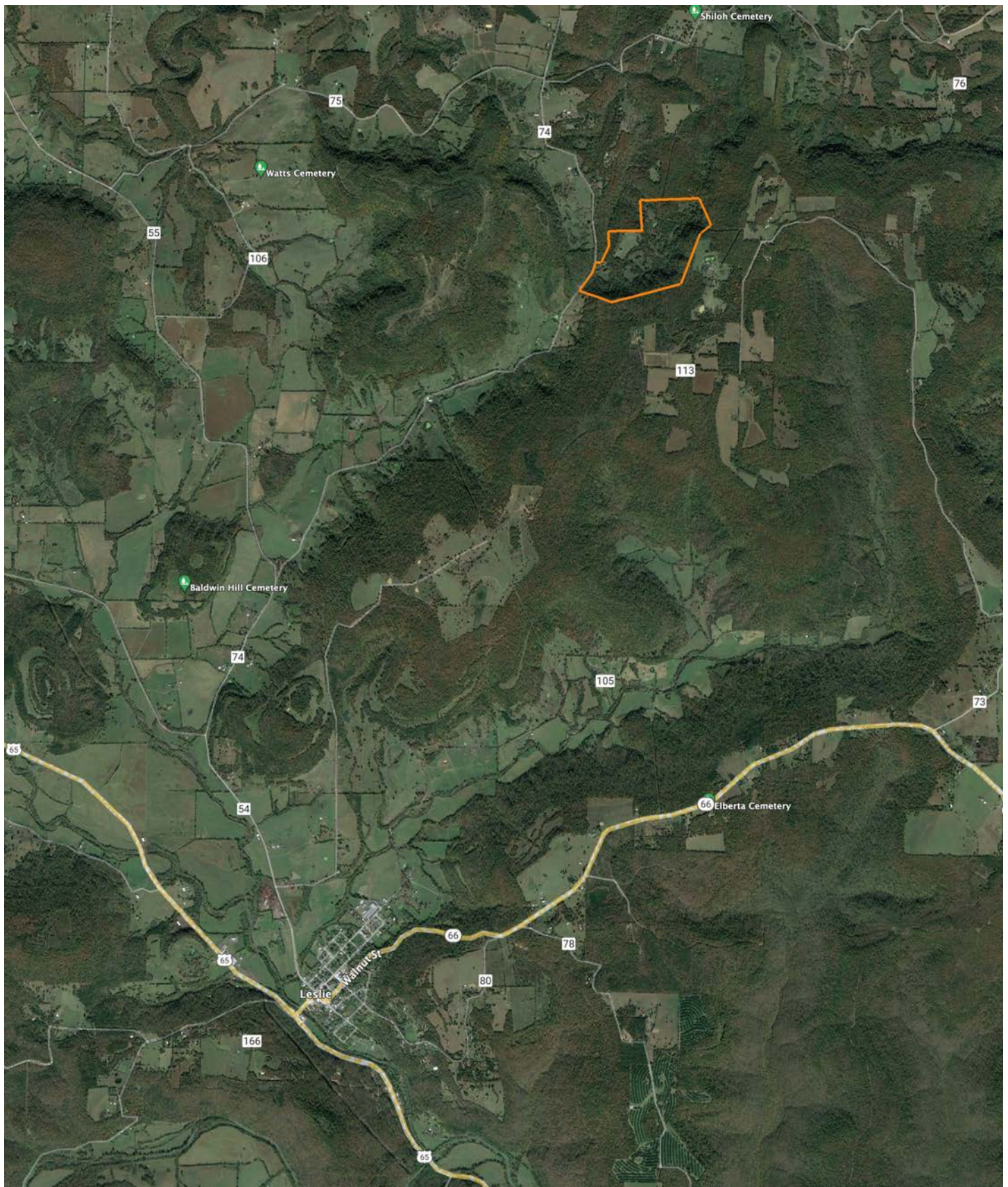


0ft 877ft 1755ft

Classification Code	Type	Acres
R4SBC	Riverine	0.08
Total Acres		0.08

Data Source: National Wetlands Inventory website. U.S. DoI, Fish and Wildlife Service, Washington, D.C. <http://www.fws.gov/wetlands/>

OVERVIEW MAP



AGENT CONTACT

There's no doubt Ray Scheide has a passion for the outdoors. At Midwest Land Group, he's able to wake up every morning excited about his job, working for a company he's proud to represent. Ray brings great knowledge of the outdoors to every interaction, offering the best service he knows how to each and every client. From listing to closing, it's his mission to bring people together as they make a big life decision. Ray was born in Washington, D.C., and graduated from the University of Arkansas—Fort Smith. A two-time FLW Tour Champion, Ray spent 11 years as a professional fisherman, and served as only one of 12 representatives from the U.S. in the Eurocup in Spain. During his tenure as a professional angler, he marketed himself to large corporate brands and served as an ambassador in the fishing industry. With great desire to share his passion with kids, Ray developed the first high school fishing team in Arkansas that was the largest in the state for five years, and averaged 125 youths for whom he'd help host a tournament circuit for and take them all over the United States to compete in national events. When he's not out fishing, you can probably find him hunting or traveling. Ray lives in Dover, Arkansas, with his wife, Michelle, son, Corey, and daughter, Mikayla. Call Ray today to experience the Midwest Land Group difference!



RAY SCHEIDE, LAND AGENT
479.886.5312
RScheide@MidwestLandGroup.com



MidwestLandGroup.com

This property is being offered by Midwest Land Group, LLC. 913.674.8010. All information provided by Midwest Land Group, LLC or their agents was acquired from sources deemed accurate and reliable, however we do not warrant its accuracy or completeness. Midwest Land Group, LLC assumes no liability for error, omission or investment results. Midwest Land Group, LLC. Licensed in Arkansas, Illinois, Iowa, Kansas, Missouri, Nebraska, Oklahoma, South Dakota, Texas, and Wisconsin.