

MIDWEST LAND GROUP PRESENTS

320 ACRES IN

BLAINE COUNTY OKLAHOMA



MidwestLandGroup.com

MIDWEST LAND GROUP IS HONORED TO PRESENT

AN OUTDOORSMEN'S DREAM IN BLAINE COUNTY, OKLAHOMA

This is the ideal hunting property that's easily accessible yet secluded and is only 70 miles from the Oklahoma City metro. Located just ½ mile off blacktop is 320 +/- acres that offer a wide array of different terrain and plenty of dense cover. This property has seen minimal hunting pressure over the years and it's a perfect blank canvas for its new owner as the farm naturally sets up to hold and grow great deer. Some folks just like the hunt while others enjoy the management aspect as well as the hunt and this property bodes well for all. The dense cover ensures the safety that all wildlife desire and there are multiple potential food plot locations

all over this half section. There's an established trail system around the perimeter of the property as well as a bridge over the wet weather creek that runs from east to west throughout the entirety of the farm. This tract offers much more than just trophy whitetail, there's also a strong population of turkeys a few hogs that will pass through, and a rebounding population of quail and pheasant. There's much to love about this property but it needs to be seen in person to truly appreciate what it offers. Contact Blake Bechtel at (580) 363-6870 for a private tour.



PROPERTY FEATURES

PRICE: **\$615,000** | COUNTY: **BLAINE** | STATE: **OKLAHOMA** | ACRES: **320**

- Trophy deer
- Prime recreational property
- High deer density with mature whitetail
- Multiple food plot locations
- Dense cover
- Wet weather creek
- Various elevation changes
- 5-strand barbed wire perimeter fencing
- Turkey, hog, quail, and pheasant hunting
- Established trail systems
- ½ mile off blacktop
- 70 miles from the Oklahoma City metro



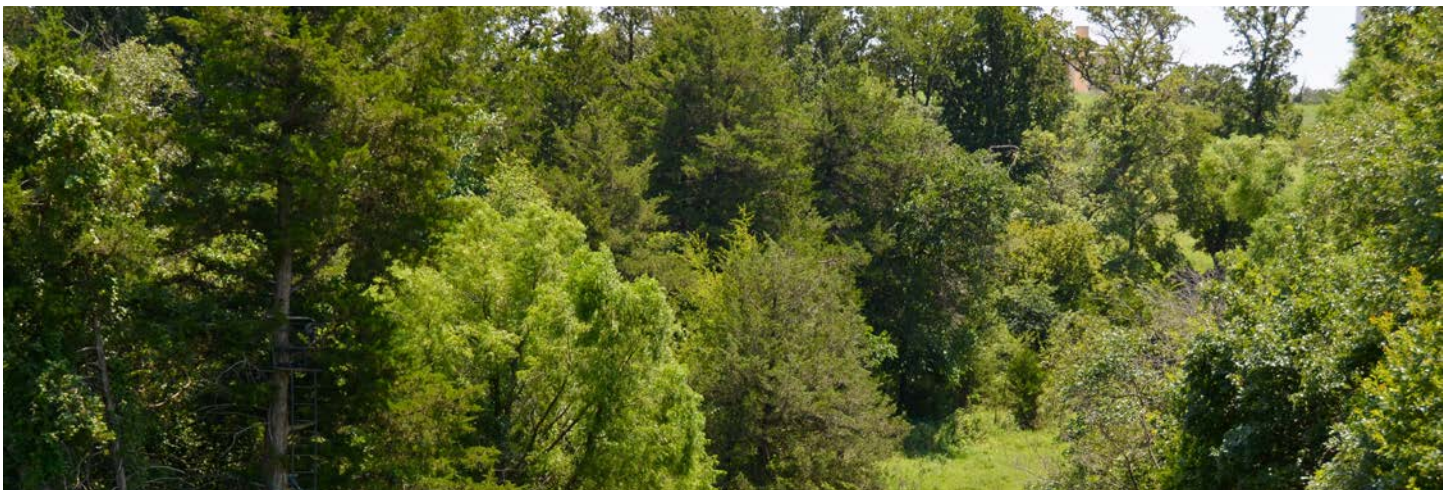
320 +/- ACRES



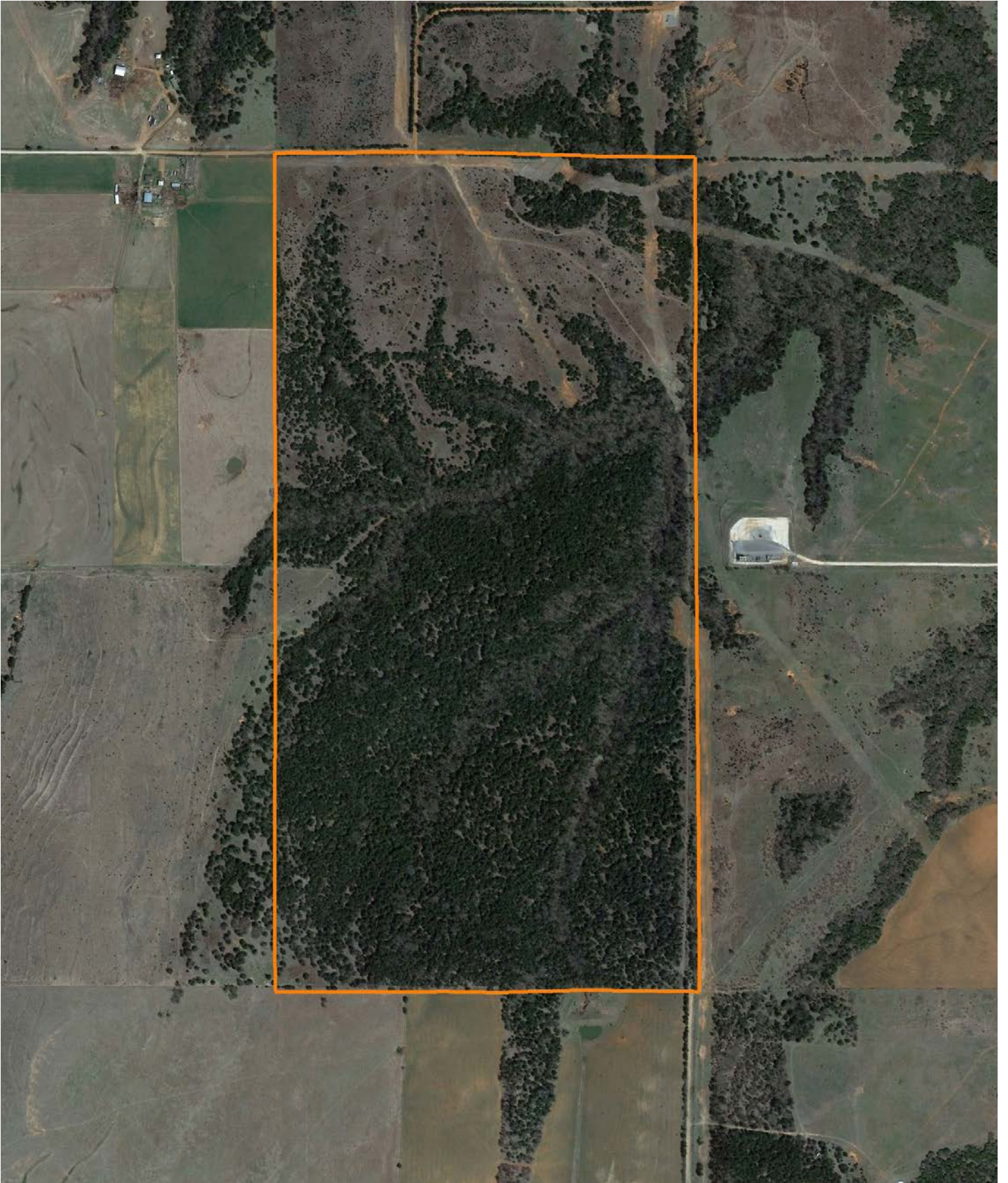
WET WEATHER CREEK



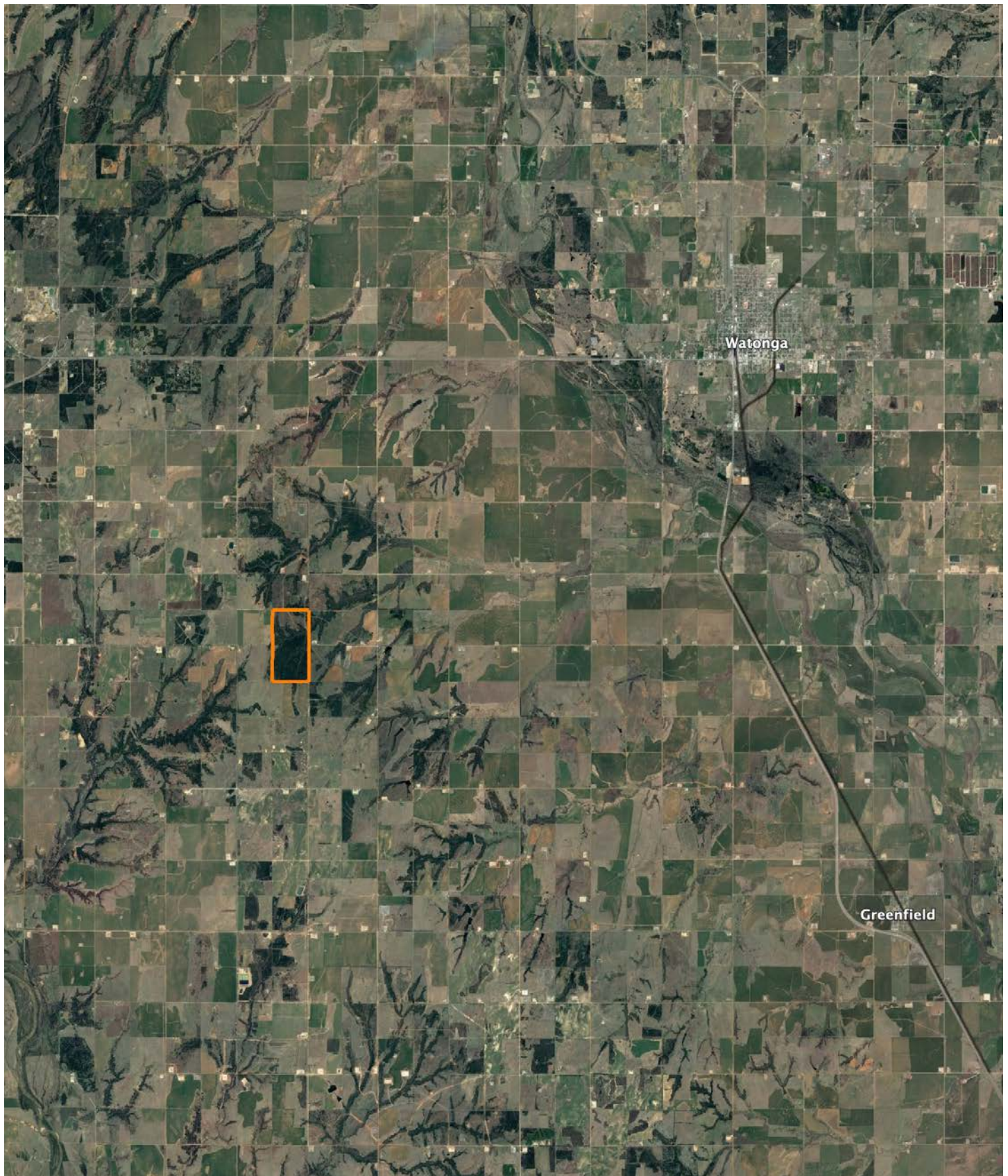
DENSE COVER



AERIAL MAP



OVERVIEW MAP



AGENT CONTACT

Born and raised in north central Oklahoma, Blake Bechtel has always had a passion for agriculture and the outdoors. Growing up, Blake spent his summers working on a family friend's row crop farm and worked year-round tending to his own livestock projects through 4H and FFA. After graduating from Blackwell High School, Blake went on to study business administration at Oklahoma State University, where he was a member of the Alpha Gamma Rho fraternity. While in college, he not only met his wife, Natalie, he also met lifelong friends that ignited his passion for learning and understanding the art of hunting trophy whitetails.

After college, Blake moved to Edmond, Oklahoma, where he began his career in the oil and gas industry. Having spent the majority of his career providing services to oil and gas producers, he understands the importance of client relationships and is focused on always doing what's best for his customer. Today, Blake still resides in Edmond with his wife and four daughters Kyler, Tegan, Ainsley and Berkley. He serves as an ambassador for the Folds of Honor Oklahoma City Chapter, coaches little league soccer, and enjoys hunting and playing golf. Having a well-rounded background in agriculture and hunting properties, coupled with his experiences in the oil and gas industry, Blake understands the importance and value of land transactions and is committed to serving his clients with the utmost care and commitment.



BLAKE BECHTEL,
LAND AGENT

580.363.6870

BBechtel@MidwestLandGroup.com



MidwestLandGroup.com

This property is being offered by Midwest Land Group, LLC. 913.674.8010. All information provided by Midwest Land Group, LLC or their agents was acquired from sources deemed accurate and reliable, however we do not warrant its accuracy or completeness. Midwest Land Group, LLC assumes no liability for error, omission or investment results. Midwest Land Group, LLC. Licensed in Arkansas, Illinois, Iowa, Kansas, Missouri, Nebraska, Oklahoma, South Dakota, and Wisconsin.