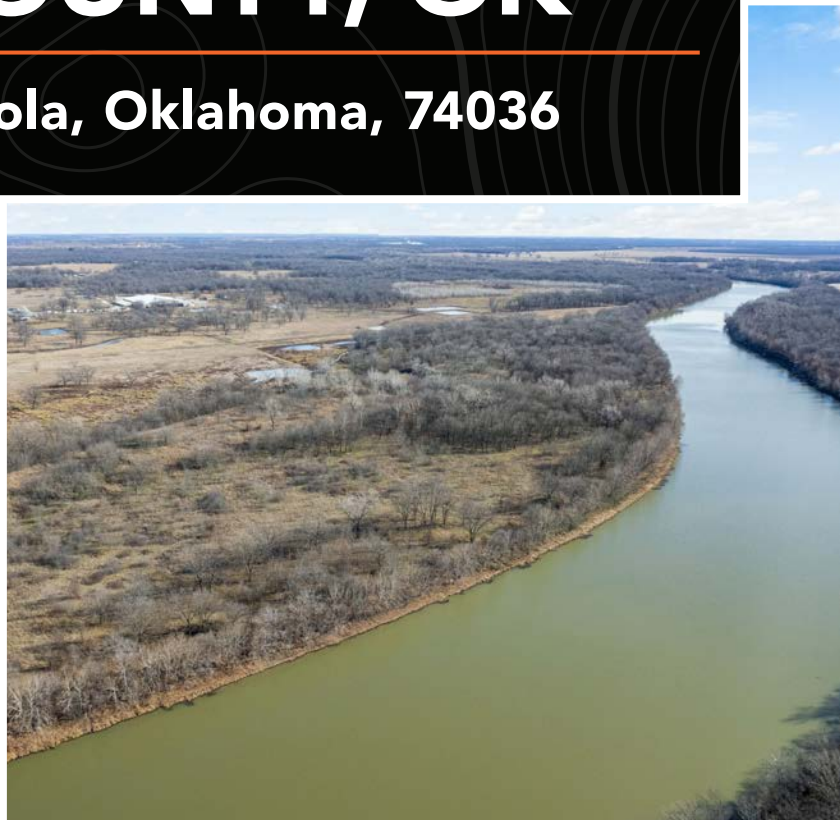


MIDWEST LAND GROUP PRESENTS



230 ACRES  
**ROGERS COUNTY, OK**

12900 E 600 Road, Inola, Oklahoma, 74036





MIDWEST LAND GROUP IS HONORED TO PRESENT

# 130,000 SQUARE FOOT STATE-OF-THE-ART ARENA AND EVENT CENTER ON 230 +/- ACRES

Here's an incredible investment opportunity for the property formerly known as the "Riverbend Arena & Event Center"! Built new in 2015, this state-of-the-art facility features 130,000 square feet under one roof and is located just 9 miles east of the Hard Rock Hotel & Casino Tulsa on Highway 412 and approximately ¾ mile south on E. 600 Road encompassing 230 +/- acres. The "Riverbend" is well known for hosting world-class events that include team roping, rough stock, team sorting, barrel racing, timed events, and concerts. With multiple indoor stalls, outdoor paddocks, an RV park, and ample parking, there is essentially no limit to the types of events that can be hosted at Riverbend ranging in size up to 5,000 people for indoor events and 30,000+ for outdoor events.

The event center with approximately 22,000 square feet under HVAC is designed to host a multitude of events and features concessions, a full commercial kitchen, restaurant capabilities, multiple full-service bars, public restrooms, and plenty of floor space to host weddings, business conferences, etc. There are also several nicely finished offices for future staff to run the day-to-day operations.

This property has been well known for not just rodeo events but hosting a multitude of other events including large concerts, dirt track racing, tractor pulls, clinics, private events, and an RV park with 90 hookups. The land is vast and beautiful, and the facilities are first-class. Don't miss the opportunity to see this place in person! Contact Blake Bechtel to schedule your private tour.





# PROPERTY FEATURES

PRICE: **\$1,995,000** | COUNTY: **ROGERS** | STATE: **OKLAHOMA** | ACRES: **230**

- 130,000 sq. ft. under one roof
- 275'x150' arena floor
- Indoor capacity 5,000
- Outdoor capacity 30,000+
- Lighted outdoor arena
- Multiple outbuildings
- Hay barn
- Sorting pens
- Large parking area
- PUD (Planned Unit Development)
- 90 RV hookups





# 130,000 SQ. FT. UNDER ONE ROOF

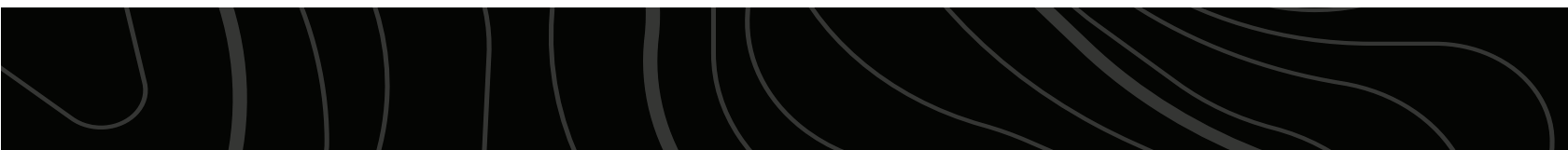
The "Riverbend" is well known for hosting world-class events that include team roping, rough stock, team sorting, barrel racing, timed events, and concerts.





230 +/- ACRES

---





# 90 RV HOOKUPS

---



# LIGHTED OUTDOOR ARENA

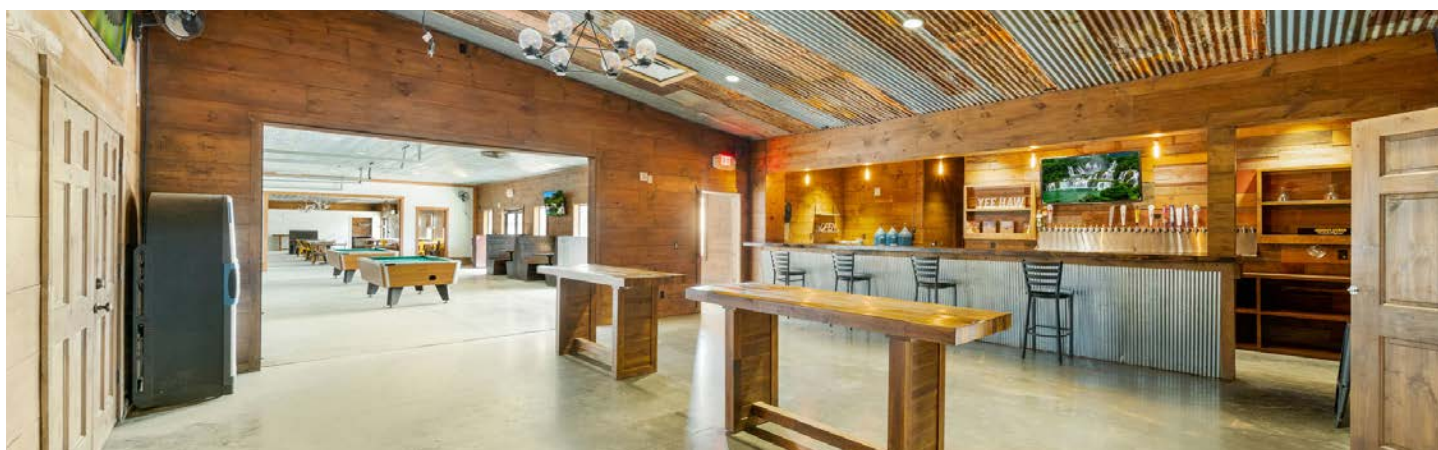
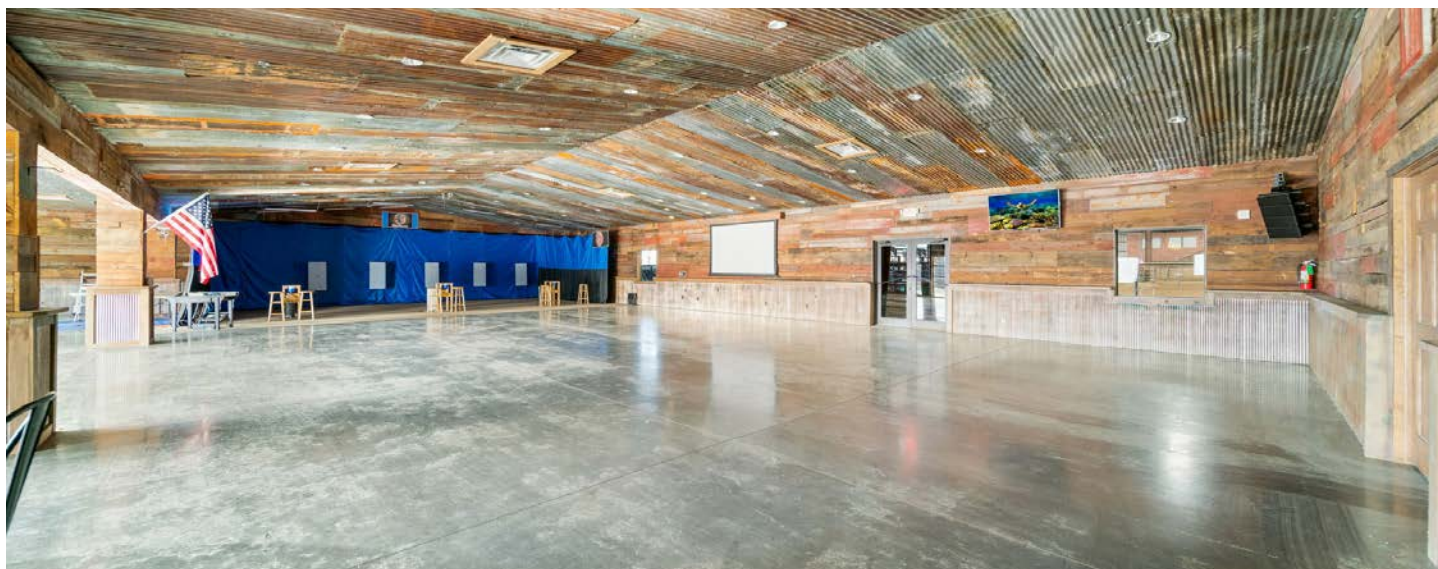
---





# EVENT CENTER

The event center with approximately 22,000 square feet under HVAC is designed to host a multitude of events and features concessions, a full commercial kitchen, restaurant capabilities, multiple full-service bars, public restrooms, and plenty of floor space to host weddings, business conferences, etc.





# FINISHED OFFICE SPACE





# HAY BARN

---



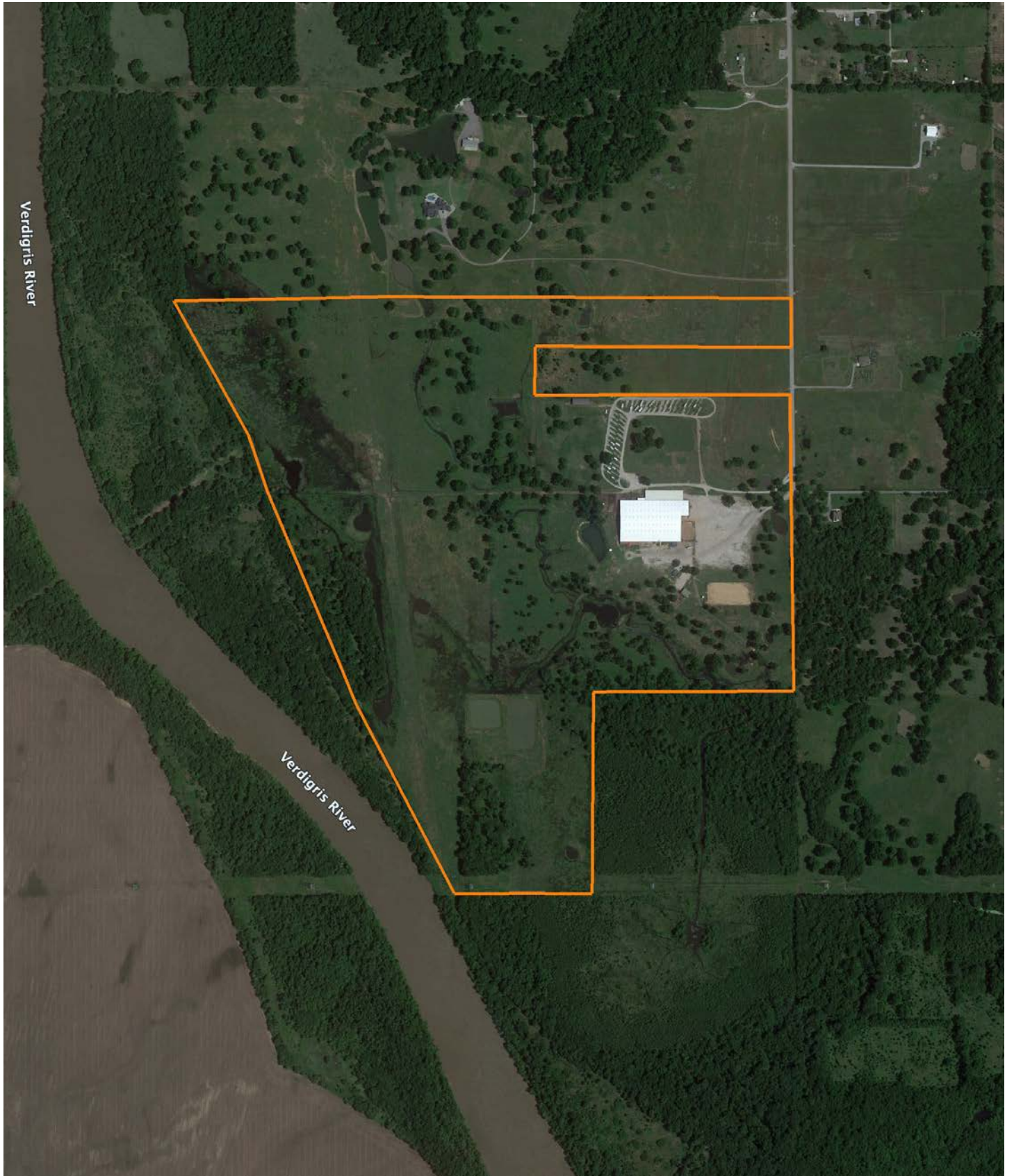
# SORTING PENS

---



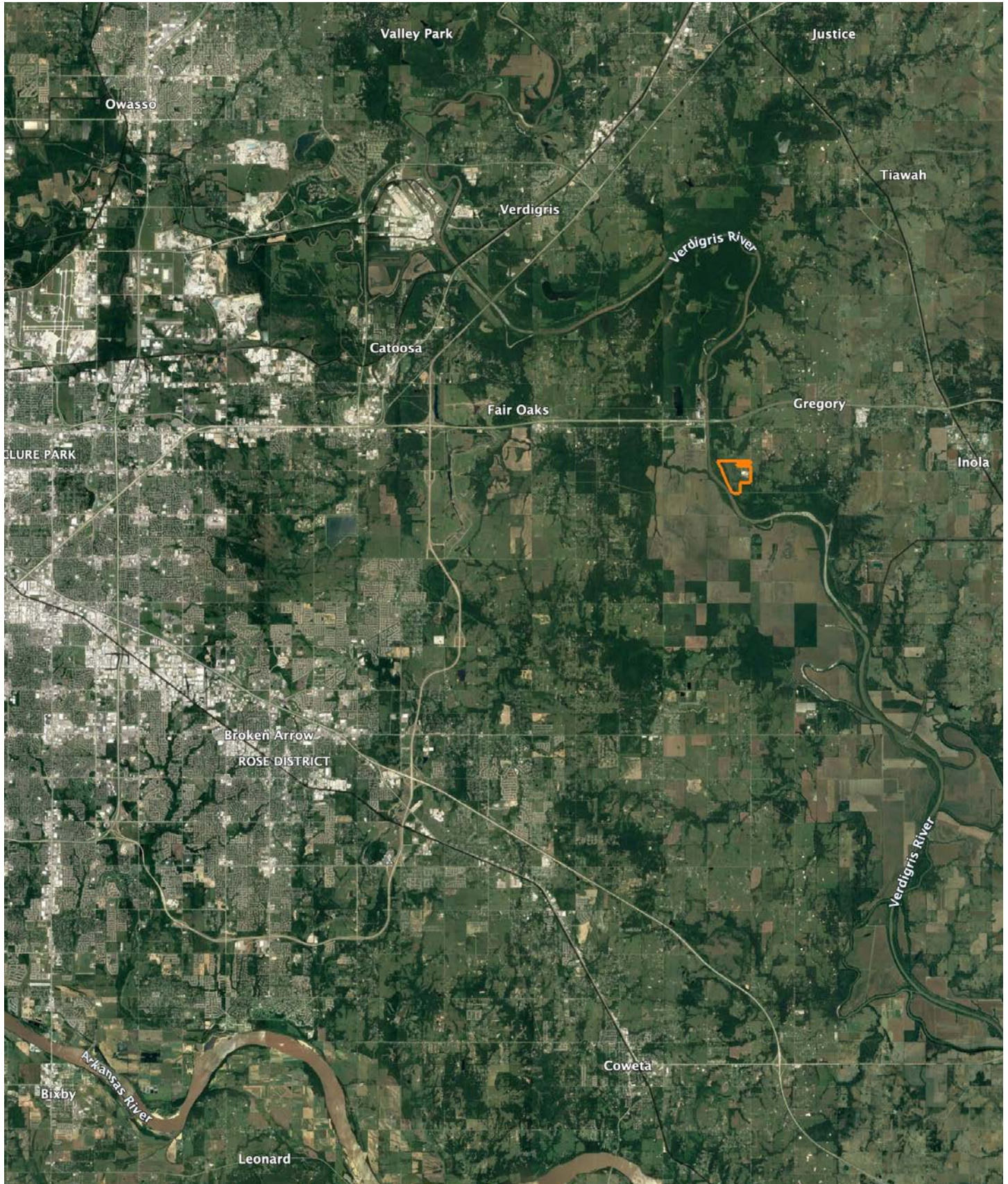


# AERIAL MAP





# OVERVIEW MAP





## AGENT CONTACT

---

Born and raised in north central Oklahoma, Blake Bechtel has always had a passion for agriculture and the outdoors. Growing up, Blake spent his summers working on a family friend's row crop farm and worked year-round tending to his own livestock projects through 4H and FFA. After graduating from Blackwell High School, Blake went on to study business administration at Oklahoma State University, where he was a member of the Alpha Gamma Rho fraternity. While in college, he not only met his wife, Natalie, he also met lifelong friends that ignited his passion for learning and understanding the art of hunting trophy whitetails.

After college, Blake moved to Edmond, Oklahoma, where he began his career in the oil and gas industry. Having spent the majority of his career providing services to oil and gas producers, he understands the importance of client relationships and is focused on always doing what's best for his customer. Today, Blake still resides in Edmond with his wife and four daughters Kyler, Tegan, Ainsley and Berkley. He serves as an ambassador for the Folds of Honor Oklahoma City Chapter, coaches little league soccer, and enjoys hunting and playing golf. Having a well-rounded background in agriculture and hunting properties, coupled with his experiences in the oil and gas industry, Blake understands the importance and value of land transactions and is committed to serving his clients with the utmost care and commitment.



**BLAKE BECHTEL,**  
LAND AGENT

**580.363.6870**

[BBechtel@MidwestLandGroup.com](mailto:BBechtel@MidwestLandGroup.com)



**[MidwestLandGroup.com](http://MidwestLandGroup.com)**

This property is being offered by Midwest Land Group, LLC. 913.674.8010. All information provided by Midwest Land Group, LLC or their agents was acquired from sources deemed accurate and reliable, however we do not warrant its accuracy or completeness. Midwest Land Group, LLC assumes no liability for error, omission or investment results. Midwest Land Group, LLC. Licensed in Arkansas, Illinois, Iowa, Kansas, Minnesota, Missouri, Nebraska, Oklahoma, South Dakota, Tennessee, Texas, Wisconsin, and Wyoming.