

MIDWEST LAND GROUP PRESENTS

50 ACRES IN

MIAMI COUNTY KANSAS



MidwestLandGroup.com

MIDWEST LAND GROUP IS HONORED TO PRESENT

INVESTMENT/DEVELOPMENT PROPERTY IN MIAMI COUNTY

This is a great investment or development opportunity! 50 acres just north of Louisburg, Kansas and with Metcalf Road frontage. Louisburg is growing and here is a unique opportunity to invest or develop a large

parcel. Utilities are available and sewers are here. It is not often that a property like this becomes available for sale at a reasonable price. Call me and let's go take a closer look.



PROPERTY FEATURES

PRICE: **\$849,000** | COUNTY: **MIAMI** | STATE: **KANSAS** | ACRES: **50**

- Incredible location
- Metcalf Road frontage
- Great development property
- Beautiful flat terrain with lots of trees
- Utilities are at the road
- In Louisburg city limits
- Quick access to Overland Park and KC
- Mineral rights are intact and pass to the new owner
- Farming income



SURVEYED 50 ACRES



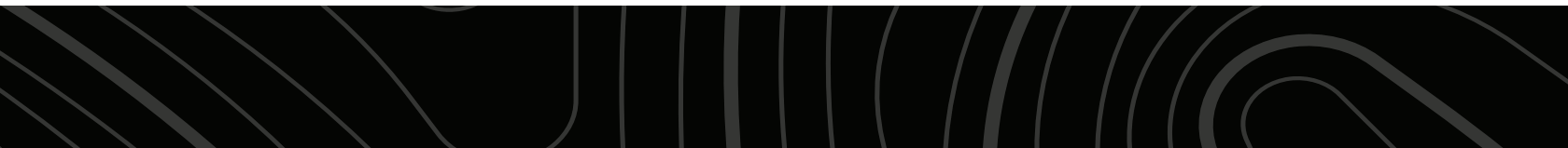
METCALF ROAD FRONTAGE



GREAT DEVELOPMENT PROPERTY



FARMING INCOME



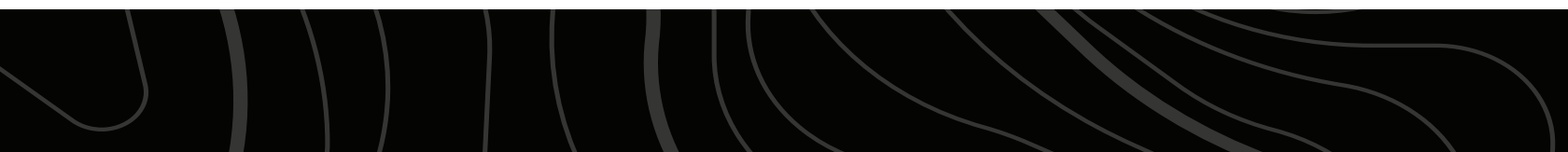
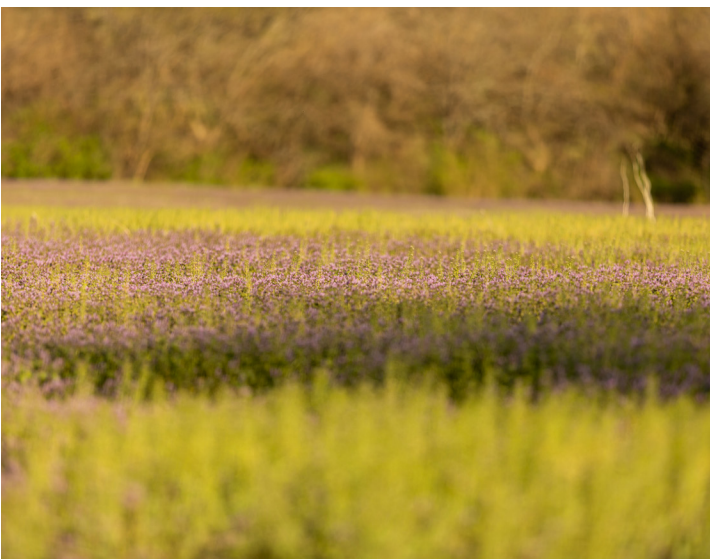
BEAUTIFUL FLAT TERRAIN WITH TREES



INCREDIBLE LOCATION



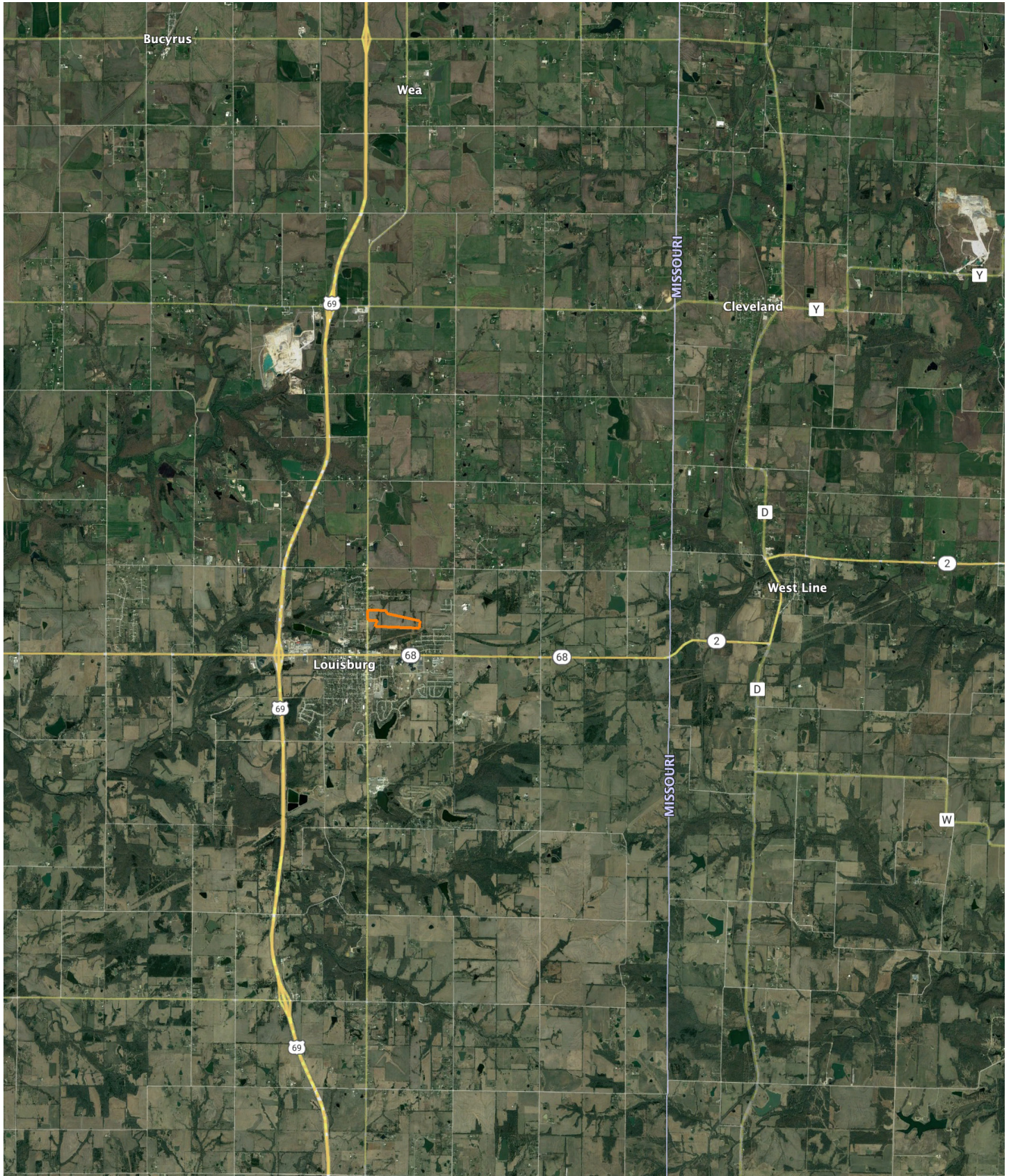
ADDITIONAL PHOTOS



AERIAL MAP



OVERVIEW MAP



AGENT CONTACT

Donnie Thomas grew up an avid outdoorsman, learning how to hunt and fish early on from his father on their farm in Garnett, KS. This led to his passion for farms and property, and the possibilities that lie within to improve the land for wildlife. Born in Oswego, KS, Donnie attended high school in Olathe and graduated from Emporia State University with a Business degree in Marketing and Management. Before getting into real estate, he co-owned a large, regional, medical equipment company with his brother, at which he developed a deep appreciation for service and how it can make all the difference in a client relationship.

Today, Donnie uses that experience at Midwest Land Group to help others buy and sell land. His background as an outdoorsman, as well as owning and managing a farm, lends itself well to the land real estate industry. In addition to hunting, fishing, shooting, water sports, and travel, this proud Eagle Scout enjoys helping youth learn how to hunt, having organized several youth pheasant hunts. Donnie serves as a worship leader at Kahola Lake Church and is active at Grace Church, as well as the Fellowship of Christian Athletes Outdoors. Donnie and his wife Kristina, along with their three sons, use their passion for the outdoors to make their family farm in LaCygne an outdoor retreat and an escape from the city.



DONNIE THOMAS, LAND AGENT
913.396.6245
DThomas@MidwestLandGroup.com



MidwestLandGroup.com

This property is being offered by Midwest Land Group, LLC. 913.674.8010. All information provided by Midwest Land Group, LLC or their agents was acquired from sources deemed accurate and reliable, however we do not warrant its accuracy or completeness. Midwest Land Group, LLC assumes no liability for error, omission or investment results. Midwest Land Group, LLC. Licensed in Arkansas, Illinois, Iowa, Kansas, Missouri, Nebraska, Oklahoma, South Dakota, and Wisconsin.