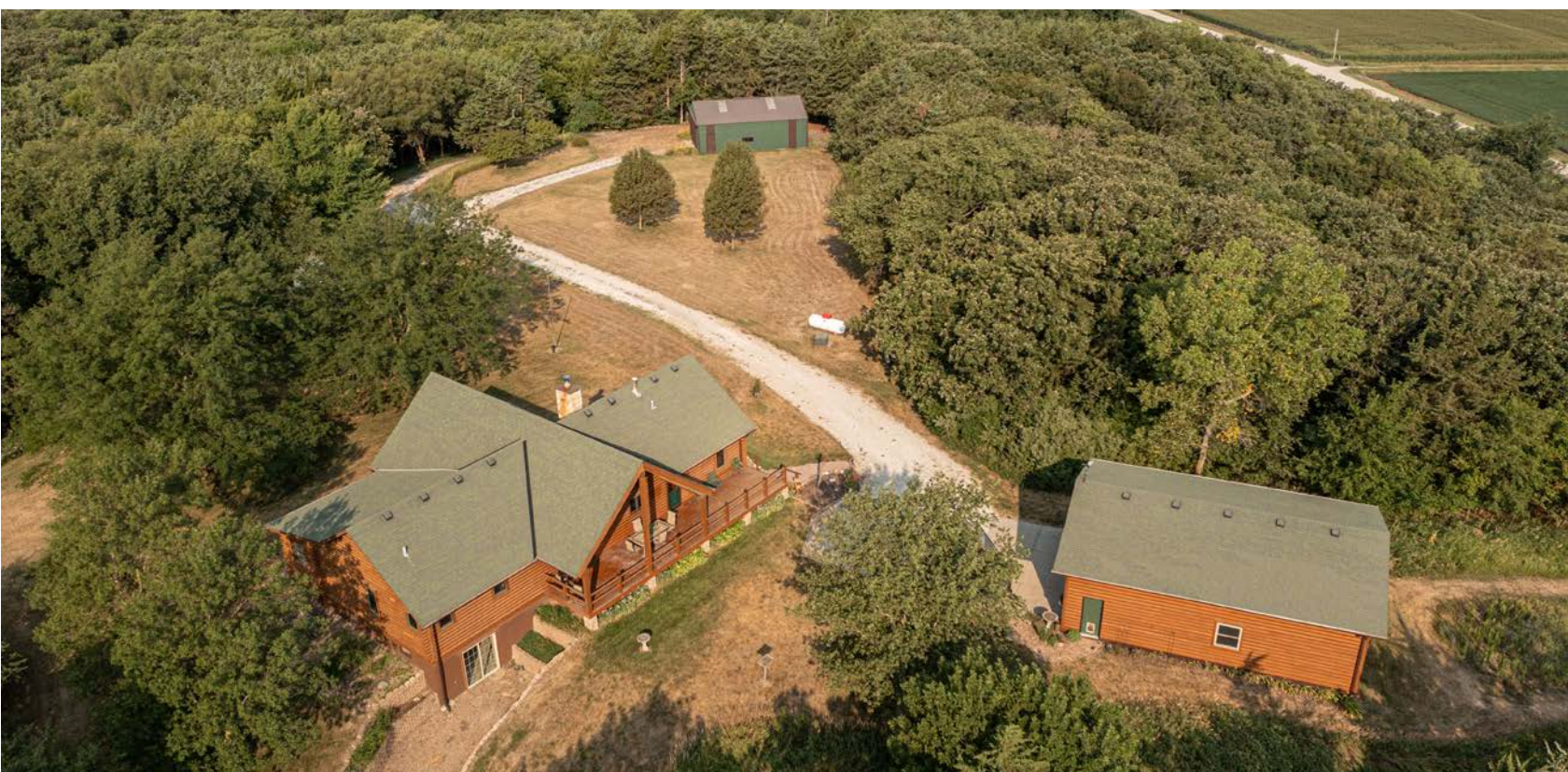


MIDWEST LAND GROUP PRESENTS

35.5 ACRES

# SAUNDERS COUNTY, NE

2665 LINWOOD ROAD, MORSE BLUFF, NEBRASKA, 68648



[MidwestLandGroup.com](http://MidwestLandGroup.com)



MIDWEST LAND GROUP IS HONORED TO PRESENT

# CUSTOM LOG HOME ON 35.5 +/- ACRES IN SAUNDERS COUNTY, NEBRASKA

---

Nestled in the hills overlooking the Platte River bottom sits this secluded and quiet custom log home estate in northern Saunders County, Nebraska. With just over 35 acres, this property is the perfect combination of size, location, and attention to detail. The property consists of rolling hills skirted with mature cedar and hardwood timber and capped with lush native grasses surrounding the home site. Not a neighbor in sight except for the plentiful wildlife that call these bluffs home, including a healthy population of deer and turkeys. Open hilltops and deep ravines make for both perfect habitat and hunting opportunities.

No detail was overlooked when this custom, full-log home was built on one of the highest points on the property. With roughly 3,230 finished square feet and an open floor plan, this 3-bed, 4-bath home has a rustic feel with modern convenience. The updated kitchen boasts granite countertops, tile floors, and all newer appliances. The master suite comes complete with a jet tub and double vanity, as well as a doorway to your own 4-seasons porch. The great room offers vaulted ceilings, huge windows, and a wood-burning

stove for those cold winter evenings. The finished walk-out basement has an additional family room and attached game room, plus ample storage for all your belongings. Outside, enjoy all the views this property has to offer with front and rear covered porches big enough for entertaining. Additionally, at the home site, a massive 30'x40' detached garage, matching the home, offers concrete floors, tall doors, and even taller ceilings for all your vehicles and toys. An additional 30'x40' pole barn was added for even more storage, including a 12'x40' attached lean-to garage currently storing a large supply of cut firewood. 5 acres along Linwood Road are currently being farmed on a corn and soybean rotation for a little added income on the property.

This property sits off just 2 miles of gravel road to the west of Morse Bluff, Nebraska. For the commuter, it's just minutes from North Bend, 20 minutes to Fremont, 30 minutes to Columbus, or 40 minutes to Elkhorn and West Omaha. A unique home on an acreage of this size with so much diversity doesn't come along often! Call today to schedule a private tour!



# PROPERTY FEATURES

PRICE: **\$900,000** | COUNTY: **SAUNDERS** | STATE: **NEBRASKA** | ACRES: **35.5**

---

- 35.5 +/- acres in the Platte River bluffs near Morse Bluff, NE
- Roughly 5 acres of crop ground along Linwood Road
- Mostly consists of secluded hardwood timber and native grasses
- Great habitat and hunting opportunities
- Large population of deer and turkeys in the area
- Custom full-log home with over 3,200 finished square feet
- 3-bed, 4-bath home with open floor plan and finished walk-out basement
- Updated kitchen with tile floors, granite countertops, and newer appliances
- Wood burning stove with large supply of firewood included
- Enclosed 4-season room and large covered front and rear porches
- Matching 30'x40' detached garage with concrete floors and tall doors
- Additional 42'x40' metal building with gravel floor
- New coil and A/C unit in 2019
- 200 amp service to the home and garage
- Only 20 minutes to Fremont, 30 minutes to Columbus, or 40 minutes to Elkhorn





# 35.5 +/- ACRES

---

The property consists of rolling hills skirted with mature cedar and hardwood timber and capped with lush native grasses surrounding the home site.





# CUSTOM FULL-LOG HOME

With roughly 3,230 finished square feet and an open floor plan, this 3-bed, 4-bath home has a rustic feel with modern convenience. The updated kitchen boasts granite countertops, tile floors, and all newer appliances. The great room offers vaulted ceilings, huge windows, and a wood-burning stove for those cold winter evenings.





# 3-BED, 4-BATH HOME





# FINISHED WALK-OUT BASEMENT

---

The finished walk-out basement has an additional family room and attached game room, plus ample storage for all your belongings.



# ENCLOSED 4-SEASON ROOM

---





## MATCHING 30'X40' DETACHED GARAGE

---



## ADDITIONAL 42'X40' METAL BUILDING

---





# OVERVIEW MAP

---





# AERIAL MAP



Maps Provided By:



© AgriData, Inc. 2021 [www.AgriDataInc.com](http://www.AgriDataInc.com)

Map Center: 41° 25' 49.61, -96° 48' 6.32

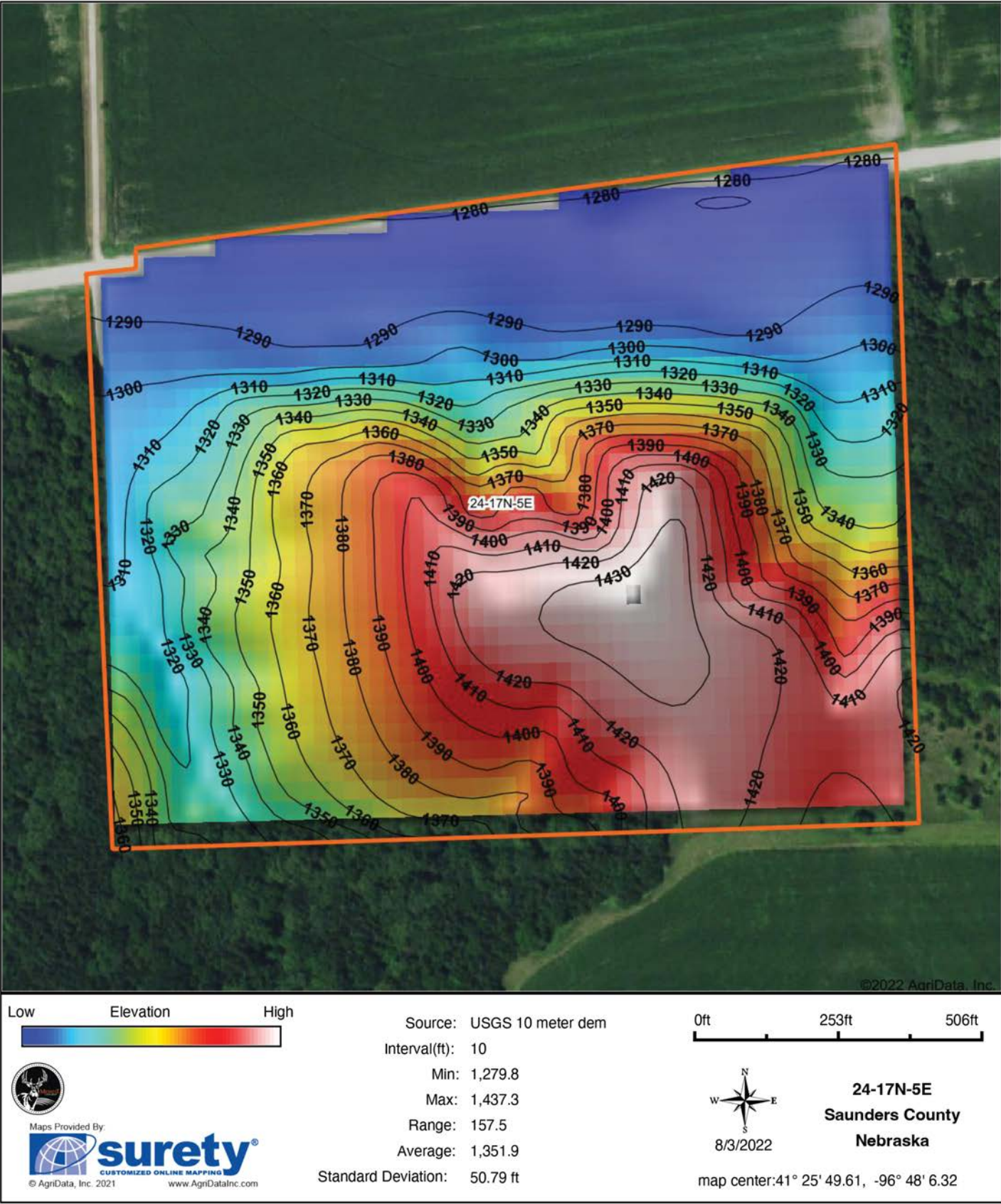
0ft 535ft 1070ft

**24-17N-5E**  
**Saunders County**  
**Nebraska**





# HILLSHADE MAP





# AGENT CONTACT

---

Jake Crnkovich loves the outdoors. From farming and ranching to serious trophy hunting and management practices, Jake's experiences have set him up to be a model land agent. His outdoor career started by managing the Archery and Hunting Shop at Scheels. From there, he took a sales position with an outdoor and ag equipment company before finally becoming a land agent. At Midwest Land Group, Jake is able to bring his knowledge and passion for the outdoors to the very people who seek it. Raised in Ashland, between Omaha and Lincoln on the Platte River, Jake went to Ashland-Greenwood High School and the University of Nebraska at Lincoln. Today, he lives in Ashland with his wife, Nicole, their two daughters, Mackenna and Natallie, and three dogs.

When not building selling land, Jake enjoys spending time bowhunting, waterfowl hunting, competing in archery and bowfishing tournaments, fishing, airboating, dog training, camping, and enjoying sports with his family. A member of Ducks Unlimited, Bowfishers of Nebraska, Bowfishing Association of America, Nebraska Bowhunters Association, and the Sportsman's Alliance, Jake is an expert at precision bow tuning (from setup to shooter training) and excels at dissecting properties to find the best usage for the different seasons. With his diverse background in sales and customer service, Jake is able to quickly relate and cater to anyone who shares his passion for the outdoors. If this sounds like you, be sure to give Jake a call.



**JAKE CRNKOVICH,**

LAND AGENT

**402.670.0504**

JCrnkovich@MidwestLandGroup.com



## MidwestLandGroup.com

This property is being offered by Midwest Land Group, LLC. 913.674.8010. All information provided by Midwest Land Group, LLC or their agents was acquired from sources deemed accurate and reliable, however we do not warrant its accuracy or completeness. Midwest Land Group, LLC assumes no liability for error, omission or investment results. Midwest Land Group, LLC. Licensed in Arkansas, Illinois, Iowa, Kansas, Missouri, Nebraska, Oklahoma, South Dakota, and Wisconsin.