

MIDWEST LAND GROUP PRESENTS

344 ACRES IN

PUSHMATAHA COUNTY OKLAHOMA



MidwestLandGroup.com

MIDWEST LAND GROUP IS HONORED TO PRESENT

RARE, PROVEN DEER HUNTING TRACT IN THE DEER CAPITAL OF THE WORLD

Incredible deer hunting property in Pushmataha County, Oklahoma! Seven natural shooting lanes run longitudinally across the length of the tract formed by alternating timber and pasture streaks. Large turnpike ponds in the north, smaller ponds in the remainder. Deer pics are verifiable and available including a very nice mainframe 10 taken last year. Same family ownership for 70 years, not leased

but hunted periodically by friends of the family so the pressure has been minimal. Properties with this pedigree do not come along frequently. Timber and pasture lenses as well as plentiful water provide everything to attract, grow, and retain deer. The property is fenced. Great access to Tulsa or Dallas/Fort Worth via the turnpike (2 to 2-1/2 hrs)..... don't miss this one!



PROPERTY FEATURES

PRICE: **\$995,880** | COUNTY: **PUSHMATAHA** | STATE: **OKLAHOMA** | ACRES: **344**

- Deer
- Hunting
- Shooting lanes
- Big water
- Quick access to Tulsa
- Quick access to Dallas/FtWorth Metroplex



344 +/- ACRES



BIG WATER



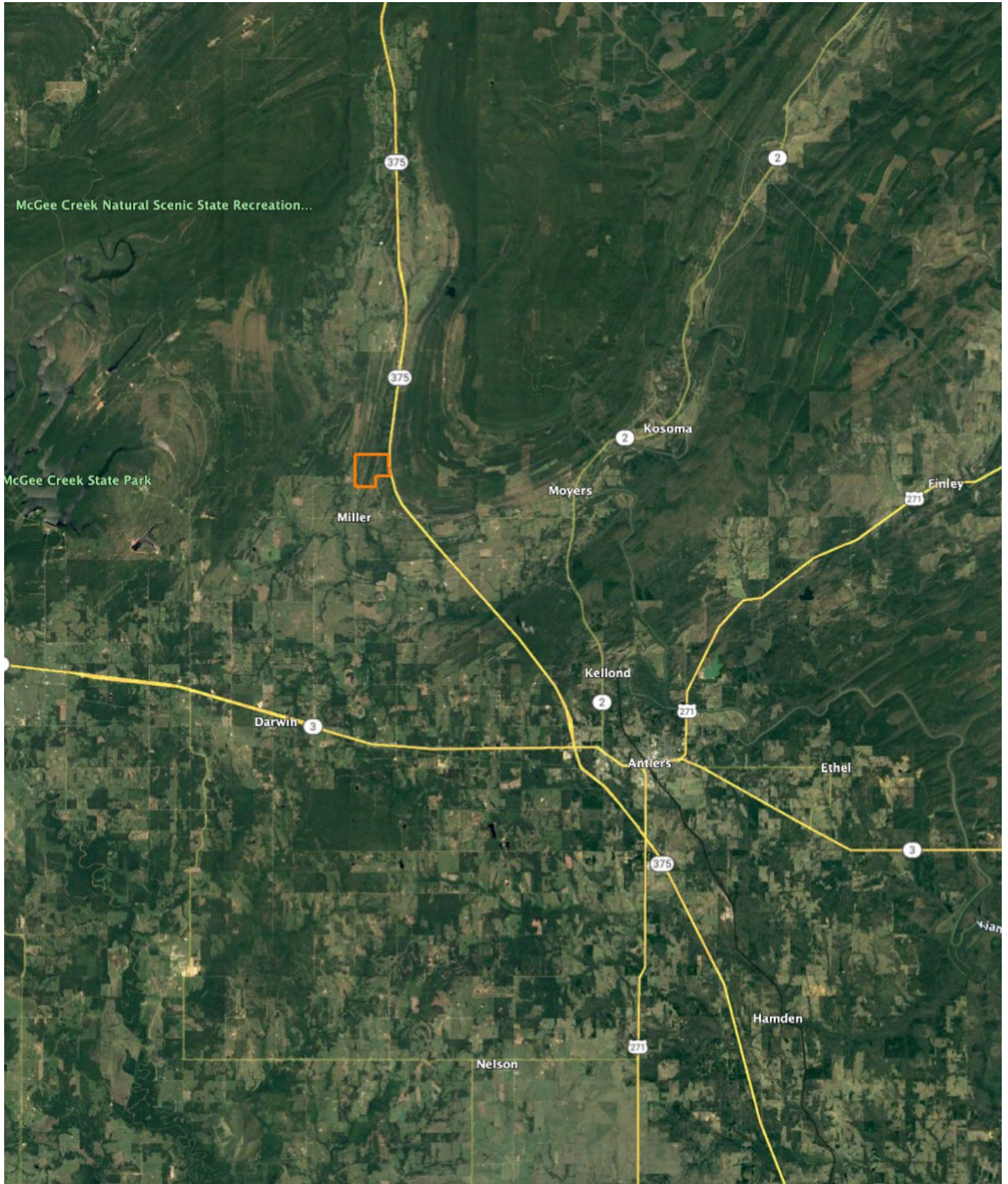
HUNTING



DEER PHOTOS



OVERVIEW MAP



AGENT CONTACT

Don Eubank understands the hard work, challenges, and rewards that come with land ownership. Raised in Santa Anna, Texas, Don grew up working on the family ranch and dairy farm. His father was a real estate broker specializing in rural properties so, from a young age, Don learned the value of land ownership, the principles of land stewardship, and the strong bond that exists between land and its owners.

After obtaining a degree in Geology from Abilene Christian University and a degree in Petroleum Engineering from Texas A&M University, Don spent over 30 years in the oil and gas industry working across U.S. producing basins and internationally. Although initially involved in engineering, most of his subsequent career was spent managing oil and gas operations in a role that allowed him to build relationships with landowners on which the company had oil and gas operations. This experience understanding and addressing landowners' concerns is a skill that Don draws on and puts to work every day at Midwest Land Group.

A true outdoorsman, Don developed a passion for hunting and firearms at a very young age, with some of his fondest memories being associated with dove, quail, and turkey hunting in and around the family's property. Today, his hobbies include bird hunting, sporting clays, and buying, restoring, and selling firearms. Don and his wife Dena reside in Broken Arrow, Oklahoma.



DON EUBANK,

LAND AGENT

918.205.3025

DEubank@MidwestLandGroup.com



MidwestLandGroup.com

This property is being offered by Midwest Land Group, LLC. 913.674.8010. All information provided by Midwest Land Group, LLC or their agents was acquired from sources deemed accurate and reliable, however we do not warrant its accuracy or completeness. Midwest Land Group, LLC assumes no liability for error, omission or investment results. Midwest Land Group, LLC. Licensed in Arkansas, Illinois, Iowa, Kansas, Missouri, Nebraska, Oklahoma, South Dakota, and Wisconsin.