



Buyers, Sellers & Land Connected

4 ACRES - STONE COUNTY, MO



PRICE: \$179,000

ACRES: 4

COUNTY: STONE

STATE: MISSOURI

For more information contact:

CLAYTON CAMPBELL, Land Agent

620.808.3085

CCampbell@MidwestLandGroup.com

MidwestLandGroup.com



CLAYTON CAMPBELL, Land Agent

620.808.3085 | CCampbell@MidwestLandGroup.com | www.MidwestLandGroup.com

This property is being offered by Midwest Land Group, LLC. 913.674.8010. All information provided by Midwest Land Group, LLC. or their agents was acquired from sources deemed accurate and reliable, however we do not warrant its accuracy or completeness, Midwest Land Group, LLC assumes no liability for error, omission, or investment results. Midwest Land Group, LLC. Bryhn Craft and Steve Mott, Brokers. Licensed in Arkansas, Illinois, Iowa, Kansas, Missouri, Nebraska, Oklahoma, South Dakota, and Wisconsin.



Buyers, Sellers & Land Connected

4 ACRES - STONE COUNTY, MO



4 Acre Build Site on Highway Business 13 Between Branson West and Kimberling City

Located on Business 13 south of Branson West sits a 4 acre build spot perfect for an investment or future business headquarters. Frontage on Business 13 is the perfect place between Branson West and Kimberling City to get exposure for your future adventure. With blacktop access and utilities close, this would be a build-to-suit situation. If you are interested in this investment tract, please call Clayton Campbell (620) 687-2789 for a private tour of this property.

- Consists of 4 +- acres in Stone County near Branson West, MO
- Great location to build a storefront
- Blacktop access from Business 13
- Possible billboard location on Highway 13
- Within 5 min of Branson West and Kimberling City MO
- Across the street from Copper Run Distillery



CLAYTON CAMPBELL, Land Agent

620.808.3085 | CCampbell@MidwestLandGroup.com | www.MidwestLandGroup.com

This property is being offered by Midwest Land Group, LLC. 913.674.8010. All information provided by Midwest Land Group, LLC. or their agents was acquired from sources deemed accurate and reliable, however we do not warrant its accuracy or completeness, Midwest Land Group, LLC assumes no liability for error, omission, or investment results. Midwest Land Group, LLC. Bryn Craft and Steve Mott, Brokers. Licensed in Arkansas, Illinois, Iowa, Kansas, Missouri, Nebraska, Oklahoma, South Dakota, and Wisconsin.



Buyers, Sellers & Land Connected

4 ACRES - STONE COUNTY, MO



CLAYTON CAMPBELL, Land Agent

620.808.3085 | CCampbell@MidwestLandGroup.com | www.MidwestLandGroup.com

This property is being offered by Midwest Land Group, LLC. 913.674.8010. All information provided by Midwest Land Group, LLC. or their agents was acquired from sources deemed accurate and reliable, however we do not warrant its accuracy or completeness, Midwest Land Group, LLC assumes no liability for error, omission, or investment results. Midwest Land Group, LLC. Bryn Craft and Steve Mott, Brokers. Licensed in Arkansas, Illinois, Iowa, Kansas, Missouri, Nebraska, Oklahoma, South Dakota, and Wisconsin.



Buyers, Sellers & Land Connected

4 ACRES - STONE COUNTY, MO

Aerial Map



©2022 AgriData, Inc.



Maps Provided By:



© AgriData, Inc. 2021 www.AgriDataInc.com

Map Center: 36° 40' 2.83, -93° 24' 46.54

0ft 174ft 347ft

27-23N-23W
Stone County
Missouri



5/19/2022

CLAYTON CAMPBELL, Land Agent

620.808.3085 | CCampbell@MidwestLandGroup.com | www.MidwestLandGroup.com

This property is being offered by Midwest Land Group, LLC. 913.674.8010. All information provided by Midwest Land Group, LLC. or their agents was acquired from sources deemed accurate and reliable, however we do not warrant its accuracy or completeness, Midwest Land Group, LLC. assumes no liability for error, omission, or investment results. Midwest Land Group, LLC. Bryn Craft and Steve Mott, Brokers. Licensed in Arkansas, Illinois, Iowa, Kansas, Missouri, Nebraska, Oklahoma, South Dakota, and Wisconsin.



Buyers, Sellers & Land Connected

4 ACRES - STONE COUNTY, MO

Topography Contours



©2022 AgriData, Inc.



Maps Provided By:
surety
CUSTOMIZED ONLINE MAPPING
© AgriData, Inc. 2021 www.AgriDataInc.com

Source: USGS 3 meter dem
Interval(ft): 10.0
Min: 1,284.7
Max: 1,362.0
Range: 77.3
Average: 1,327.9
Standard Deviation: 20.14 ft

0ft 181ft 363ft



5/19/2022

27-23N-23W
Stone County
Missouri

Map Center: 36° 40' 2.83, -93° 24' 46.54

CLAYTON CAMPBELL, Land Agent

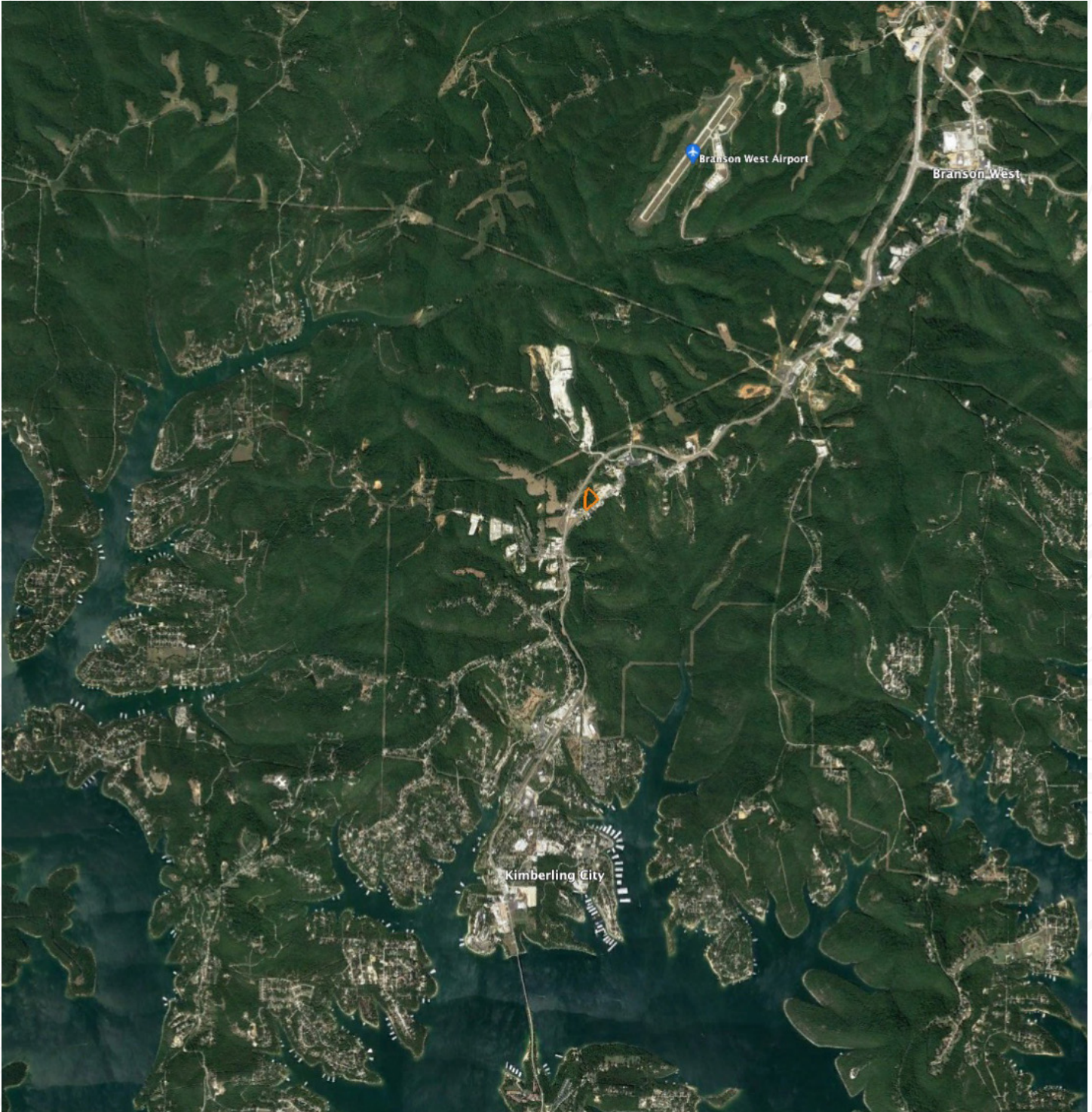
620.808.3085 | CCampbell@MidwestLandGroup.com | www.MidwestLandGroup.com

This property is being offered by Midwest Land Group, LLC. 913.674.8010. All information provided by Midwest Land Group, LLC. or their agents was acquired from sources deemed accurate and reliable, however we do not warrant its accuracy or completeness, Midwest Land Group, LLC assumes no liability for error, omission, or investment results. Midwest Land Group, LLC. Bryhn Craft and Steve Mott, Brokers. Licensed in Arkansas, Illinois, Iowa, Kansas, Missouri, Nebraska, Oklahoma, South Dakota, and Wisconsin.



Buyers, Sellers & Land Connected

4 ACRES - STONE COUNTY, MO



CLAYTON CAMPBELL, Land Agent

620.808.3085 | CCampbell@MidwestLandGroup.com | www.MidwestLandGroup.com

This property is being offered by Midwest Land Group, LLC. 913.674.8010. All information provided by Midwest Land Group, LLC. or their agents was acquired from sources deemed accurate and reliable, however we do not warrant its accuracy or completeness, Midwest Land Group, LLC assumes no liability for error, omission, or investment results. Midwest Land Group, LLC. Bryhn Craft and Steve Mott, Brokers. Licensed in Arkansas, Illinois, Iowa, Kansas, Missouri, Nebraska, Oklahoma, South Dakota, and Wisconsin.