



Buyers, Sellers & Land Connected

0.5 ACRES - RIPLEY COUNTY, MO



PRICE: \$55,900

ACRES: 0.5

COUNTY: RIPLEY

STATE: MISSOURI

For more information contact:
KAREN CASTLEBERRY, Land Broker

208.691.2773
KCastleberry@MidwestLandGroup.com
MidwestLandGroup.com



KAREN CASTLEBERRY, Land Broker

208.691.2773 | KCastleberry@MidwestLandGroup.com | www.MidwestLandGroup.com

This property is being offered by Midwest Land Group, LLC. 913.674.8010. All information provided by Midwest Land Group, LLC. or their agents was acquired from sources deemed accurate and reliable, however we do not warrant its accuracy or completeness, Midwest Land Group, LLC assumes no liability for error, omission, or investment results. Midwest Land Group, LLC. Bryn Craft and Steve Mott, Brokers. Licensed in Arkansas, Illinois, Iowa, Kansas, Missouri, Nebraska, Oklahoma, South Dakota, and Wisconsin.



Buyers, Sellers & Land Connected

0.5 ACRES - RIPLEY COUNTY, MO



Adorable Home on Quiet Street

Very cute home on a quiet street in Doniphan, Missouri. If you are looking for a great investment, there is a high demand for rental homes in Doniphan right now. This sweet little home has new carpet, new vinyl flooring and new paint throughout. There are 2 bedrooms and 1 bathroom in this quaint little home and a bonus storage/utility room off of the back of the kitchen. Spend the warm summer evenings sitting outside in your chain link fenced yard and watch the kids swinging and playing on the tire swing. Beautiful large trees to make great shade. There is a lot of opportunity here to use as a rental or your own personal residence. Don't forget the nice portable carport to cover your vehicles. If you would like a personal tour, call Karen Castleberry at 208-691-2773 today.

- New paint
- New carpet
- New vinyl flooring
- Ceiling fans
- Carport

- Chain link fence
- Large backyard
- Shade trees
- Quiet neighborhood

KAREN CASTLEBERRY, Land Broker

208.691.2773 | KCastleberry@MidwestLandGroup.com | www.MidwestLandGroup.com

This property is being offered by Midwest Land Group, LLC. 913.674.8010. All information provided by Midwest Land Group, LLC. or their agents was acquired from sources deemed accurate and reliable, however we do not warrant its accuracy or completeness, Midwest Land Group, LLC assumes no liability for error, omission, or investment results. Midwest Land Group, LLC. Bryhn Craft and Steve Mott, Brokers. Licensed in Arkansas, Illinois, Iowa, Kansas, Missouri, Nebraska, Oklahoma, South Dakota, and Wisconsin.



Buyers, Sellers & Land Connected

0.5 ACRES - RIPLEY COUNTY, MO



KAREN CASTLEBERRY, Land Broker

208.691.2773 | KCastleberry@MidwestLandGroup.com | www.MidwestLandGroup.com

This property is being offered by Midwest Land Group, LLC. 913.674.8010. All information provided by Midwest Land Group, LLC. or their agents was acquired from sources deemed accurate and reliable, however we do not warrant its accuracy or completeness, Midwest Land Group, LLC assumes no liability for error, omission, or investment results. Midwest Land Group, LLC. Bryhn Craft and Steve Mott, Brokers. Licensed in Arkansas, Illinois, Iowa, Kansas, Missouri, Nebraska, Oklahoma, South Dakota, and Wisconsin.



Buyers, Sellers & Land Connected

0.5 ACRES - RIPLEY COUNTY, MO



KAREN CASTLEBERRY, Land Broker

208.691.2773 | KCastleberry@MidwestLandGroup.com | www.MidwestLandGroup.com

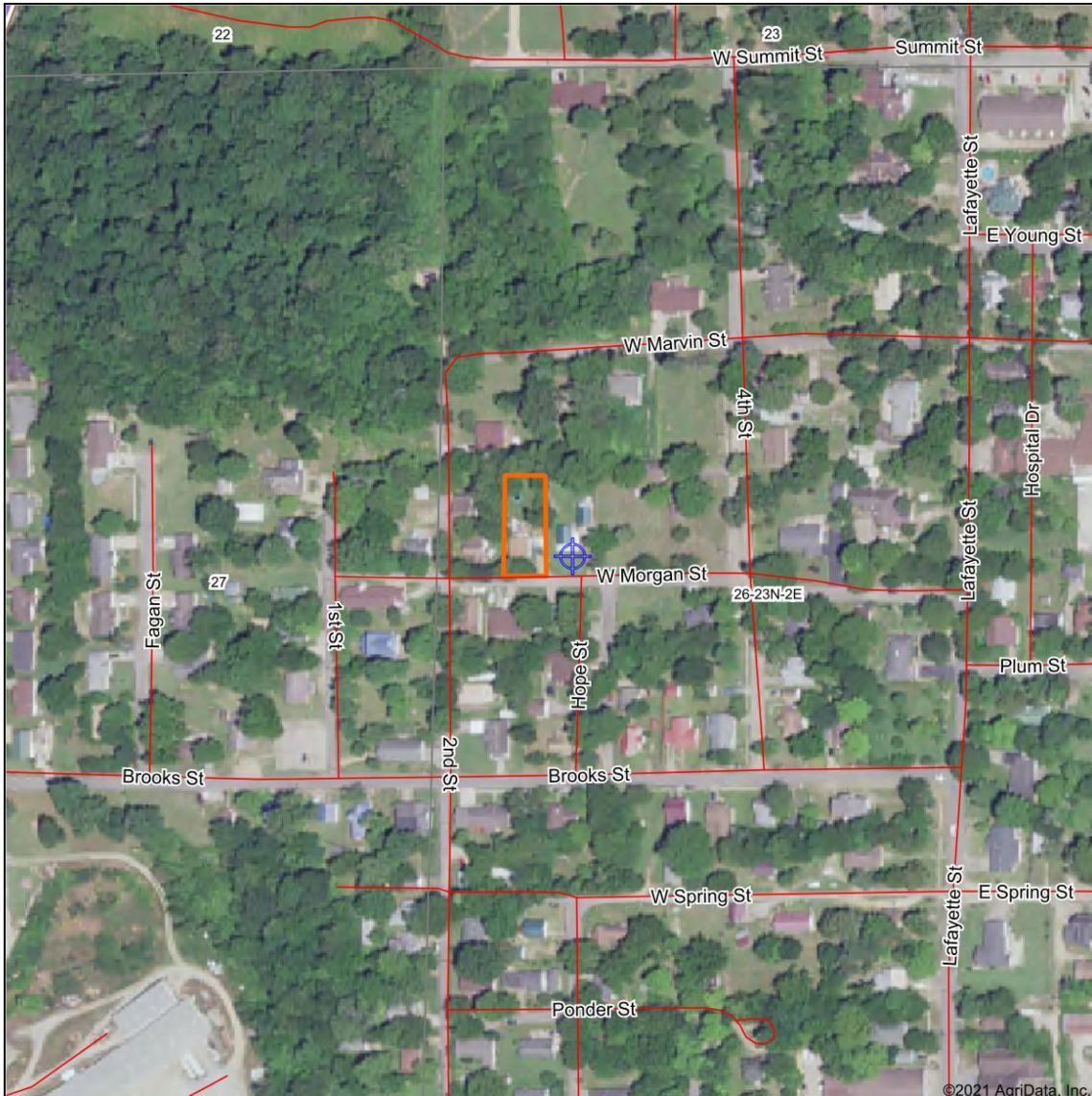
This property is being offered by Midwest Land Group, LLC. 913.674.8010. All information provided by Midwest Land Group, LLC. or their agents was acquired from sources deemed accurate and reliable, however we do not warrant its accuracy or completeness, Midwest Land Group, LLC assumes no liability for error, omission, or investment results. Midwest Land Group, LLC. Bryhn Craft and Steve Mott, Brokers. Licensed in Arkansas, Illinois, Iowa, Kansas, Missouri, Nebraska, Oklahoma, South Dakota, and Wisconsin.



Buyers, Sellers & Land Connected

0.5 ACRES - RIPLEY COUNTY, MO

Aerial Map



©2021 AgriData, Inc.



Maps Provided By
surety
CUSTOMIZED ONLINE MAPPING
© AgriData, Inc. 2021 www.AgriDataInc.com

Map Center: 36° 37' 16.97, -90° 49' 45.93

0ft 250ft 500ft

26-23N-2E
Ripley County
Missouri



KAREN CASTLEBERRY, Land Broker

208.691.2773 | KCastleberry@MidwestLandGroup.com | www.MidwestLandGroup.com

This property is being offered by Midwest Land Group, LLC. 913.674.8010. All information provided by Midwest Land Group, LLC. or their agents was acquired from sources deemed accurate and reliable, however we do not warrant its accuracy or completeness, Midwest Land Group, LLC. assumes no liability for error, omission, or investment results. Midwest Land Group, LLC. Bryn Craft and Steve Mott, Brokers. Licensed in Arkansas, Illinois, Iowa, Kansas, Missouri, Nebraska, Oklahoma, South Dakota, and Wisconsin.