



Buyers, Sellers & Land Connected

0.5 ACRES - RIPLEY, MO



PRICE: \$55,900

ACRES: .5

COUNTY: RIPLEY

STATE: MISSOURI

For more information contact:  
KAREN CASTLEBERRY, Land Broker

208.691.2773  
KCastleberry@MidwestLandGroup.com  
MidwestLandGroup.com



**KAREN CASTLEBERRY**, Land Broker

208.691.2773 | KCastleberry@MidwestLandGroup.com | [www.MidwestLandGroup.com](http://www.MidwestLandGroup.com)

This property is being offered by Midwest Land Group, LLC. 913.674.8010. All information provided by Midwest Land Group, LLC. or their agents was acquired from sources deemed accurate and reliable, however we do not warrant its accuracy or completeness, Midwest Land Group, LLC assumes no liability for error, omission, or investment results. Midwest Land Group, LLC. Bryn Craft and Steve Mott, Brokers. Licensed in Arkansas, Illinois, Iowa, Kansas, Missouri, Nebraska, Oklahoma, South Dakota, and Wisconsin.





Buyers, Sellers & Land Connected

0.5 ACRES - RIPLEY, MO



## Nice Home in Town

Nice home located on Walnut street in Doniphan, Missouri. This home has 3 bedrooms and 1 bathroom along with a large living area. This home sits close to businesses in town; so taking a nice stroll to get some groceries would be easy. Located on a very nice, well maintained lot, there is also a great fenced-in area for pets or a nice place to garden or grow some beautiful flowers. This home is just a few blocks from the Doniphan R-1 school district. Sitting just behind the home is a convenient one car detached garage with added storage. This home is currently a rental and has a long time tenant in place. Turn key investment opportunity right here. Call Karen Castleberry today for a tour 208-691-2773.

- 3 Bedrooms
- 1 Bathroom
- Covered front porch
- Sidewalk
- Fenced yard
- Detached garage
- Close to schools
- Tenant in place
- Well kept yard
- Storage attached to garage
- Close to businesses

**KAREN CASTLEBERRY**, Land Broker

208.691.2773 | [KCastleberry@MidwestLandGroup.com](mailto:KCastleberry@MidwestLandGroup.com) | [www.MidwestLandGroup.com](http://www.MidwestLandGroup.com)

This property is being offered by Midwest Land Group, LLC. 913.674.8010. All information provided by Midwest Land Group, LLC. or their agents was acquired from sources deemed accurate and reliable, however we do not warrant its accuracy or completeness, Midwest Land Group, LLC assumes no liability for error, omission, or investment results. Midwest Land Group, LLC. Bryn Craft and Steve Mott, Brokers. Licensed in Arkansas, Illinois, Iowa, Kansas, Missouri, Nebraska, Oklahoma, South Dakota, and Wisconsin.





Buyers, Sellers & Land Connected

0.5 ACRES - RIPLEY, MO



**KAREN CASTLEBERRY**, Land Broker

208.691.2773 | [KCastleberry@MidwestLandGroup.com](mailto:KCastleberry@MidwestLandGroup.com) | [www.MidwestLandGroup.com](http://www.MidwestLandGroup.com)

This property is being offered by Midwest Land Group, LLC. 913.674.8010. All information provided by Midwest Land Group, LLC. or their agents was acquired from sources deemed accurate and reliable, however we do not warrant its accuracy or completeness, Midwest Land Group, LLC. assumes no liability for error, omission, or investment results. Midwest Land Group, LLC. Bryn Craft and Steve Mott, Brokers. Licensed in Arkansas, Illinois, Iowa, Kansas, Missouri, Nebraska, Oklahoma, South Dakota, and Wisconsin.





Buyers, Sellers & Land Connected

0.5 ACRES - RIPLEY, MO



**KAREN CASTLEBERRY**, Land Broker

208.691.2773 | [KCastleberry@MidwestLandGroup.com](mailto:KCastleberry@MidwestLandGroup.com) | [www.MidwestLandGroup.com](http://www.MidwestLandGroup.com)

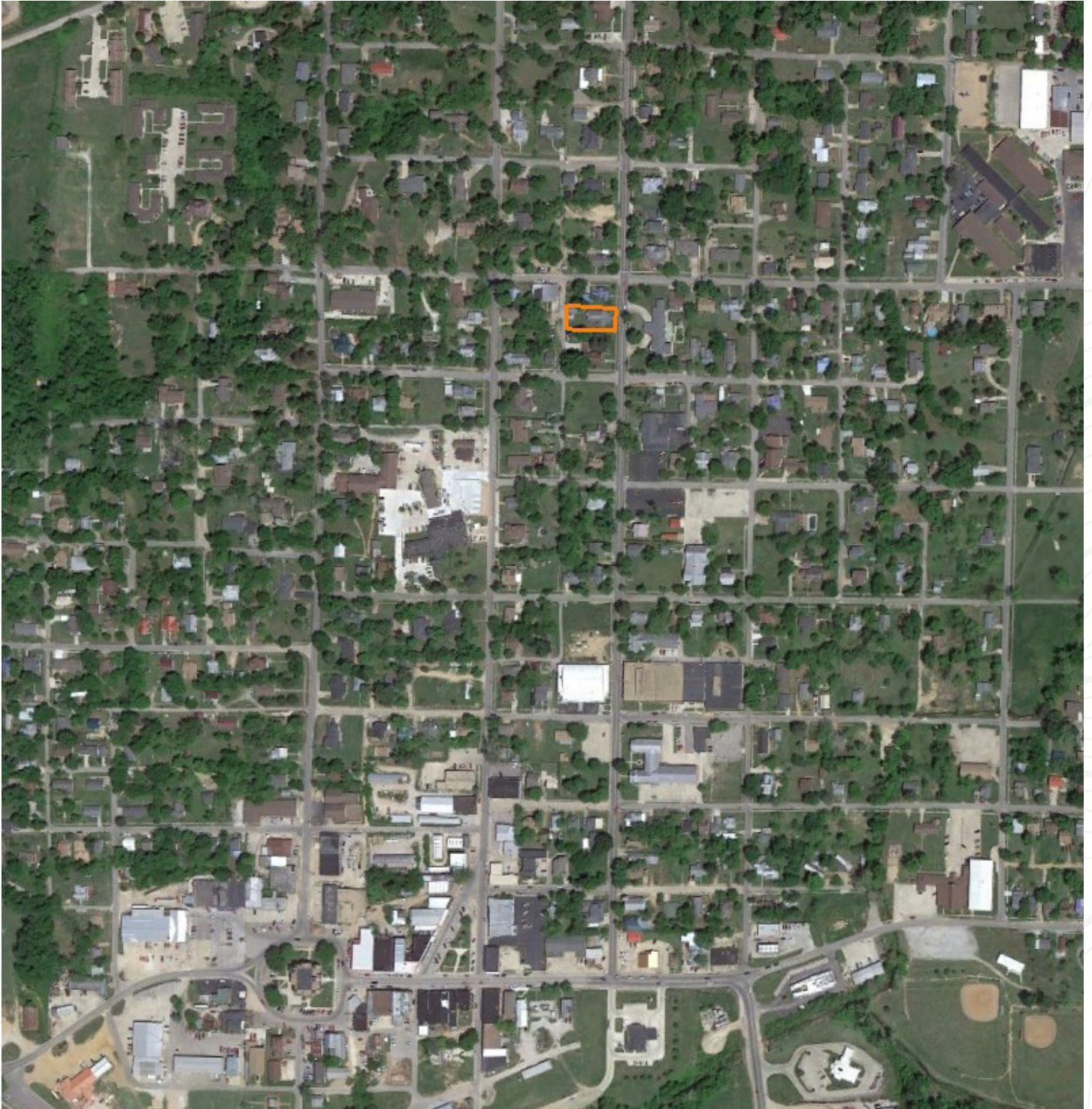
This property is being offered by Midwest Land Group, LLC. 913.674.8010. All information provided by Midwest Land Group, LLC. or their agents was acquired from sources deemed accurate and reliable, however we do not warrant its accuracy or completeness, Midwest Land Group, LLC assumes no liability for error, omission, or investment results. Midwest Land Group, LLC. Bryn Craft and Steve Mott, Brokers. Licensed in Arkansas, Illinois, Iowa, Kansas, Missouri, Nebraska, Oklahoma, South Dakota, and Wisconsin.





Buyers, Sellers & Land Connected

0.5 ACRES - RIPLEY, MO



**KAREN CASTLEBERRY**, Land Broker

208.691.2773 | [KCastleberry@MidwestLandGroup.com](mailto:KCastleberry@MidwestLandGroup.com) | [www.MidwestLandGroup.com](http://www.MidwestLandGroup.com)

This property is being offered by Midwest Land Group, LLC. 913.674.8010. All information provided by Midwest Land Group, LLC. or their agents was acquired from sources deemed accurate and reliable, however we do not warrant its accuracy or completeness, Midwest Land Group, LLC assumes no liability for error, omission, or investment results. Midwest Land Group, LLC. Bryn Craft and Steve Mott, Brokers. Licensed in Arkansas, Illinois, Iowa, Kansas, Missouri, Nebraska, Oklahoma, South Dakota, and Wisconsin.

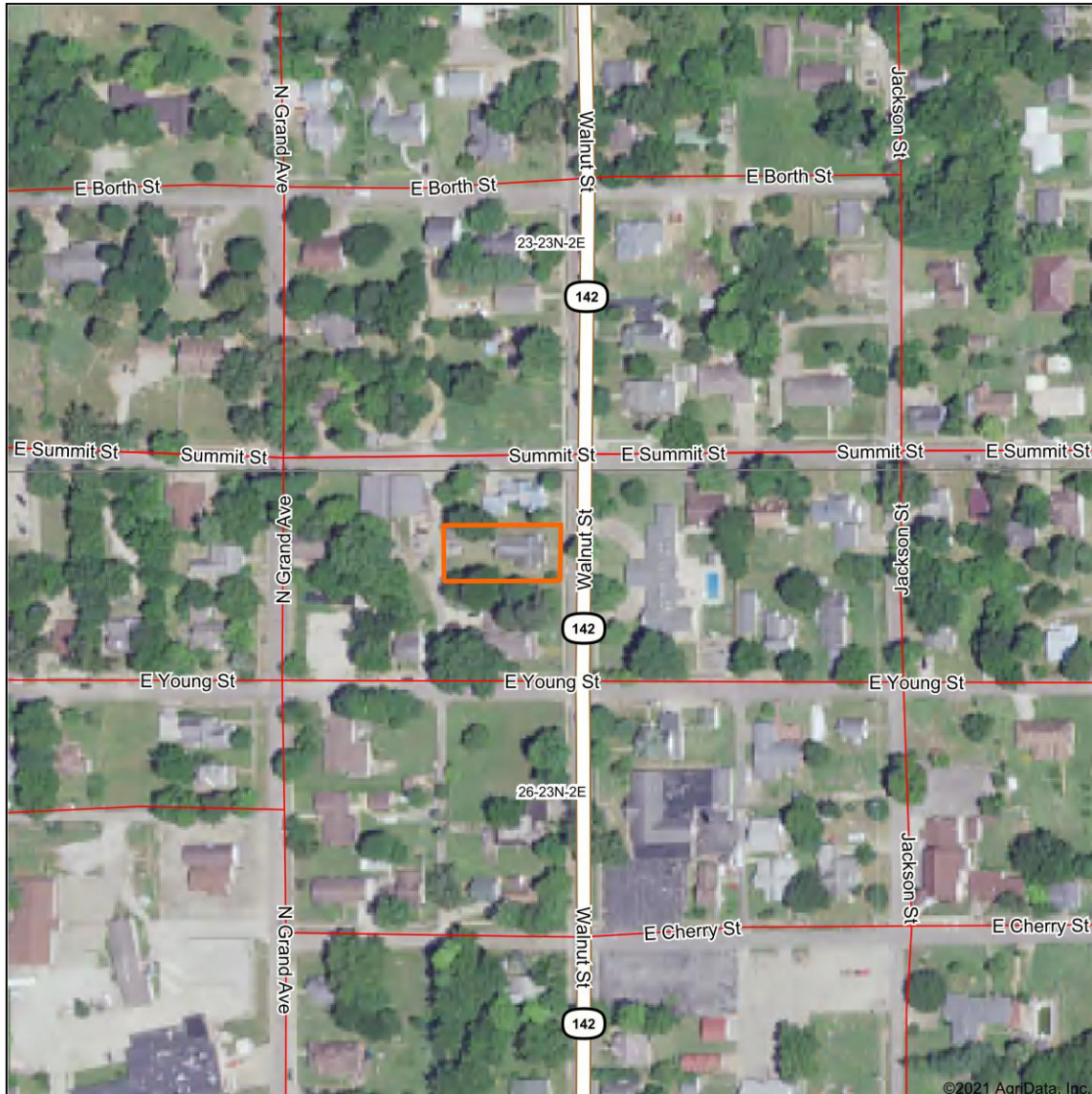




Buyers, Sellers & Land Connected

# 0.5 ACRES - RIPLEY, MO

## Aerial Map



©2021 AgriData, Inc.



Maps Provided By  
**surety**  
CUSTOMIZED ONLINE MAPPING  
© AgriData, Inc. 2021 www.AgriDataInc.com

Map Center: 36° 37' 23.28, -90° 49' 26.81

0ft 201ft 402ft

**26-23N-2E**  
**Ripley County**  
**Missouri**



**KAREN CASTLEBERRY**, Land Broker

208.691.2773 | KCastleberry@MidwestLandGroup.com | [www.MidwestLandGroup.com](http://www.MidwestLandGroup.com)

This property is being offered by Midwest Land Group, LLC. 913.674.8010. All information provided by Midwest Land Group, LLC. or their agents was acquired from sources deemed accurate and reliable, however we do not warrant its accuracy or completeness, Midwest Land Group, LLC. assumes no liability for error, omission, or investment results. Midwest Land Group, LLC. Bryn Craft and Steve Mott, Brokers. Licensed in Arkansas, Illinois, Iowa, Kansas, Missouri, Nebraska, Oklahoma, South Dakota, and Wisconsin.